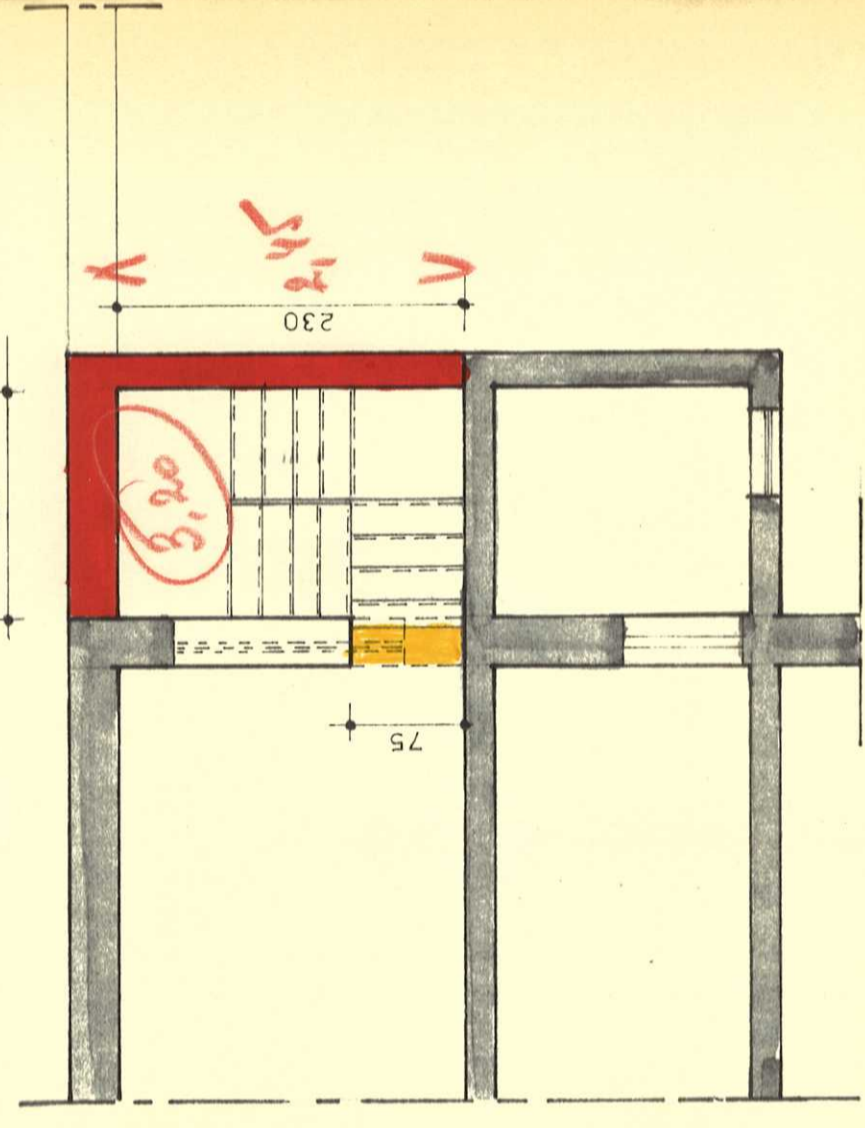
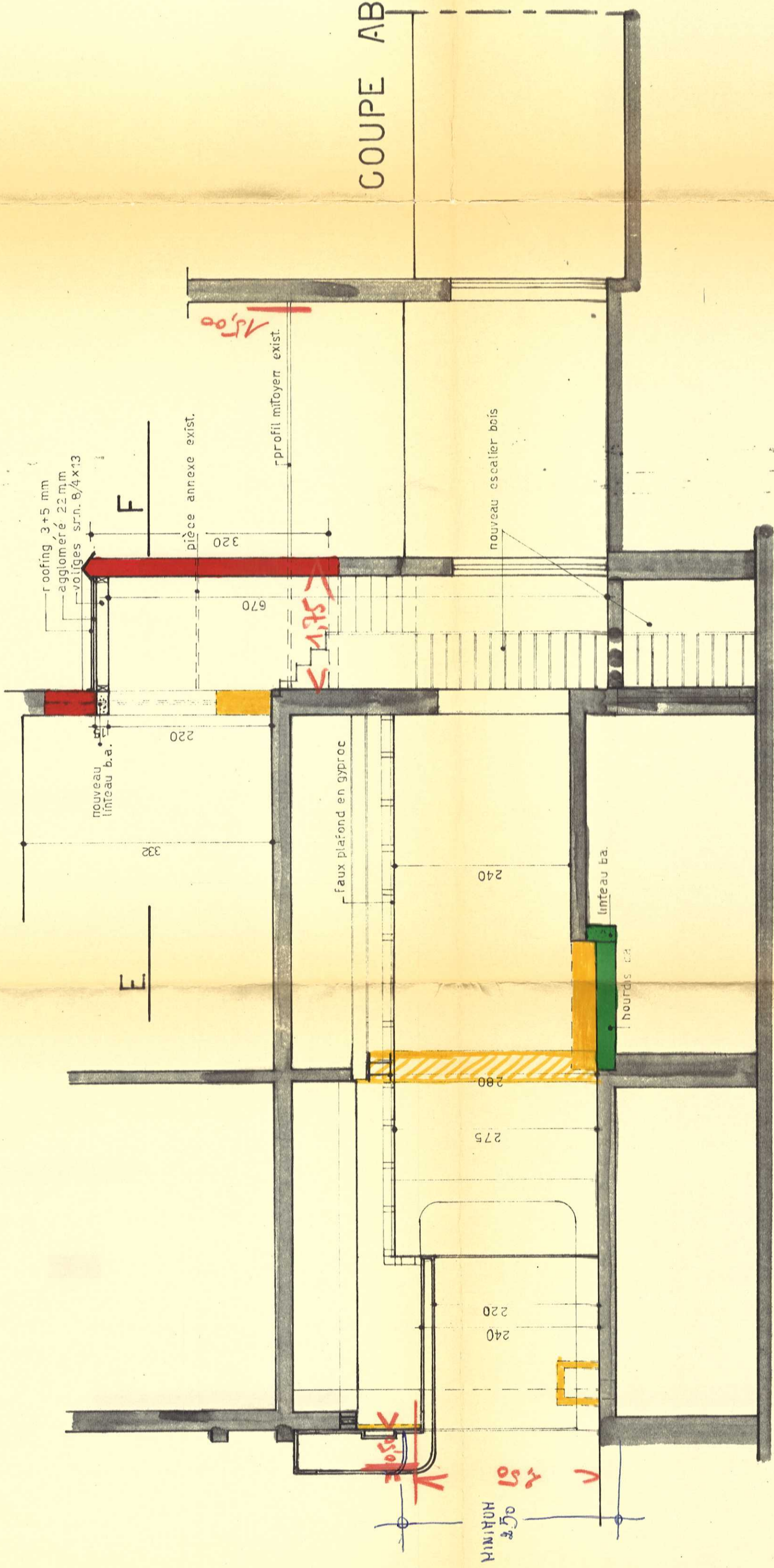


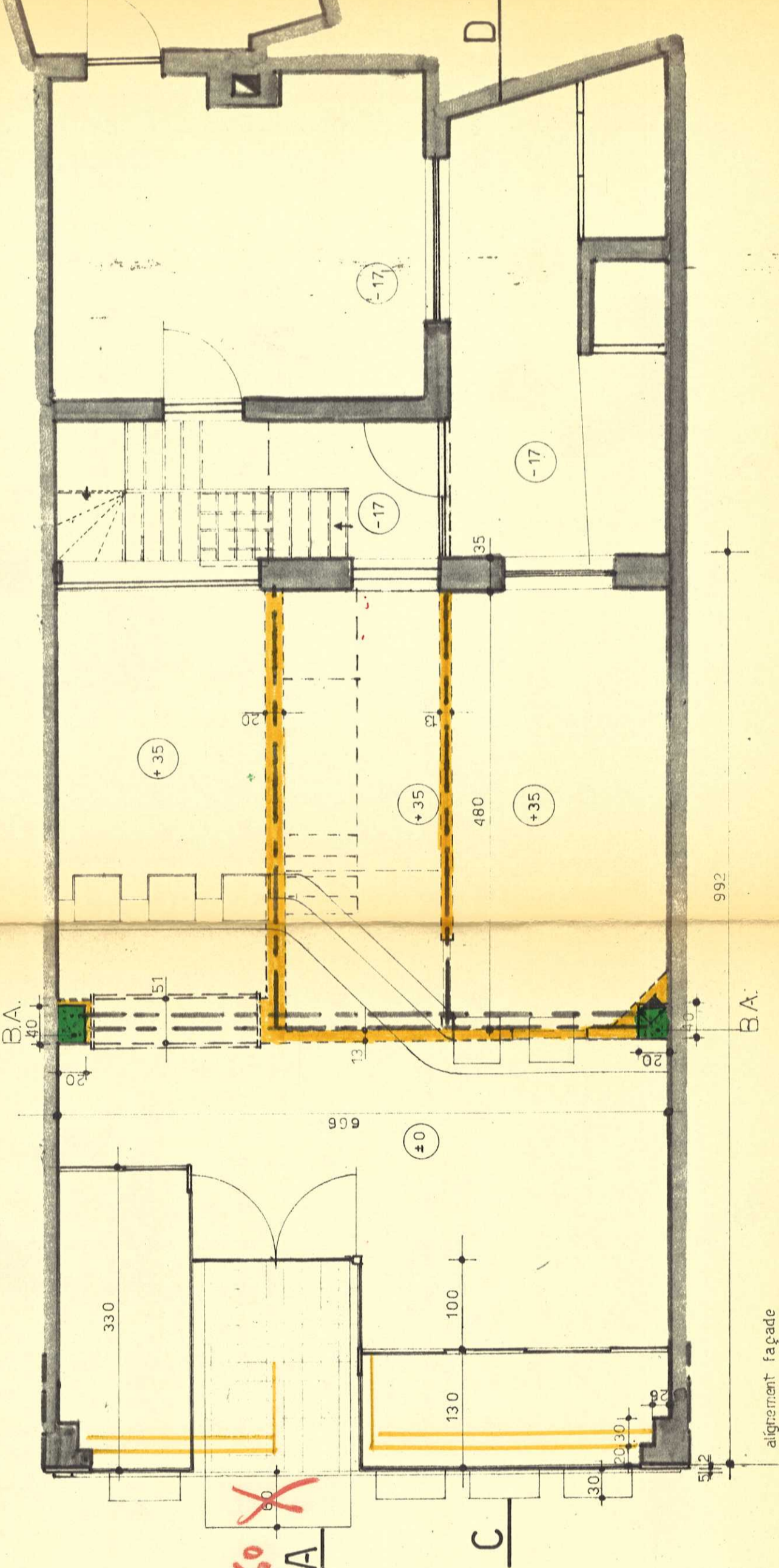
COUPE CD



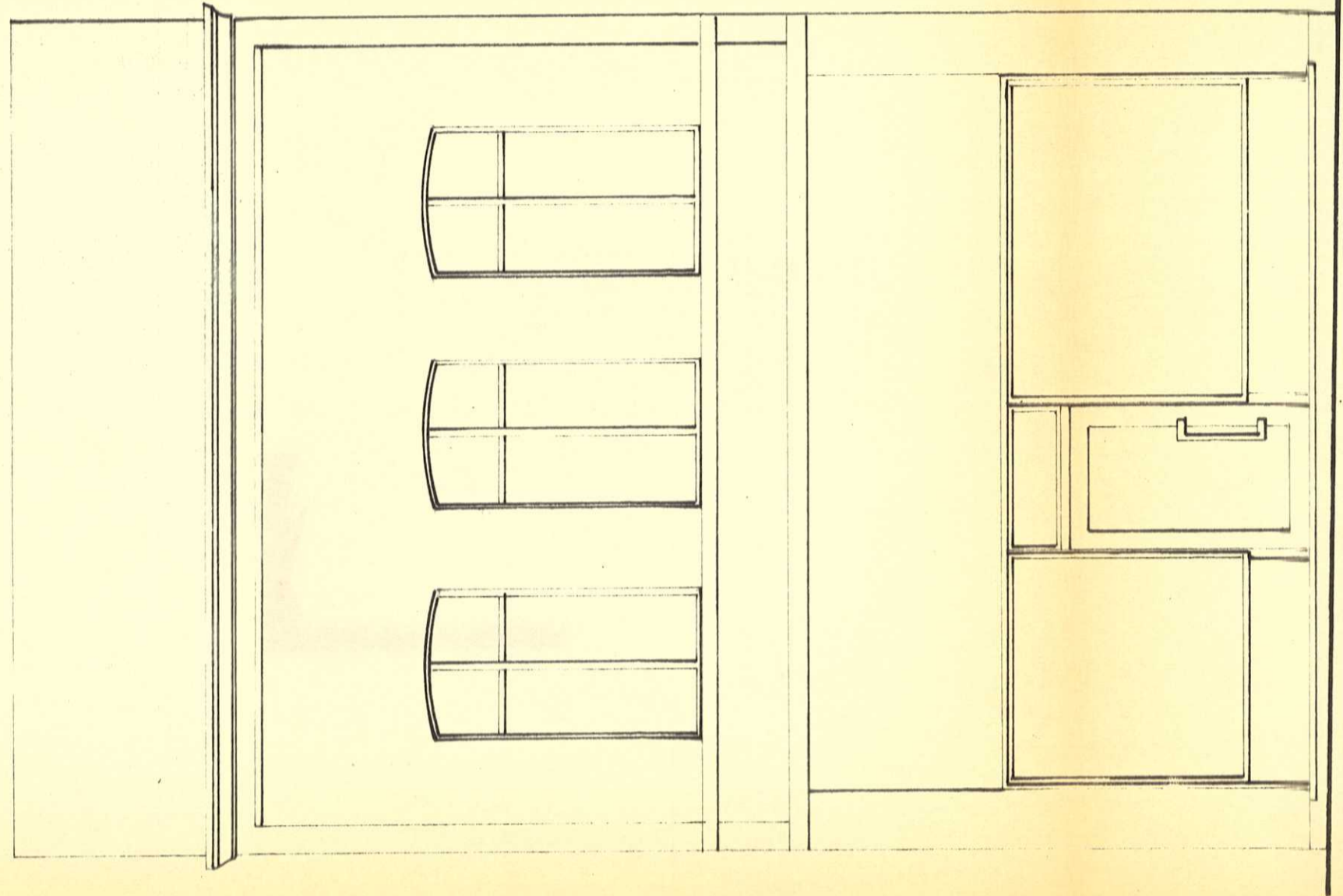
COUPE EF



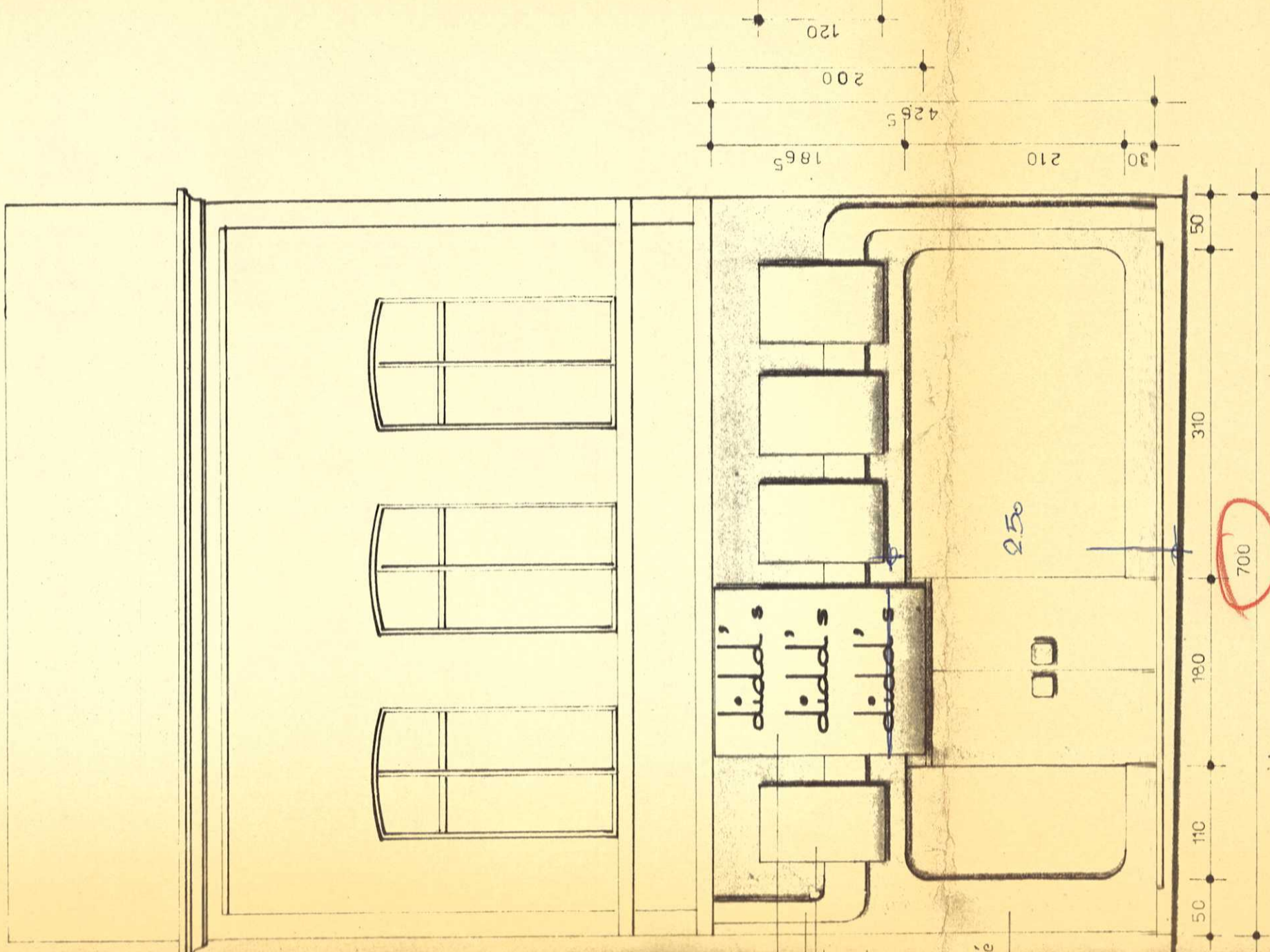
COUPE AB



FACADE EXISTANTE



NOUVELLE FACADE



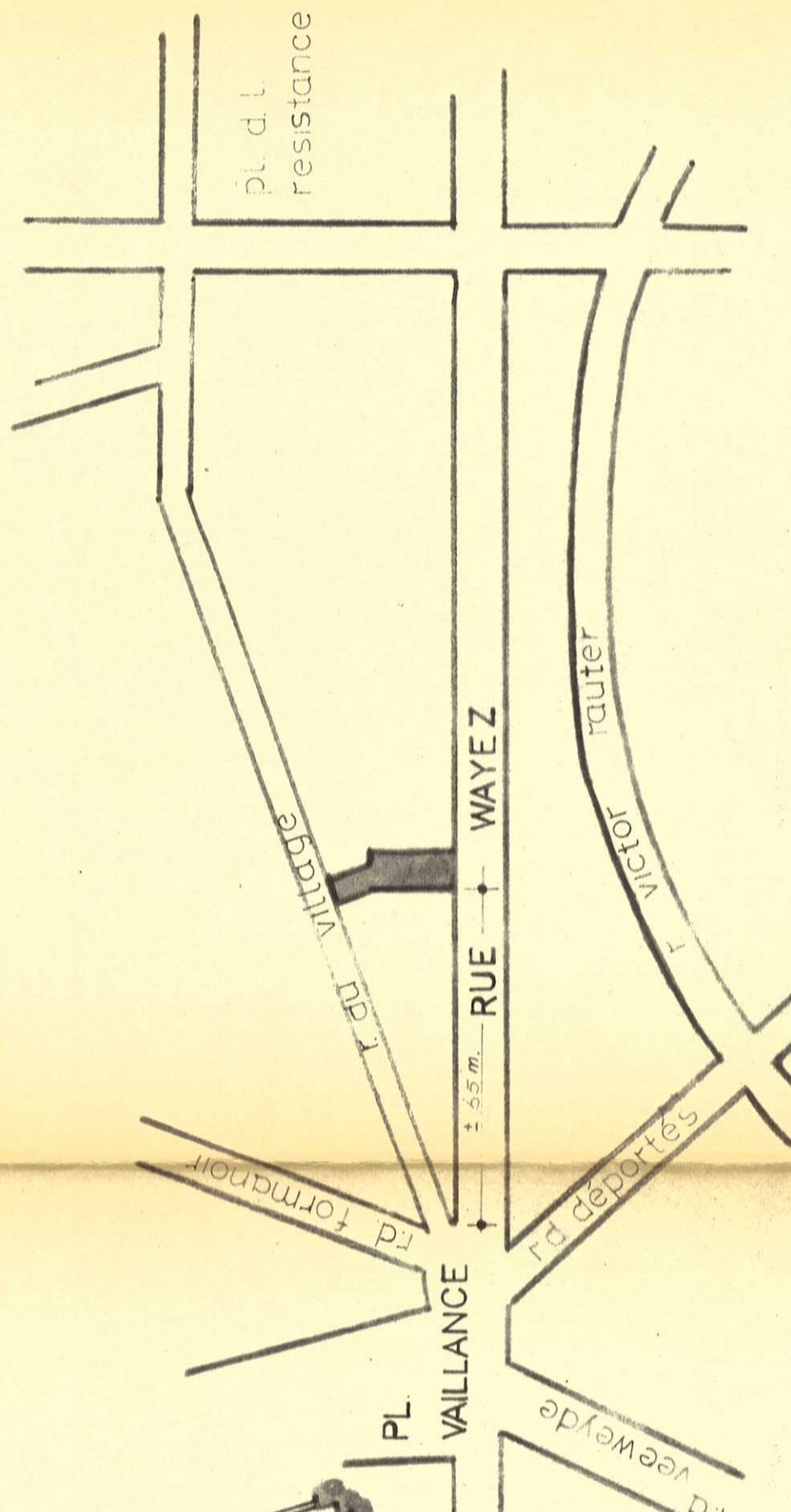
367871

TRANSFORMATION IMMEUBLE
 sis: RUE WAYEZ 169 1070 BRUX.
 pour compte de:
 S.P.R.L. PRACIL
 59, ch. de Gand 1080 BRUX.
 propr.: VEDOVI MARIO
 av Van Gysel WEMMEL
 locataire: SPRL. PRACIL

architecte: *OMILOO Willy*
 40, Av. Clays
 Bruxelles 3 Tél. 41.00.77

plan D1
 éch: 2 %

I.G.M. r. beckers 19 1040 BR. 49.43.90



cadastre section A
 nr. 599.0.12

- A CONSERVER
- A CONSTRUIRE
- A DEMOLIR