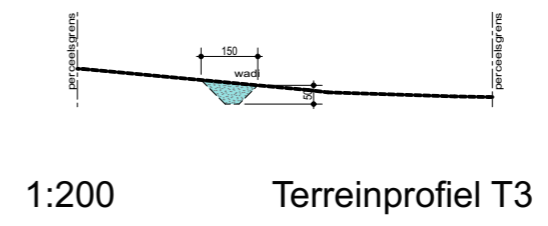
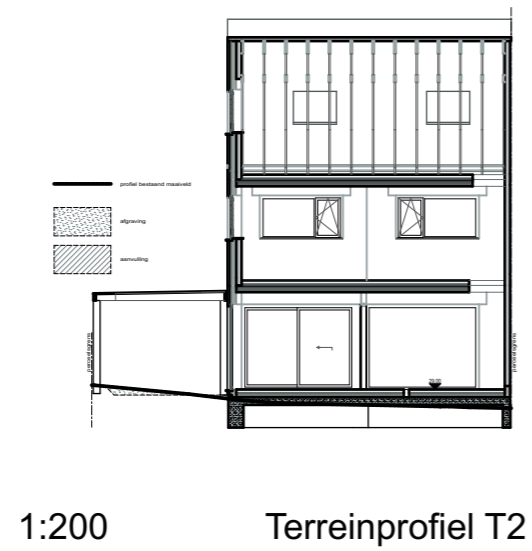
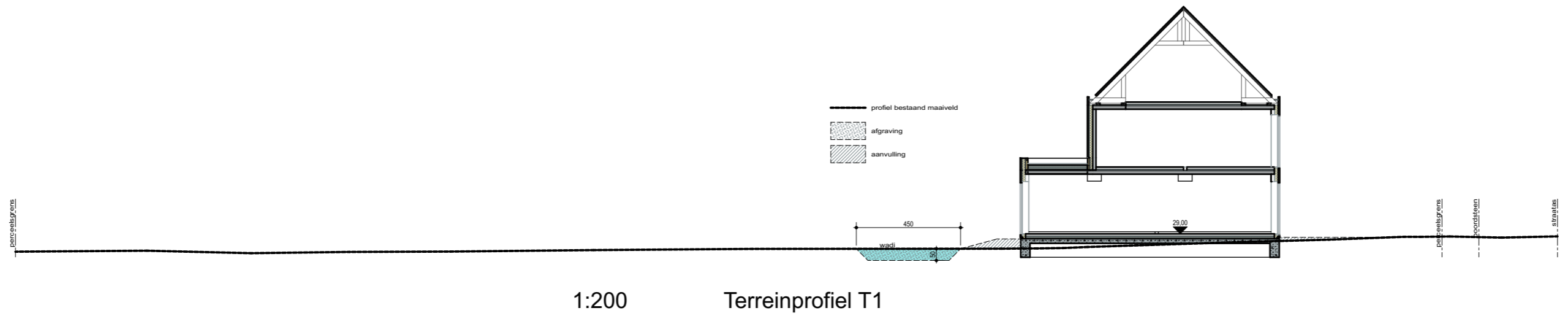
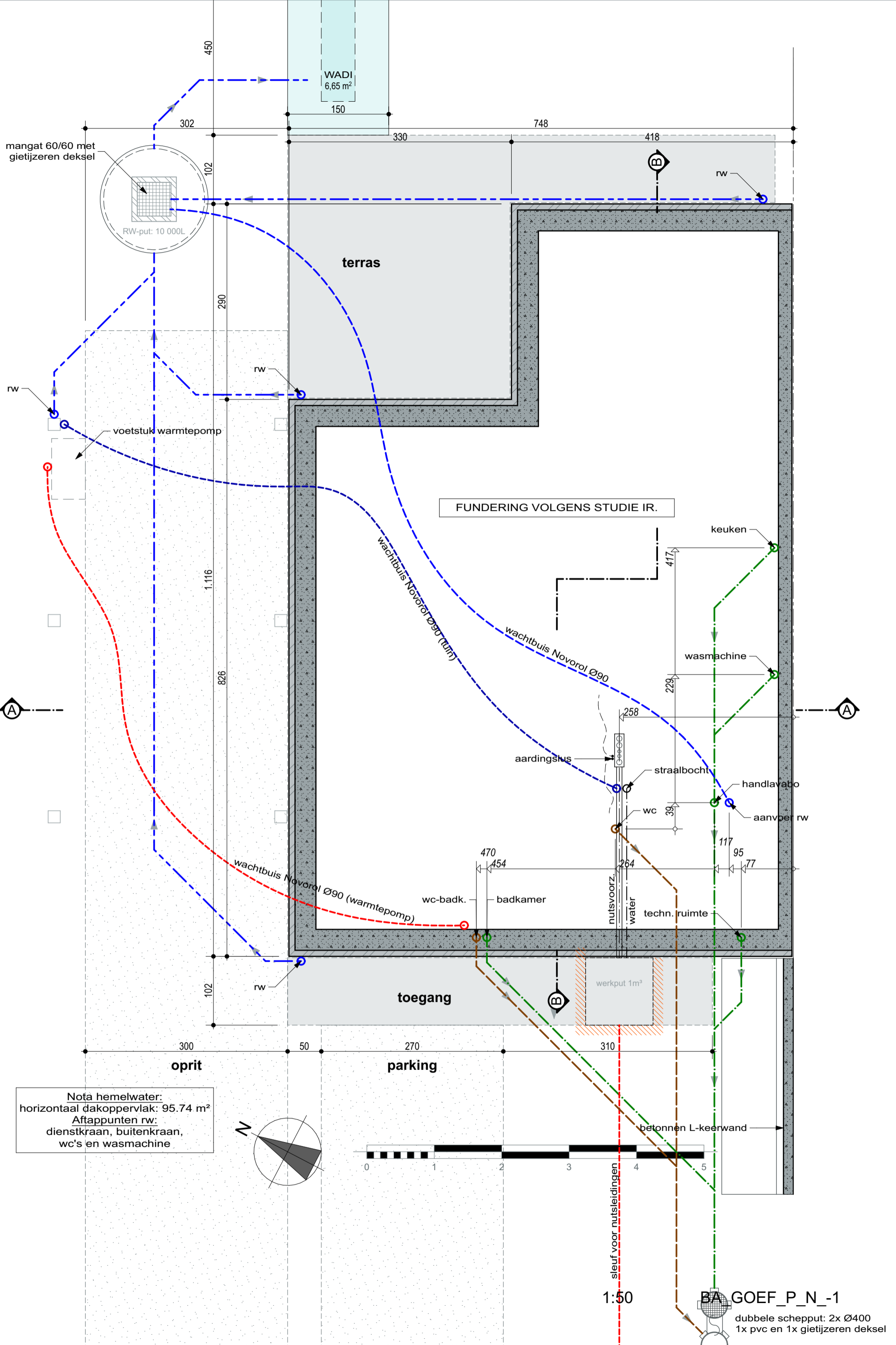


KASTANJESTRAAT

1:200

BA_GOEF_I_N_1





mangat 60/60 met gietijzeren deksel

RW-put: 10 000L

WADI
6,65 m²

terras

FUNDERING VOLGENS STUDIE IR.

keuken

wasmachine

handlavabo

aanvoer rw

aardingslus

straalbocht

wc

wc-badk.

badkamer

nutsvoorz.

water

techn. ruimte

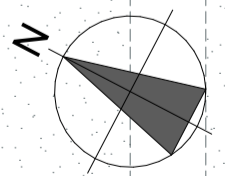
toegang

werkput 1m³

parking

betonnen L-keerwand

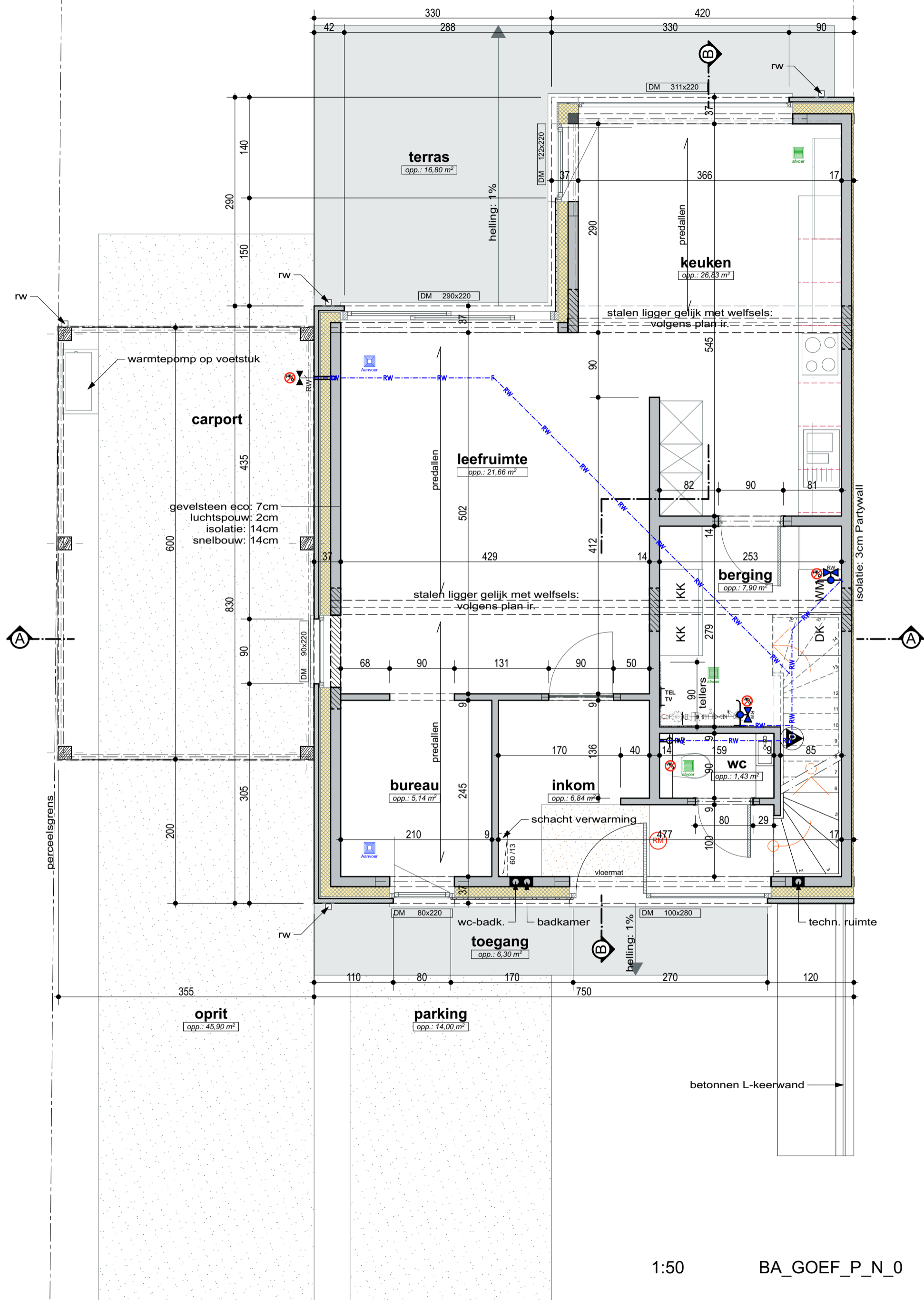
Nota hemelwater:
horizontaal dakoppervlak: 95.74 m²
Aftappunten rw:
dienstkraan, buitenkraan,
wc's en wasmachine

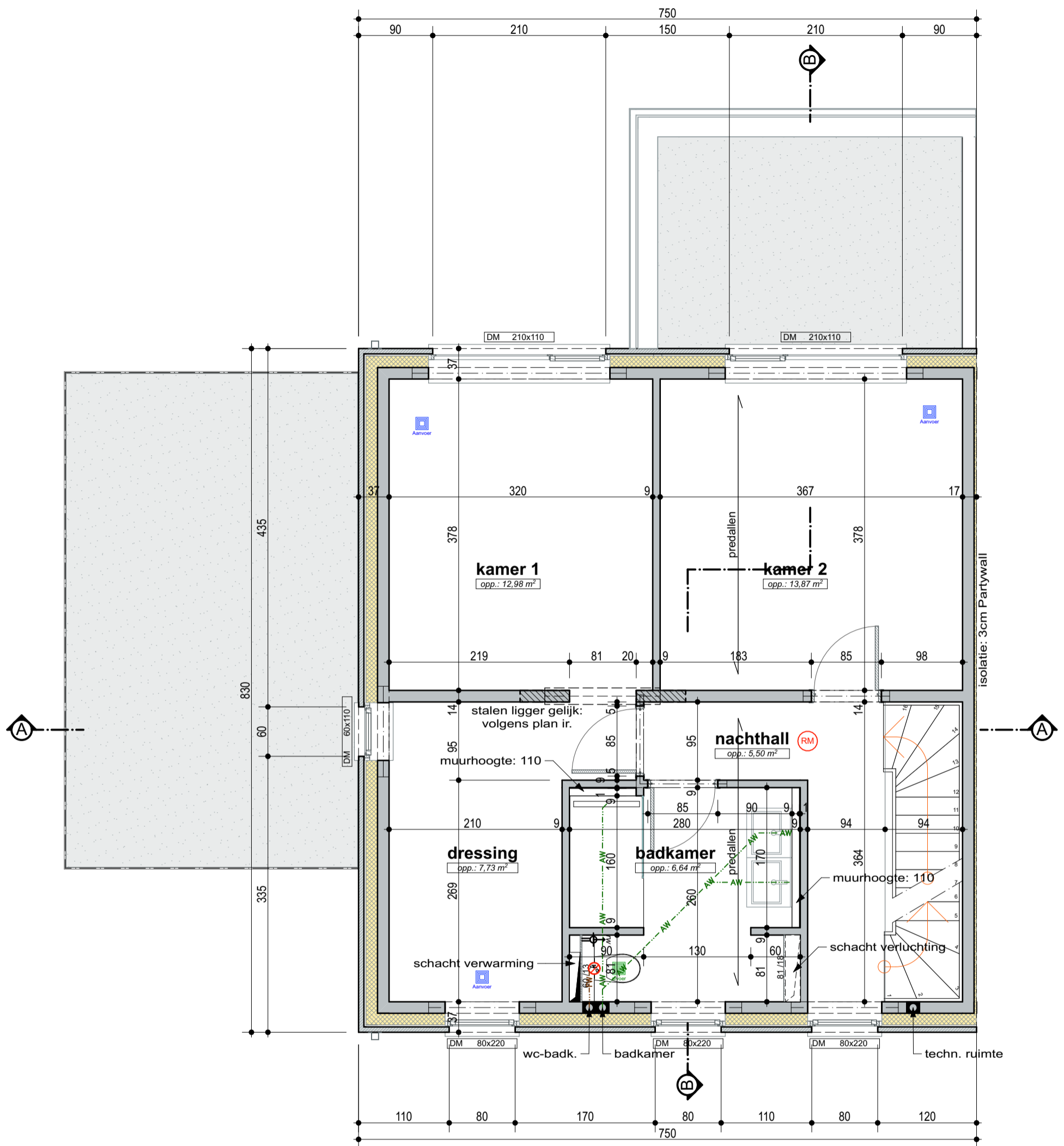


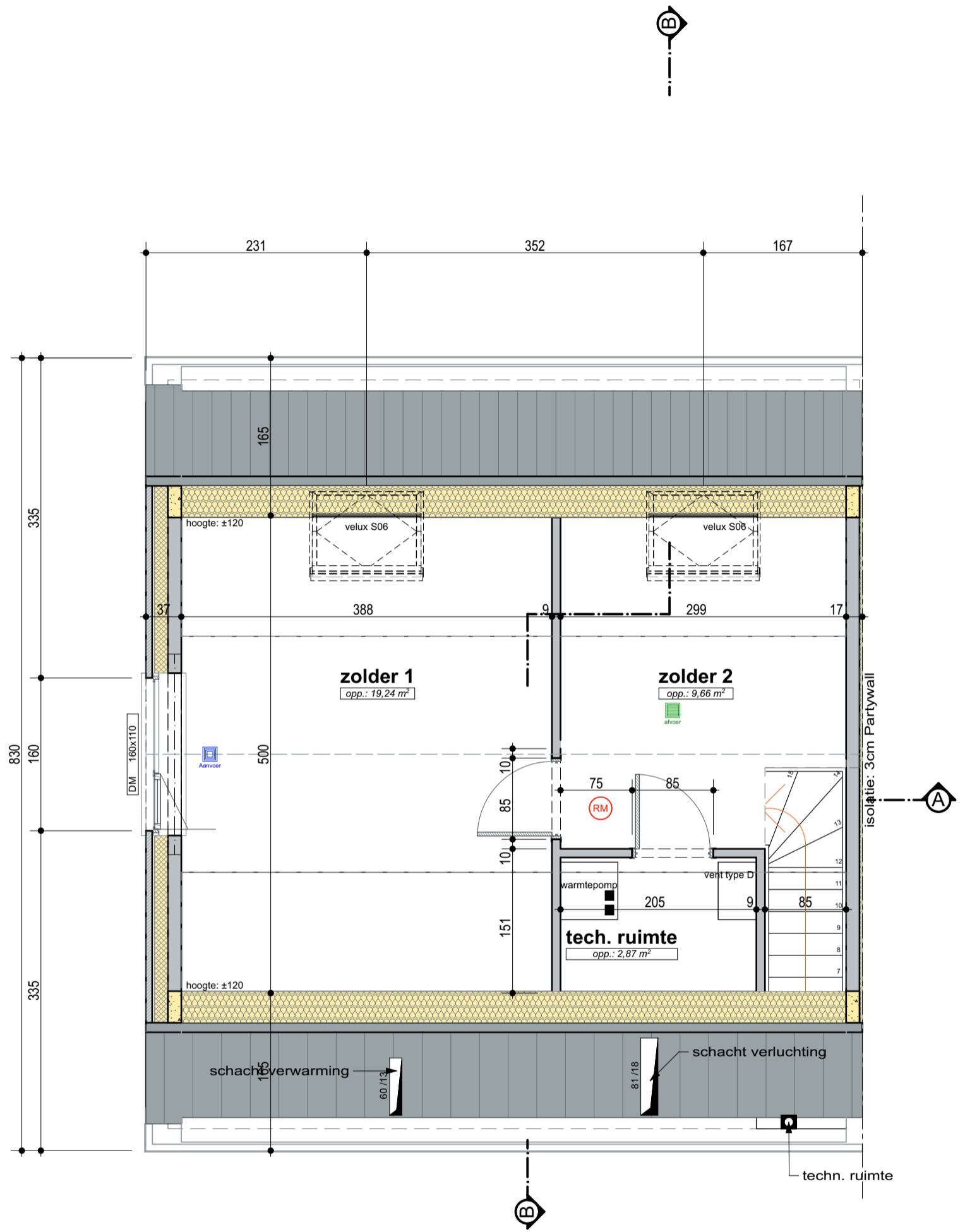
1:50

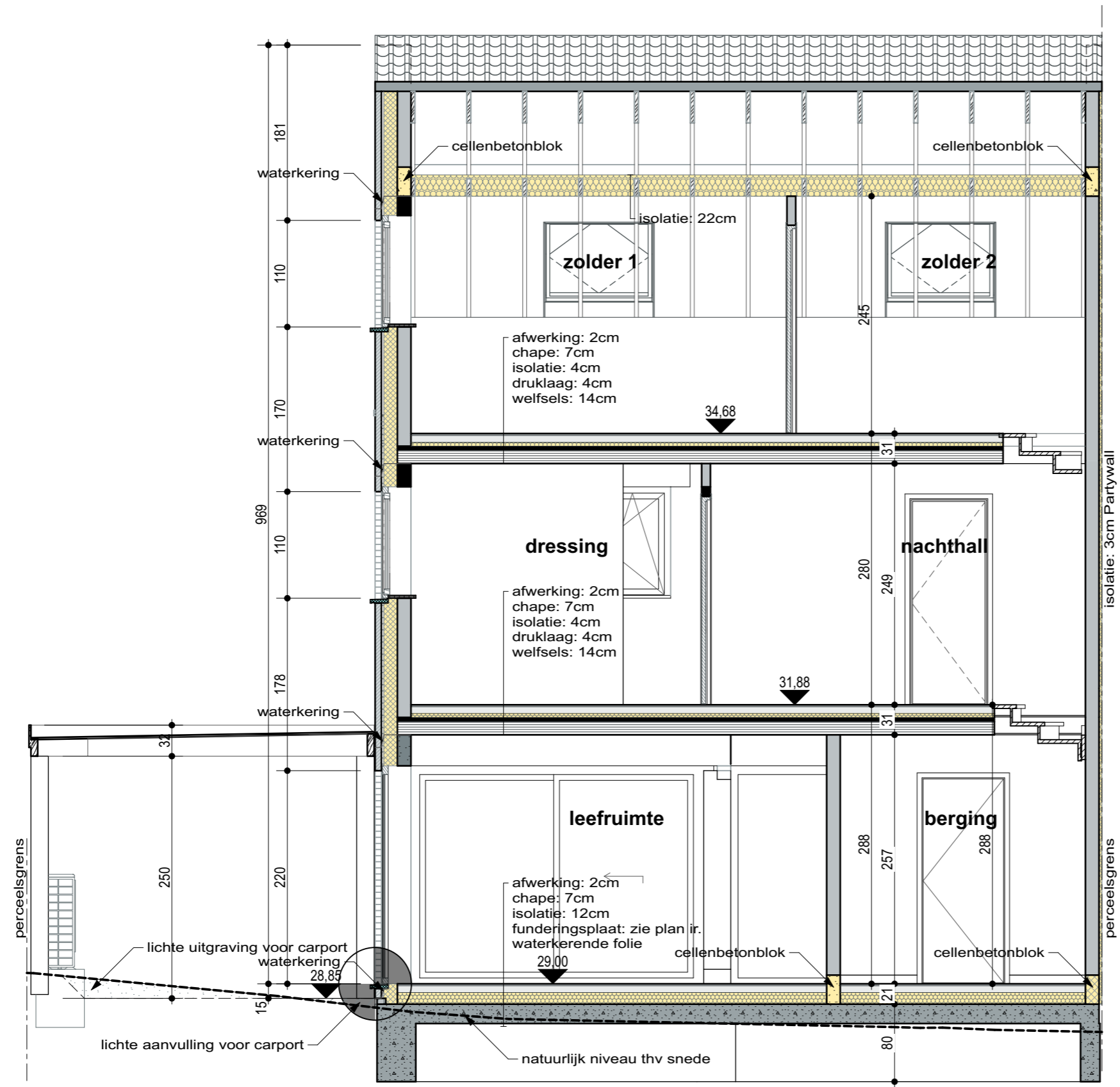
BA_GOEF_P_N_-1

dubbele schepput: 2x Ø400
1x pvc en 1x gietijzeren deksel

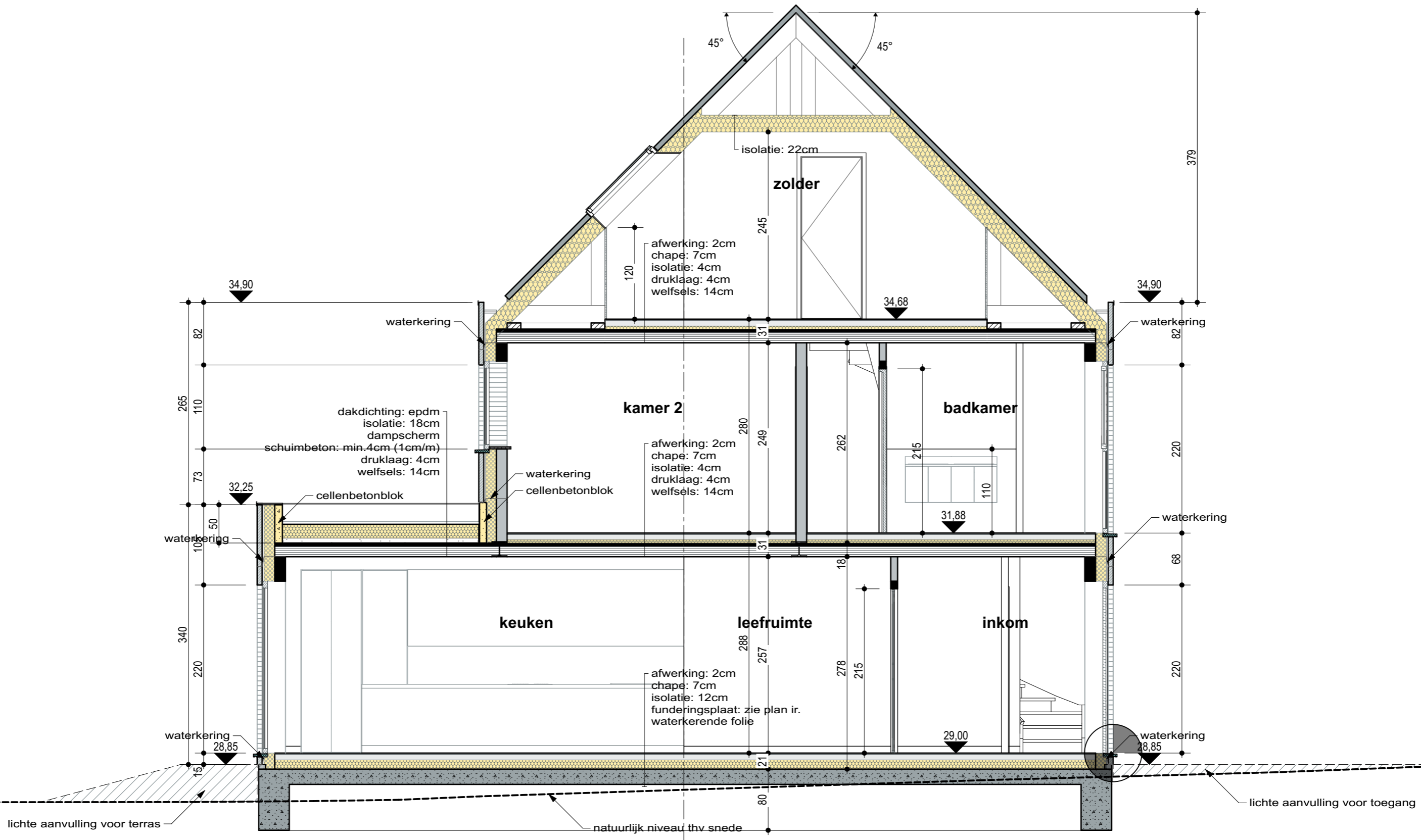








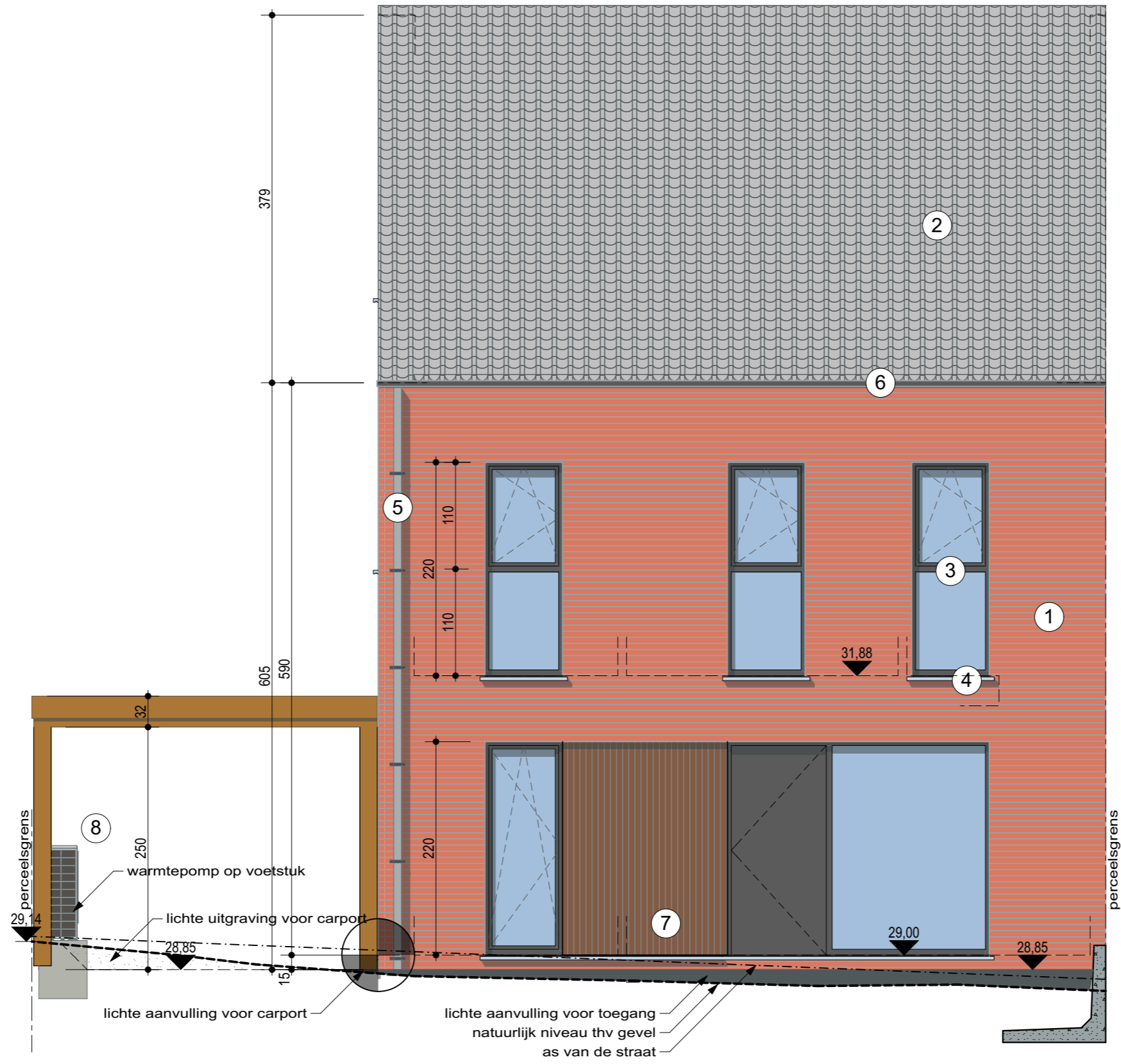
FUNDERING VOLGENS STUDIE IR.

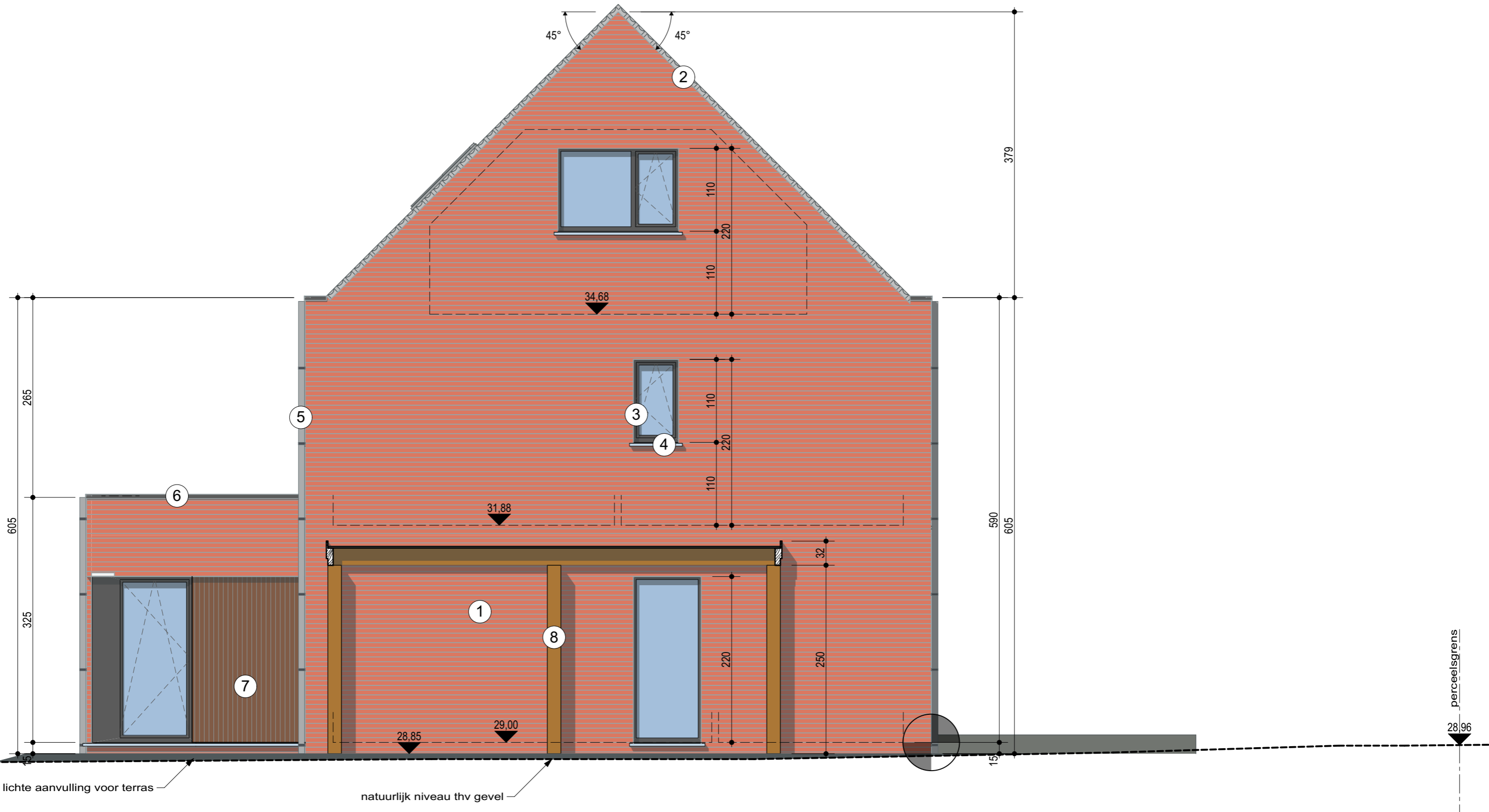


FUNDERING VOLGENS STUDIE IR.

1:50

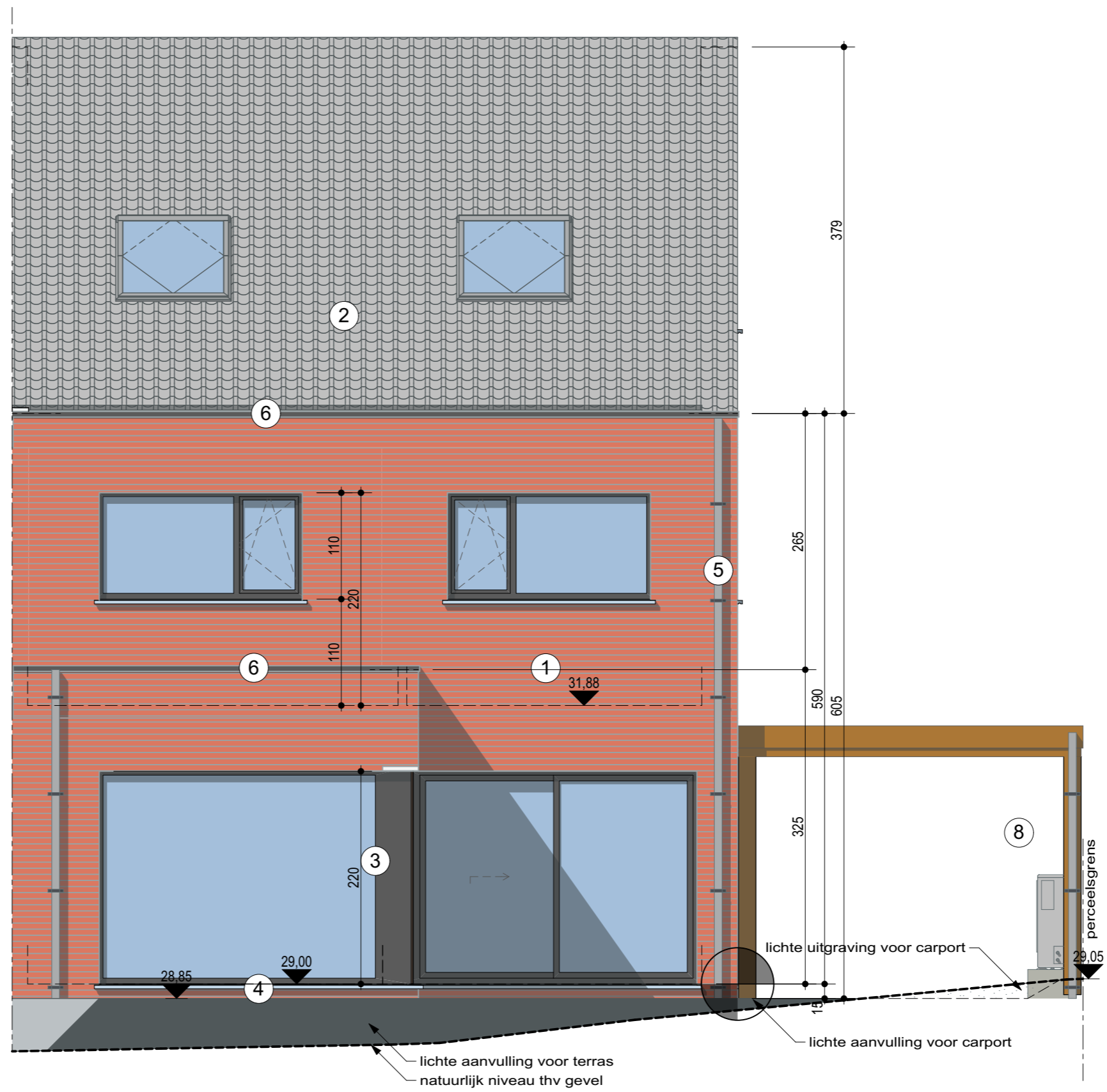
BA_GOEF_S_N_BB





1:50

BA_GOEF_G_N_LINKS



1:50 BA_GOEF_G_N_ACHTER