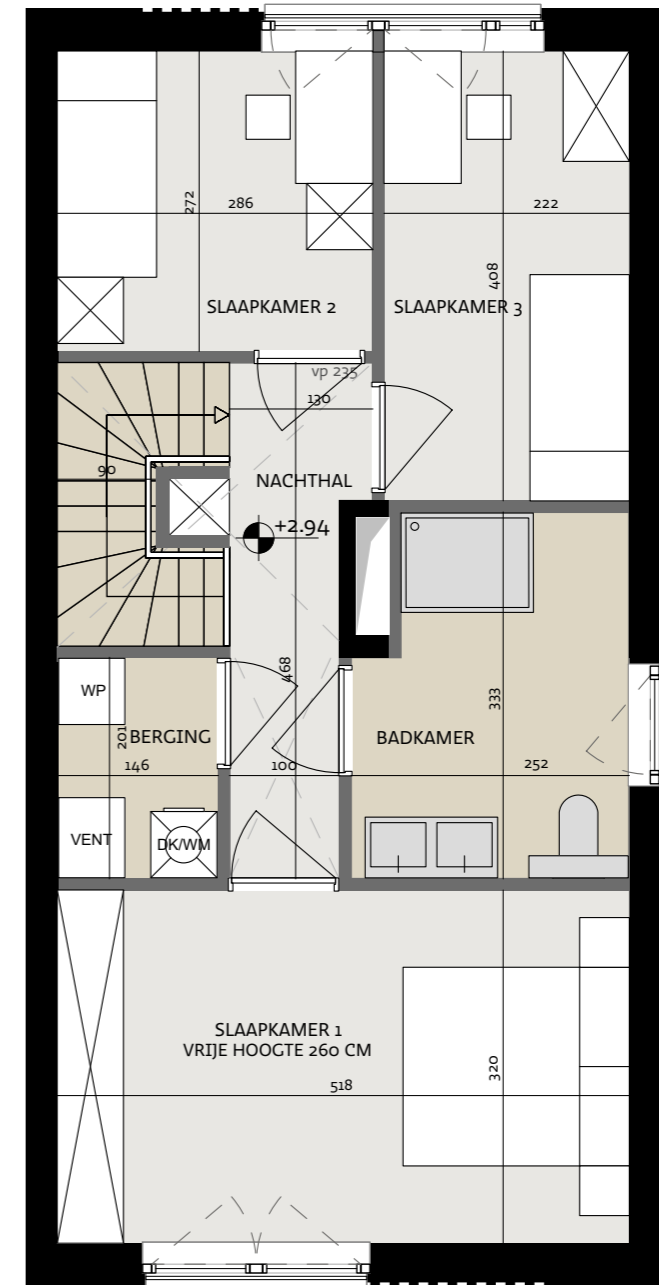
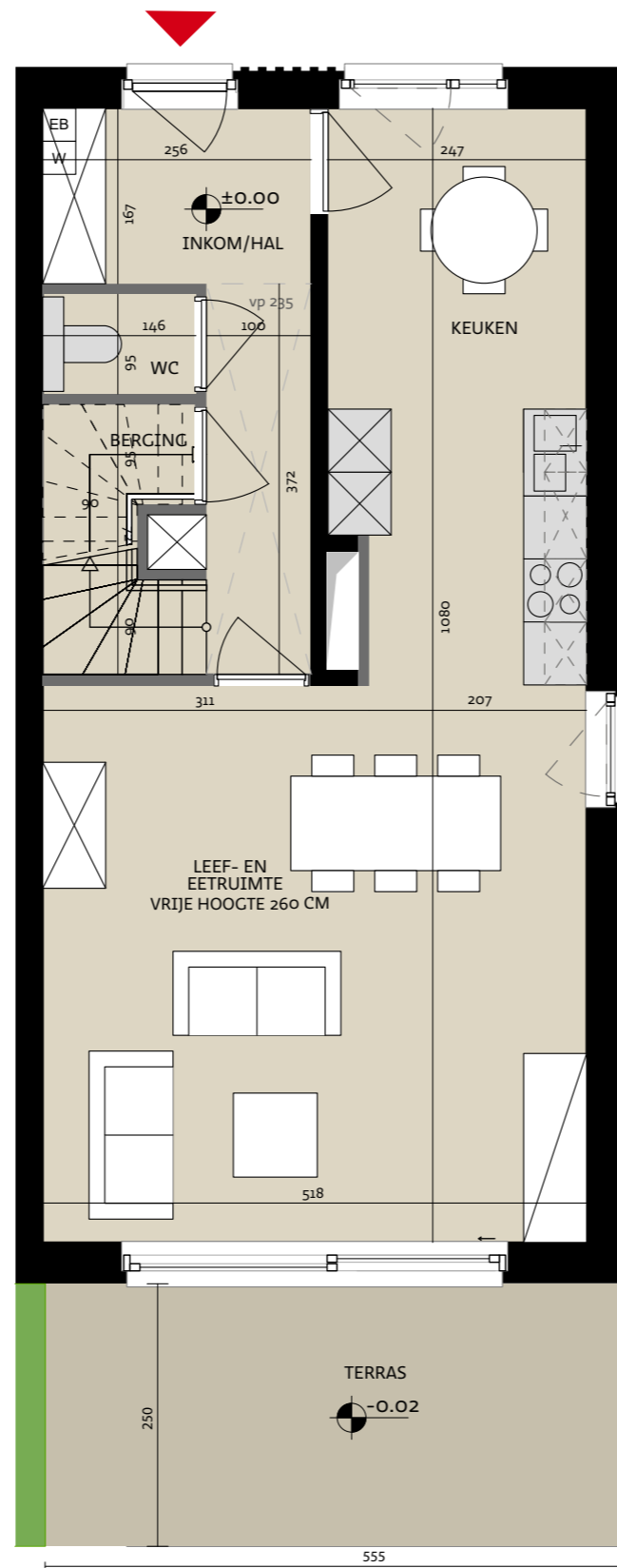


Woning nr. 13

Type B



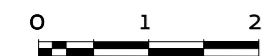
Datum:

Handtekening kopers:



Tonkinstraat 13, 9700 Oudenaarde

Bruto oppervlakte 133,20 m²
 Slaapkamers 3
 Perceel 404,80 m²



Vooranzicht



Situeringplan



Projectontwikkelaar
steenoven



ALHEEMBOUW

Kwadestraat 149a bus 3.1
 8800 Roeselare

Architect

WES

Empress

Edmond Blockstraat 9
 9050 Gentbrugge