

Woning nr. 18

Type B

Datum:

Handtekening kopers:

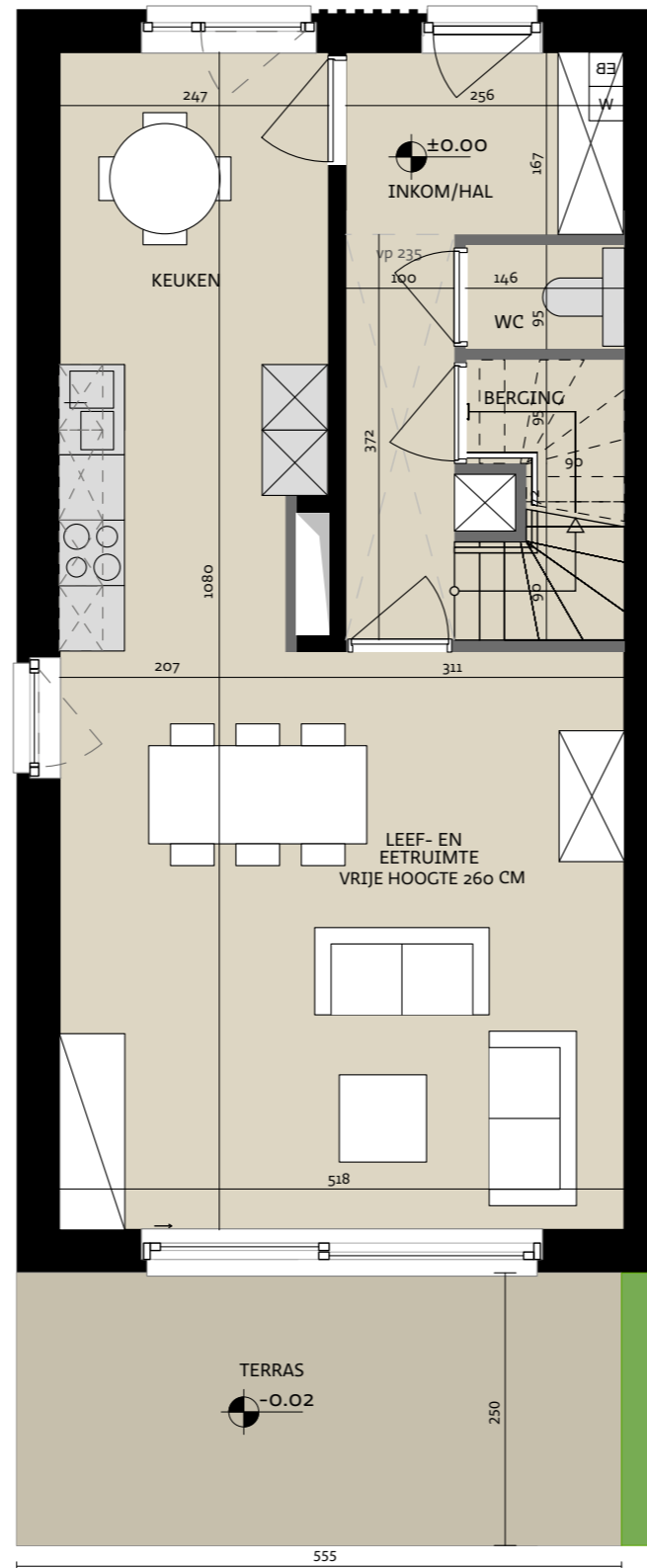
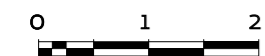


Tonkinstraat 18, 9700 Oudenaarde

Bruto oppervlakte 133,20 m²

Slaapkamers 3

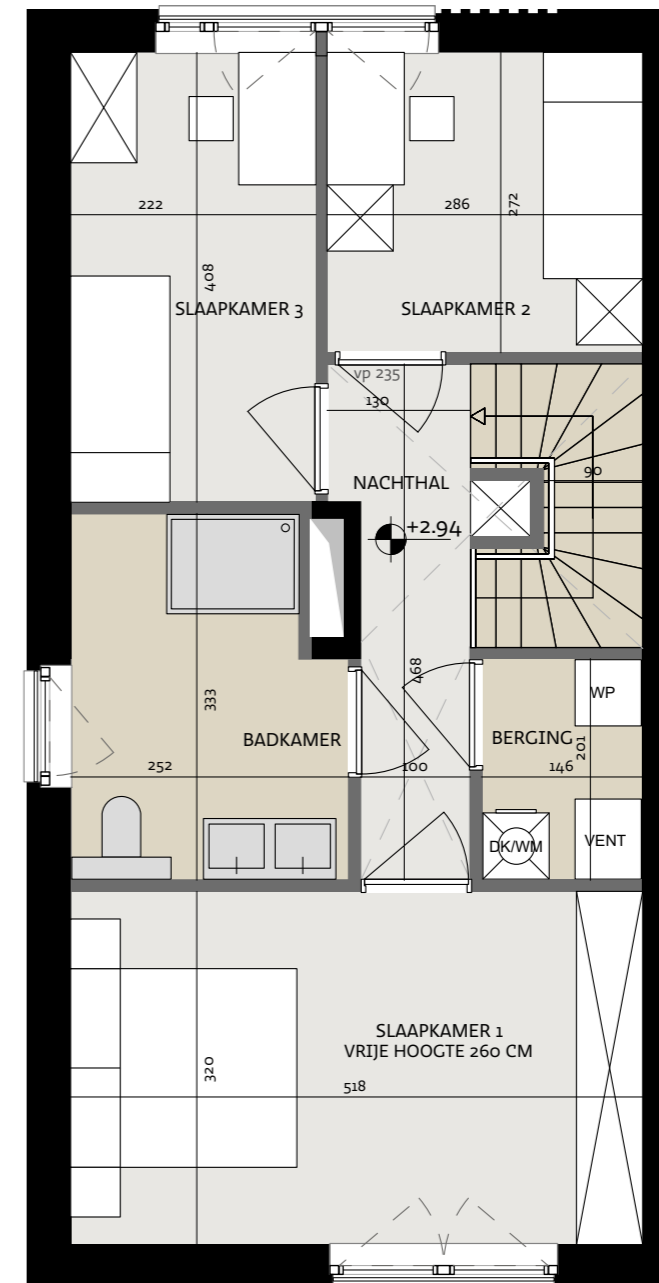
Perceel 385,80 m²



Vooranzicht



Situeringsplan



Projectontwikkelaar
steenoven



ALHEEMBOUW

Kwadestraat 149a bus 3.1
8800 Roeselare

Architect

WES



Edmond Blockstraat 9
9050 Gentbrugge