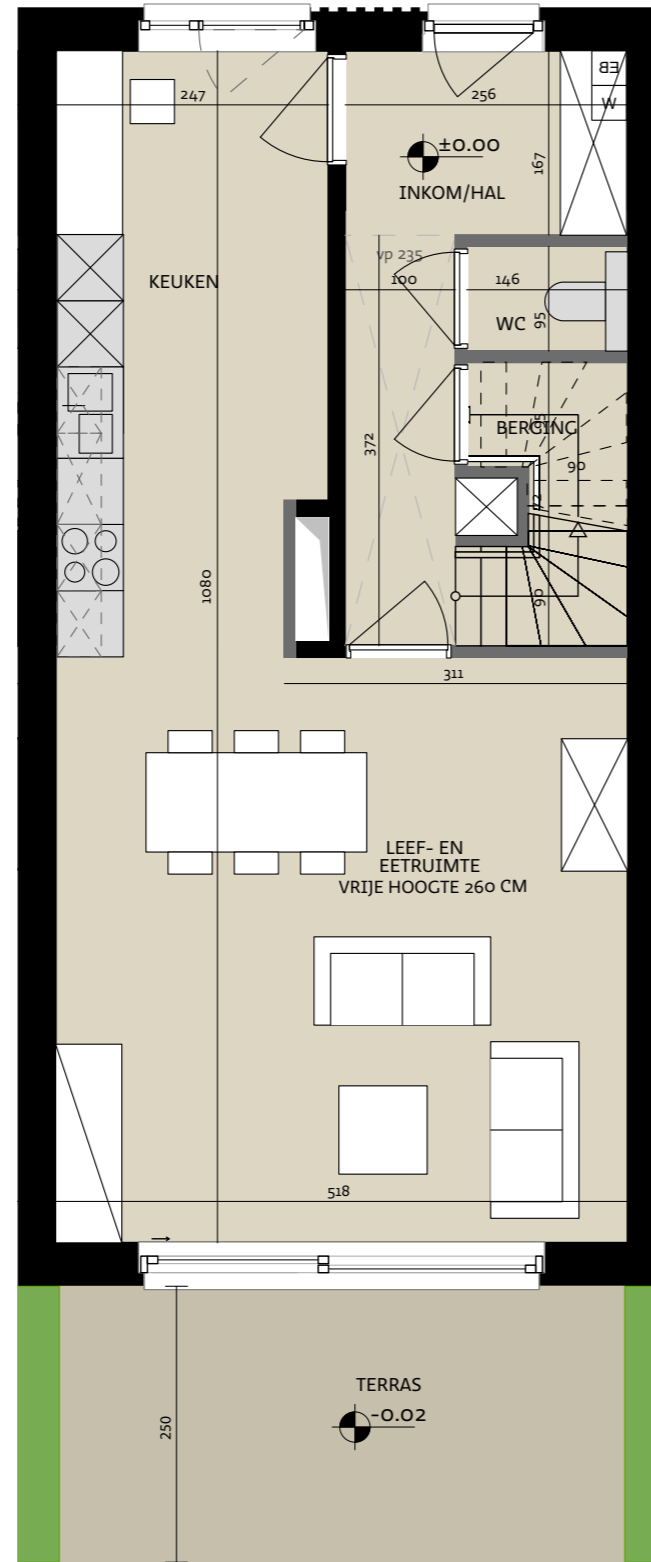
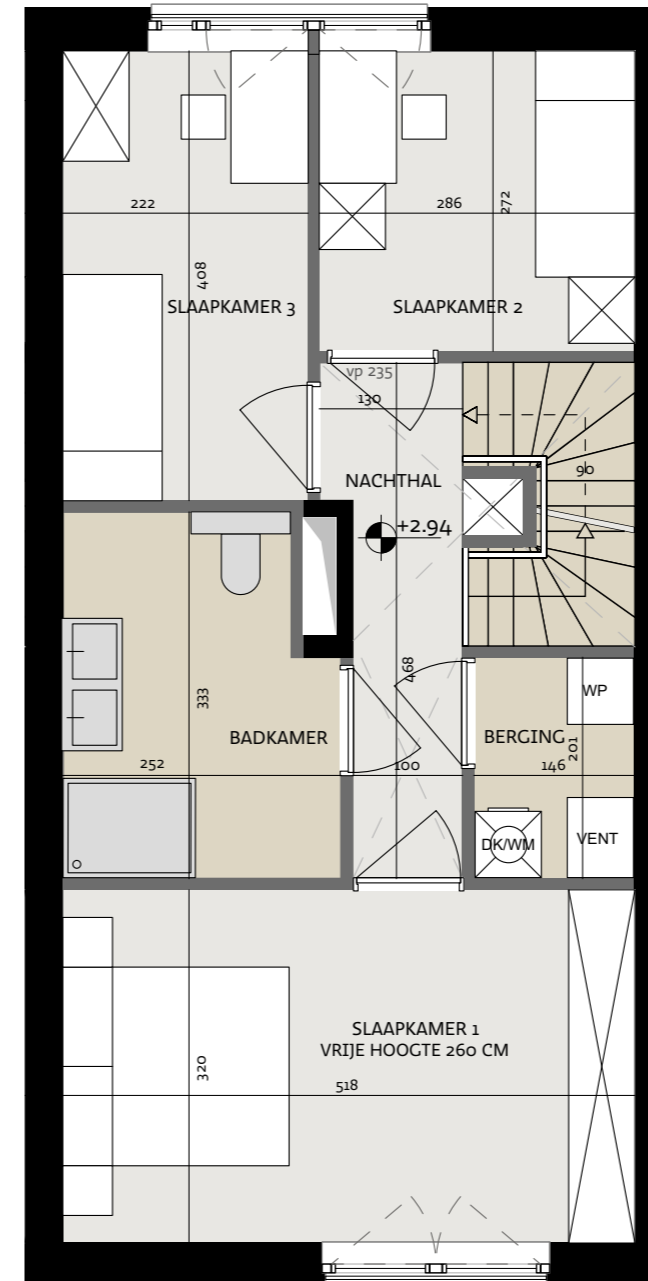


Woning nr. 17

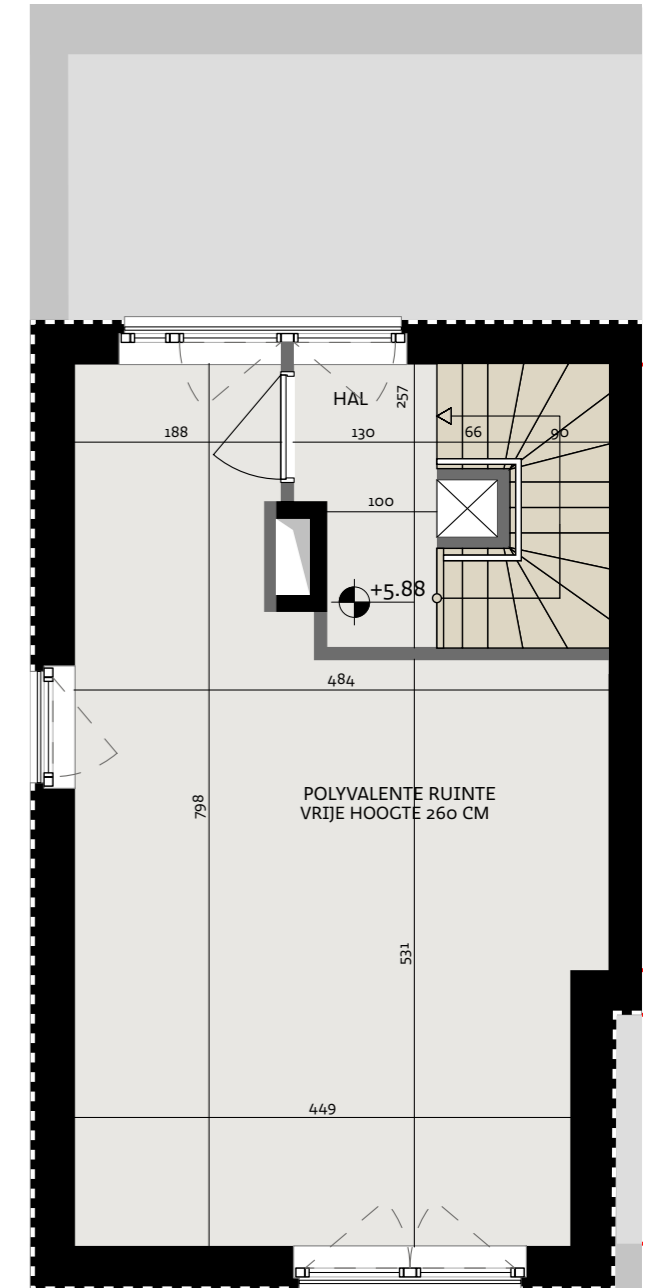
Type C



Voor aanzicht



Situering plan

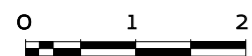


Datum: _____
 Handtekening kopers: _____



Tonkinstraat 17, 9700 Oudenaarde

Bruto oppervlakte 175,20 m²
 Slaapkamers 3
 Perceel 183,50 m²



Projectontwikkelaar
steenoven



ALHEEMBOUW
 Kwadestraat 149a bus 3.1
 8800 Roeselare

Architect
WES



Edmond Blockstraat 9
 9050 Gentbrugge