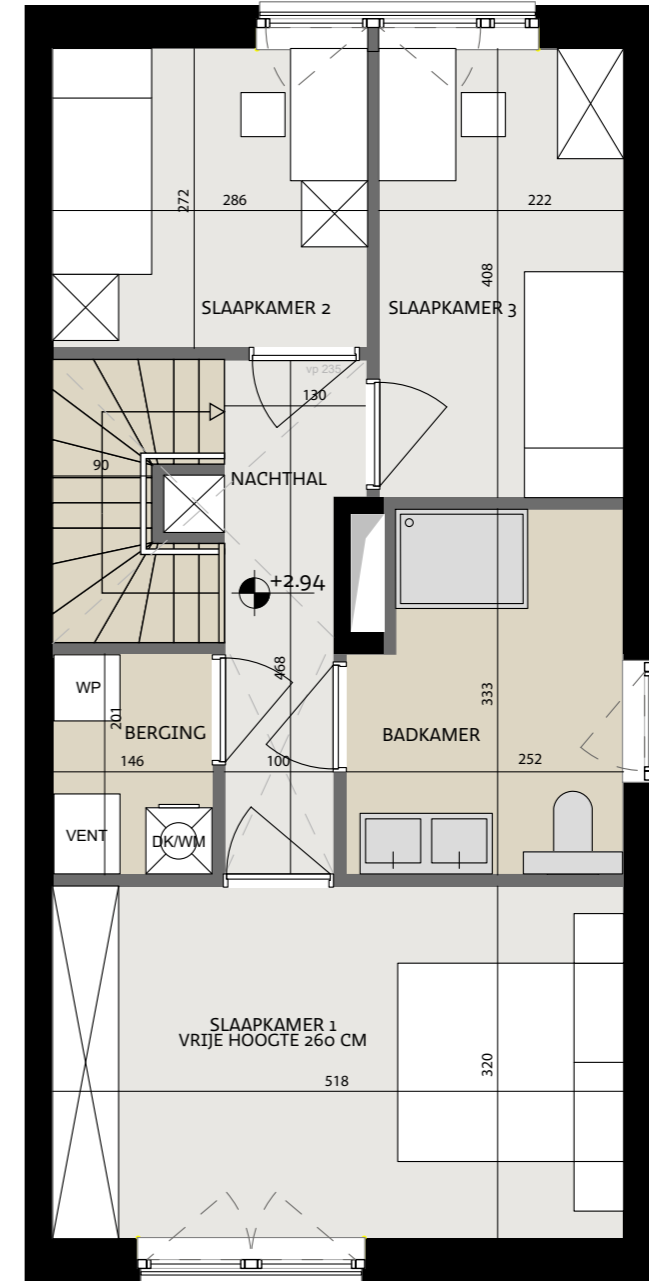
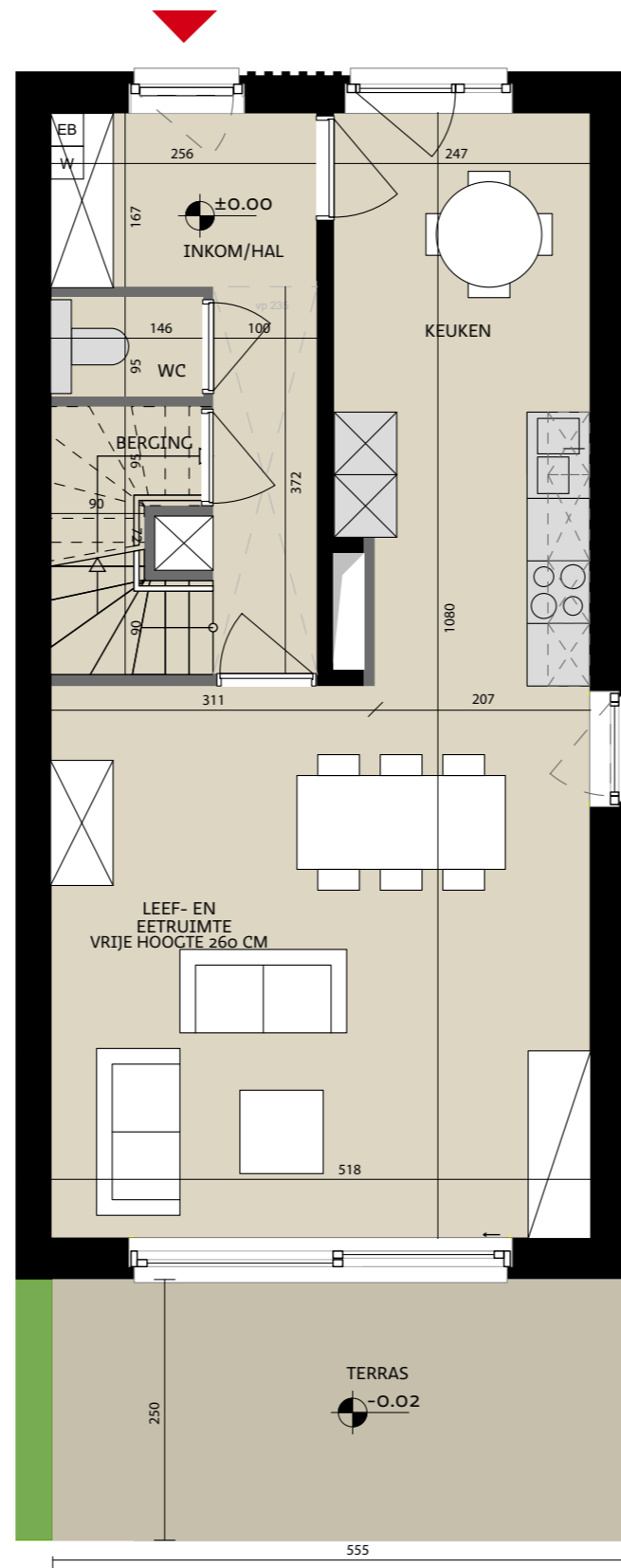


Woning nr. 19

Type B



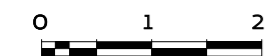
Datum:

Handtekening kopers:



Tonkinstraat 19, 9700 Oudenaarde

Bruto oppervlakte 133,20 m²
 Slaapkamers 3
 Perceel 371,77 m²



Vooranzicht



Situeringplan



Projectontwikkelaar
steenoven



ALHEEMBOUW

Kwadestraat 149a bus 3.1
 8800 Roeselare

Architect

WES

Edmond

Edmond Blockstraat 9
 9050 Gentbrugge