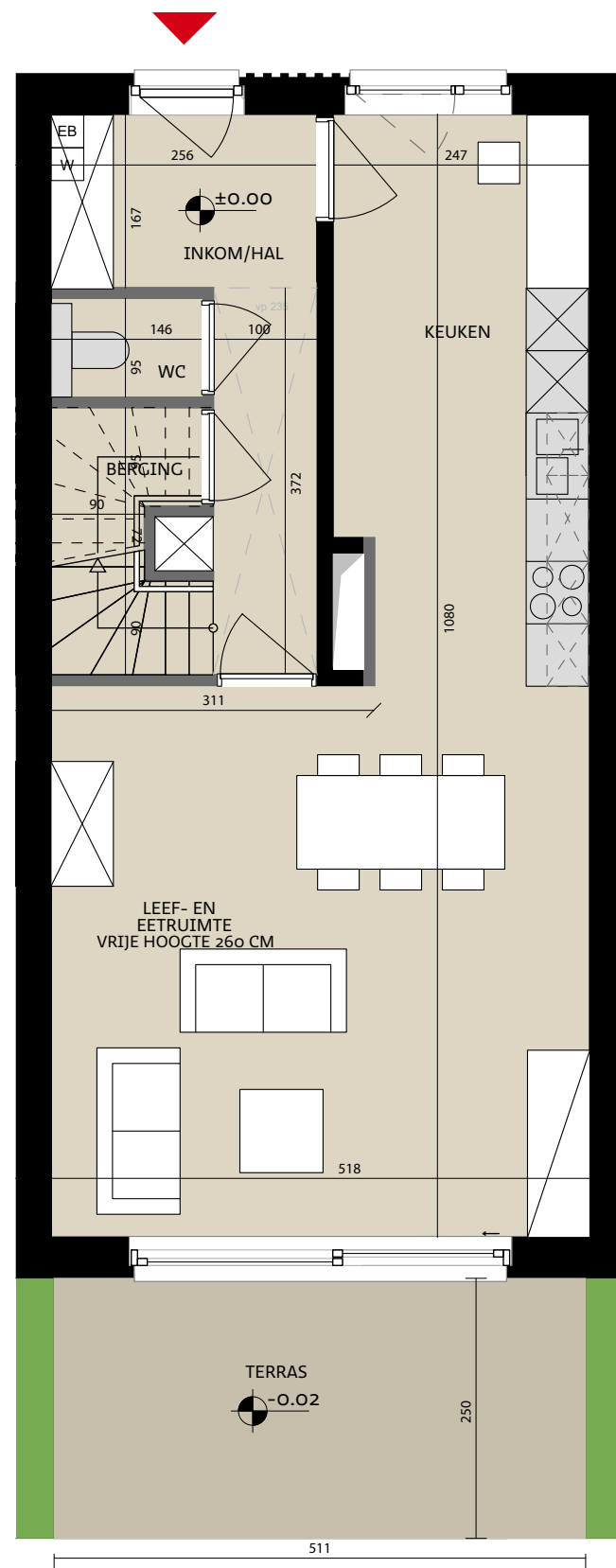
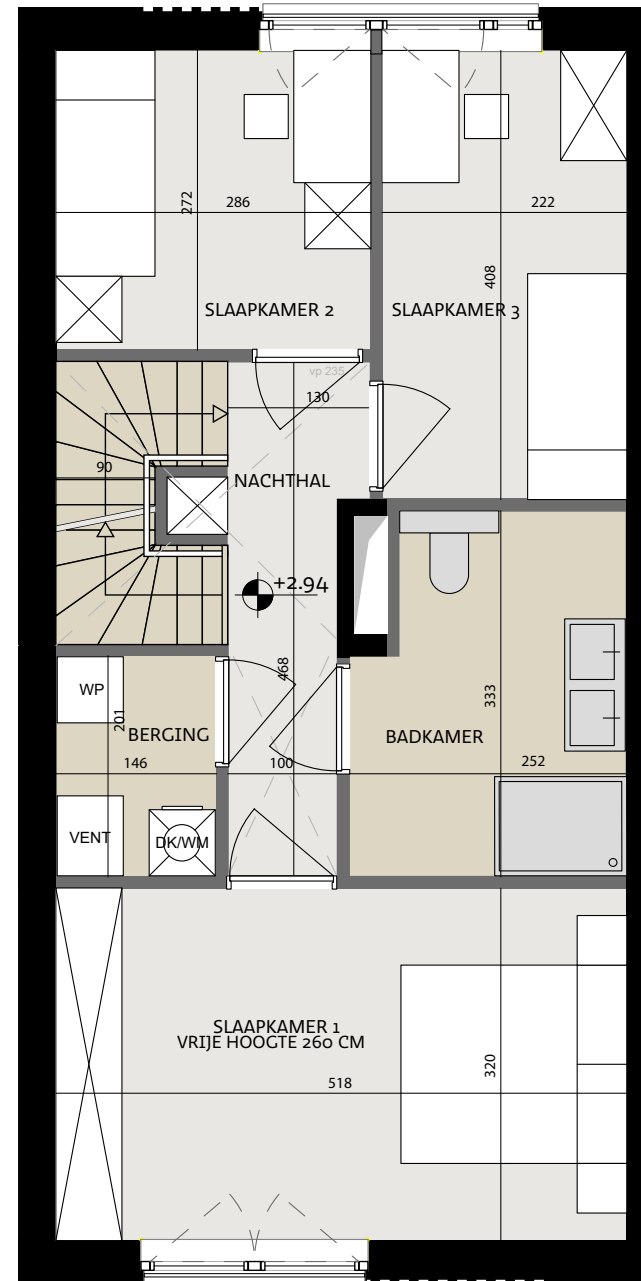


Woning nr. 20

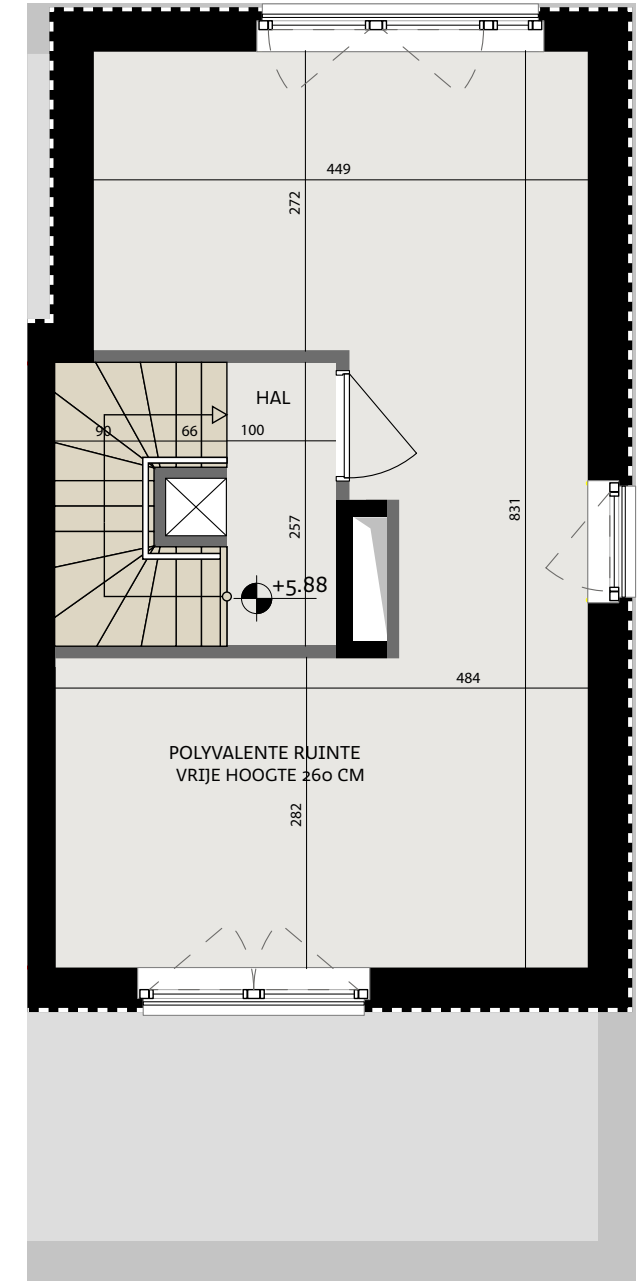
Type C



Vooranzicht



Situeringplan



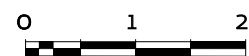
Datum:

Handtekening kopers:



Tonkinstraat 20, 9700 Oudenaarde

Bruto oppervlakte 176,90 m²
 Slaapkamers 3
 Perceel 155,51 m²



Projectontwikkelaar
steenoven



ALHEEMBOUW

Kwadestraat 149a bus 3.1
 8800 Roeselare

Architect

WES



Edmond Blockstraat 9
 9050 Gentbrugge