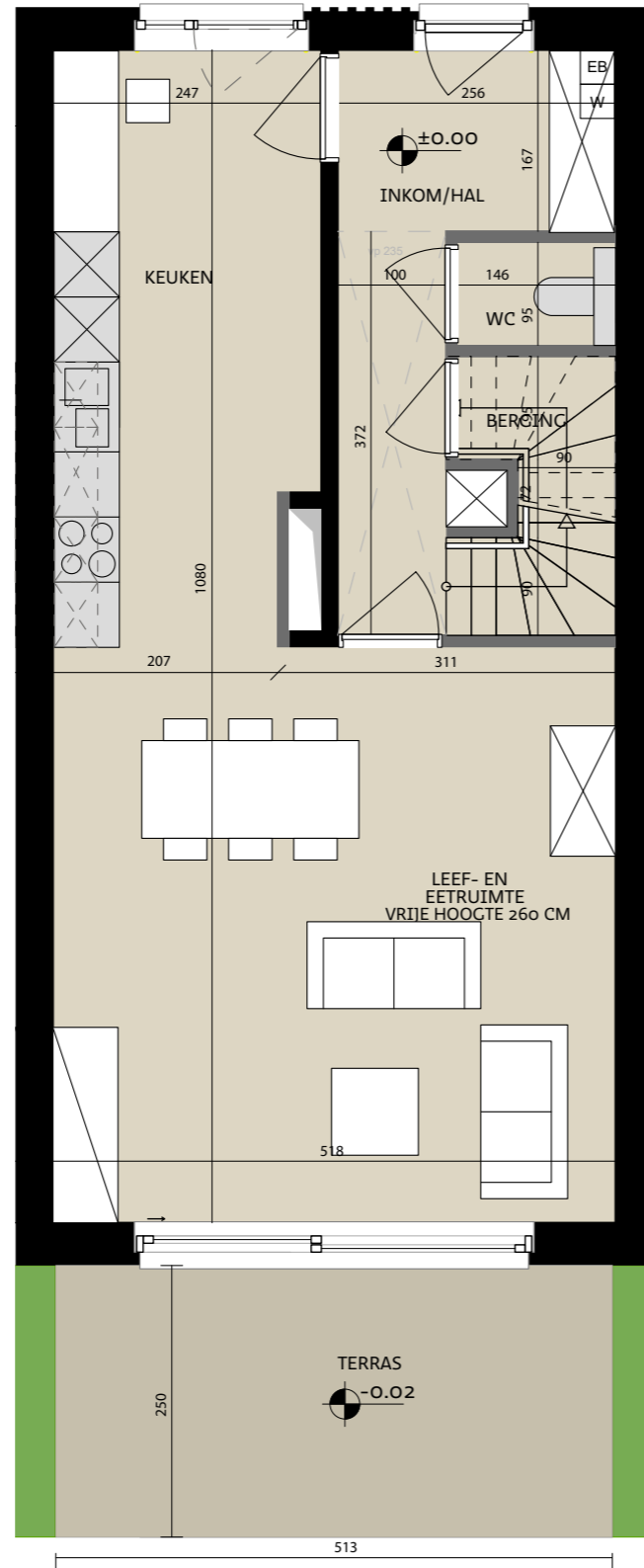
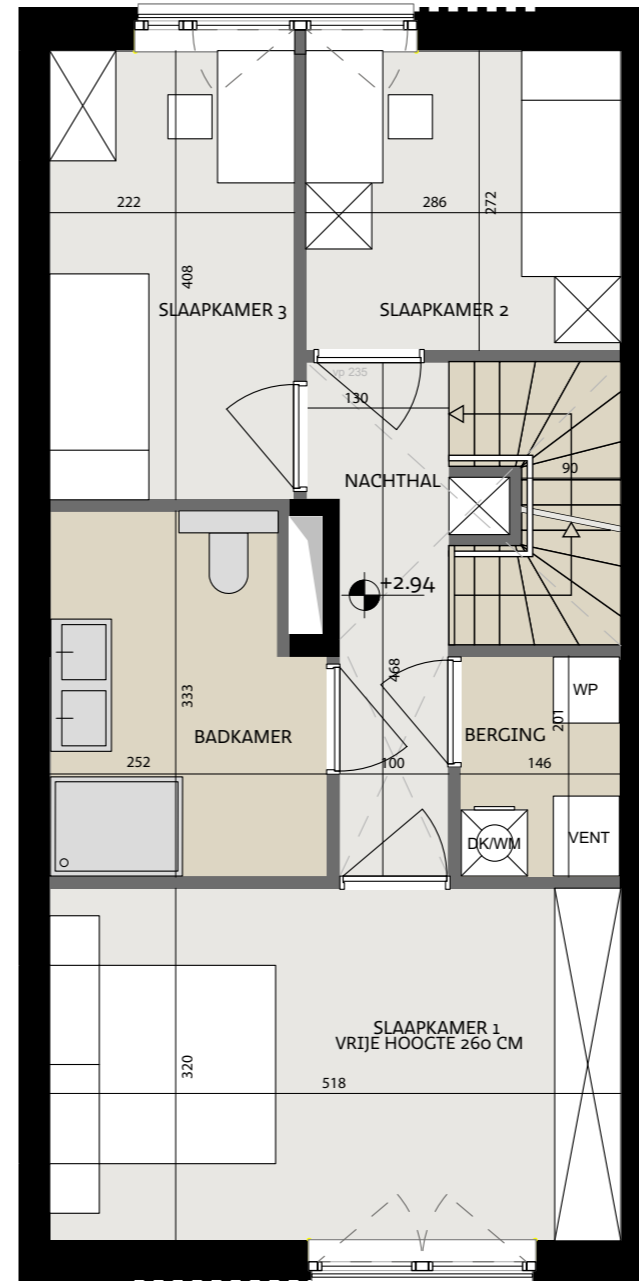


Woning nr. 21

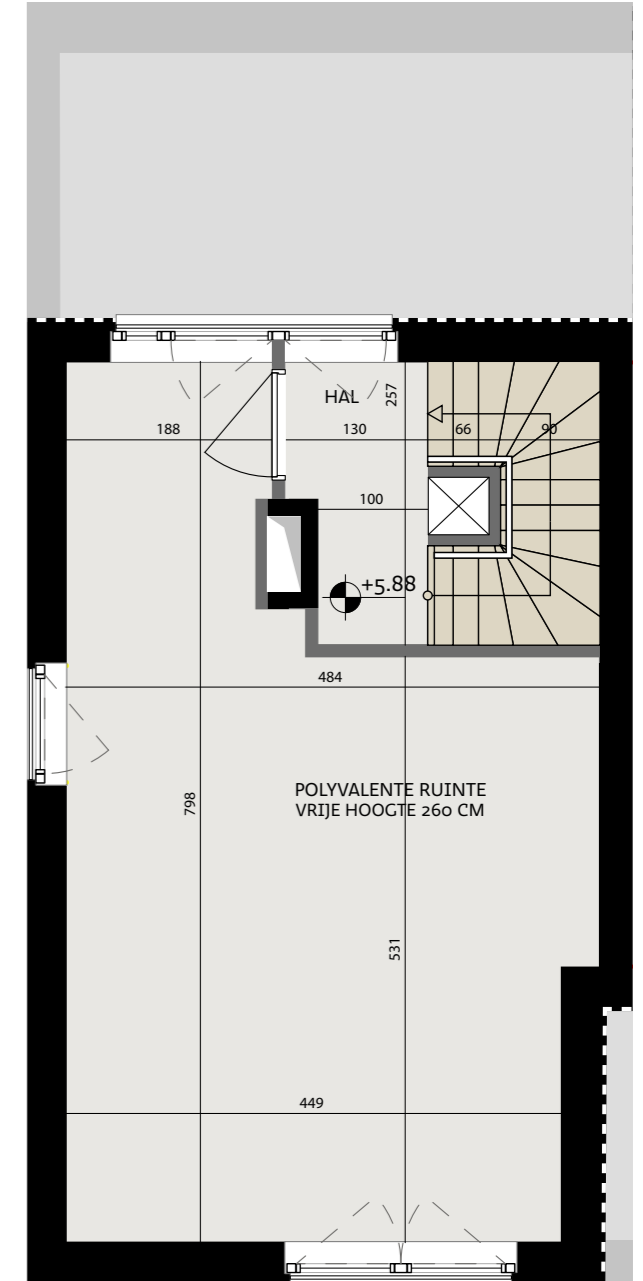
Type C



Vooranzicht



Situeringsplan



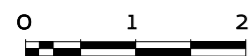
Datum:

Handtekening kopers:



Tonkinstraat 21, 9700 Oudenaarde

Bruto oppervlakte 175,20 m²
Slaapkamers 3
Perceel 153,68 m²



Projectontwikkelaar
steenoven



ALHEEMBOUW

Kwadestraat 149a bus 3.1
8800 Roeselare

Architect

WES

Edmond Blockstraat 9

Edmond Blockstraat 9
9050 Gentbrugge