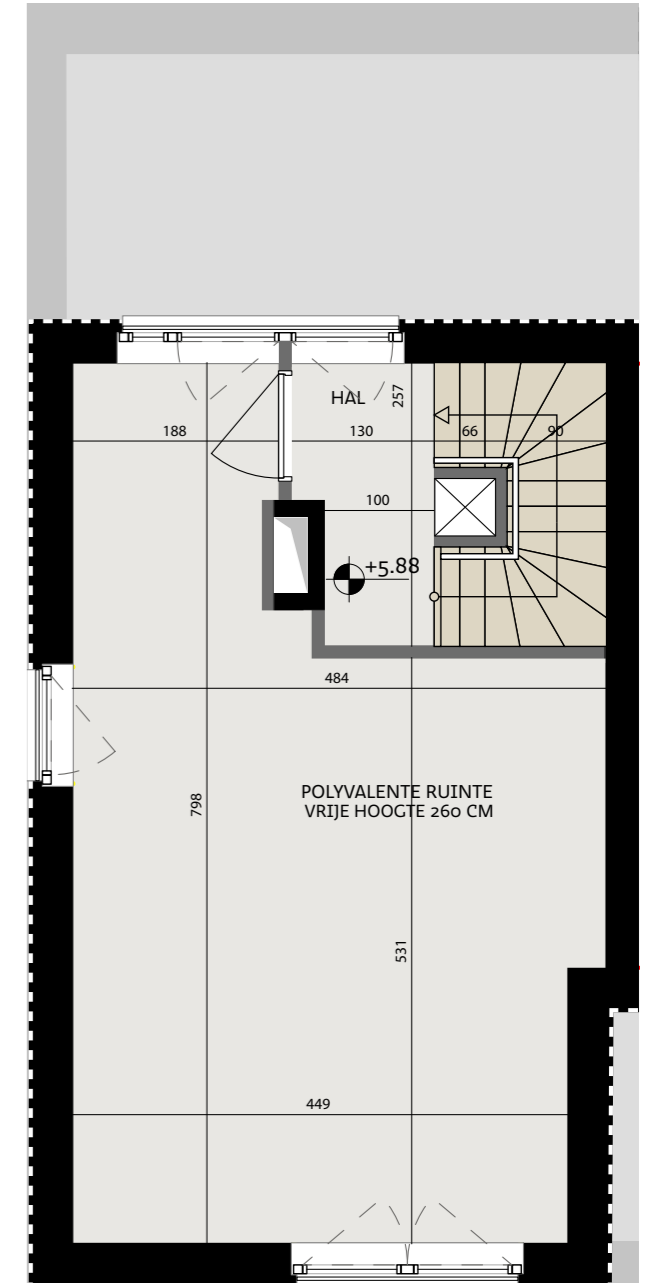
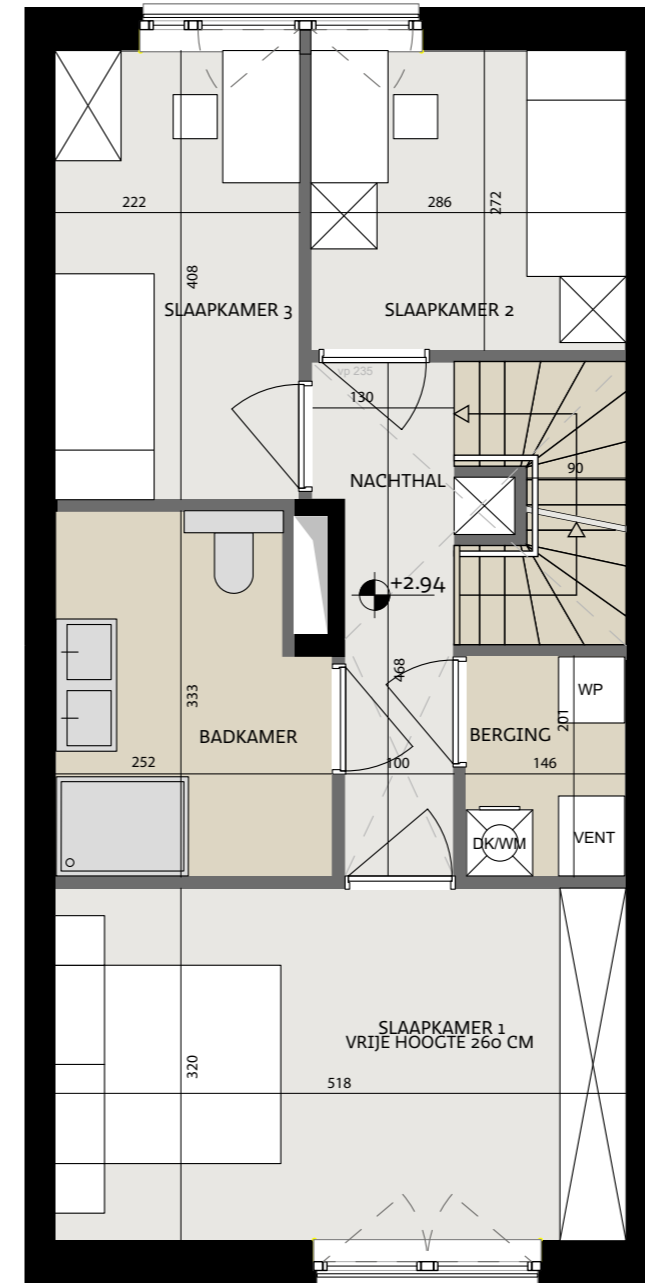
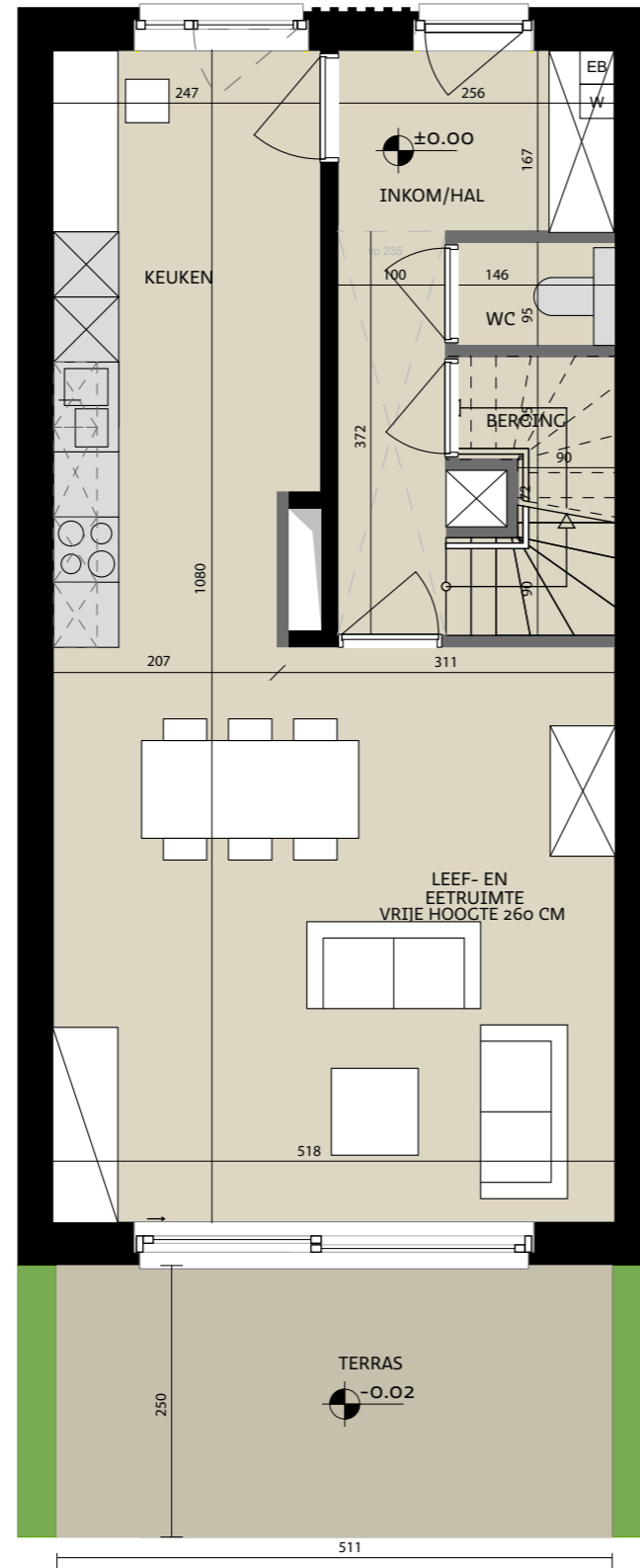


# Woning nr. 25

Type C



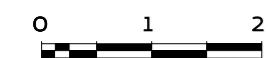
Datum:

Handtekening kopers:



Tonkinstraat 25, 9700 Oudenaarde

Bruto oppervlakte 175,20 m<sup>2</sup>  
Slaapkamers 3  
Perceel 146,36 m<sup>2</sup>



Voorraanzicht



Situeringsplan



Projectontwikkelaar  
**steenoven**



ALHEEMBOUW

Kwadestraat 149a bus 3.1  
8800 Roeselare

Architect

**WES**

Edmond Blockstraat 9  
9050 Gentbrugge