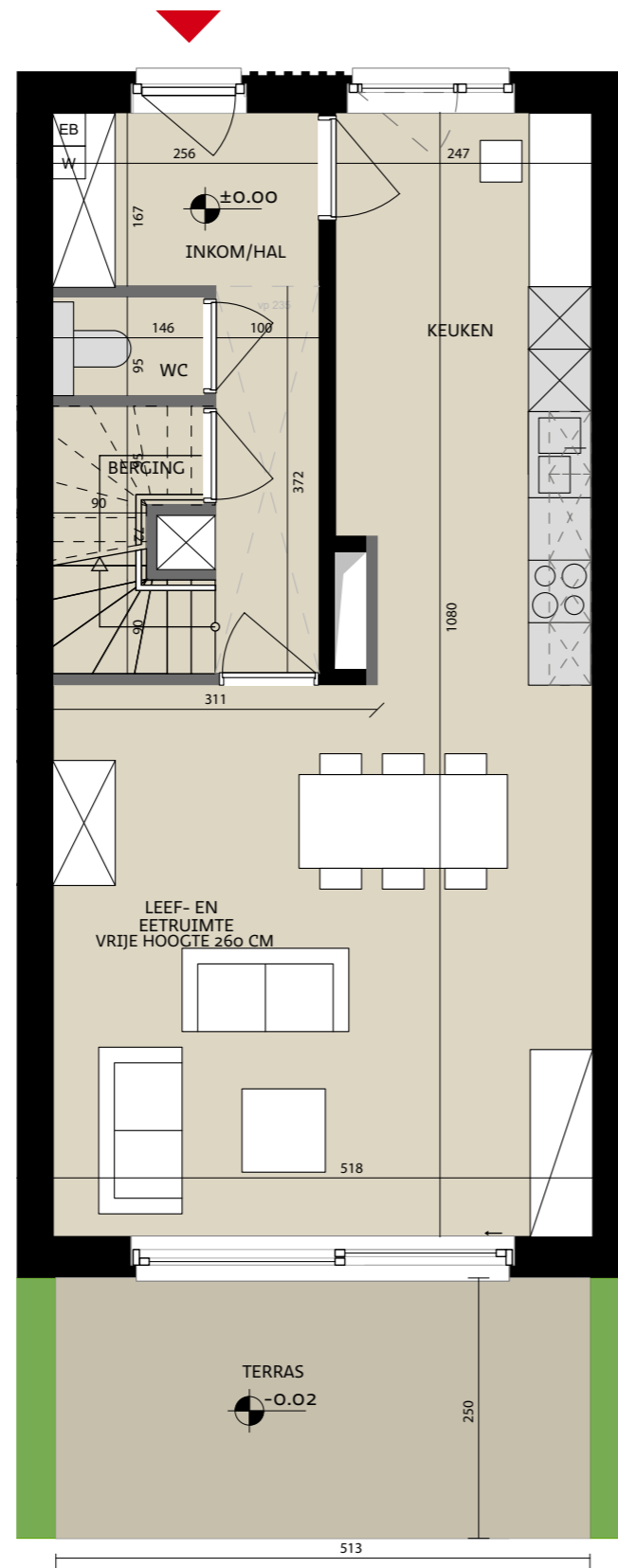
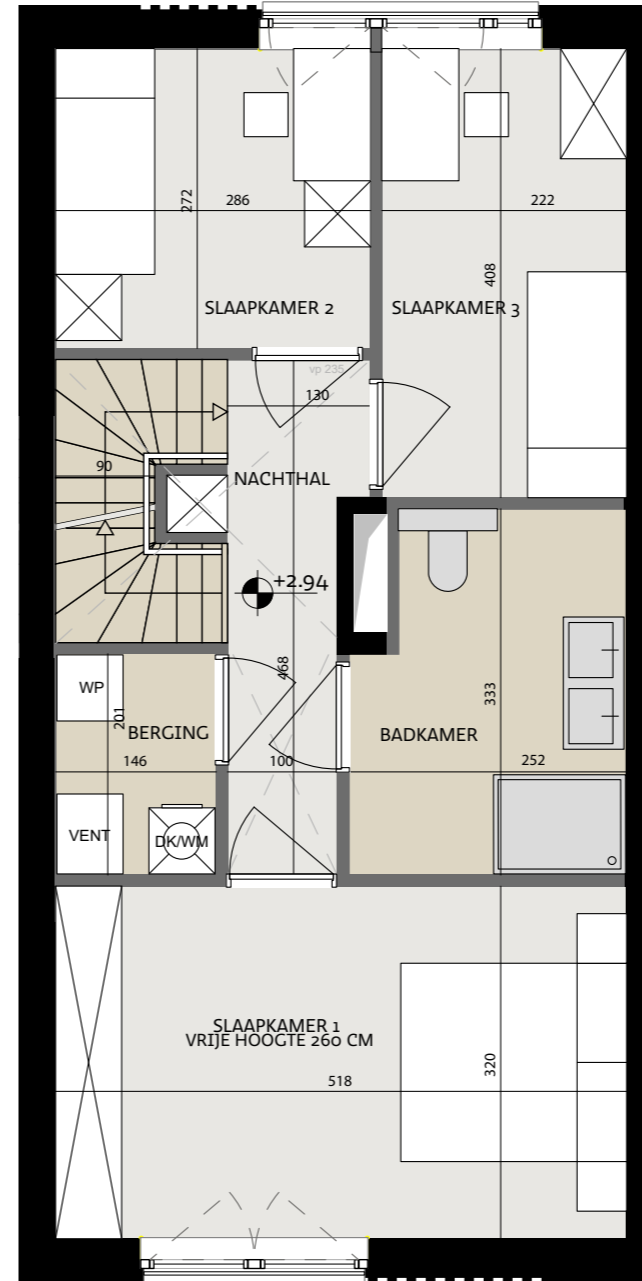


# Woning nr. 24

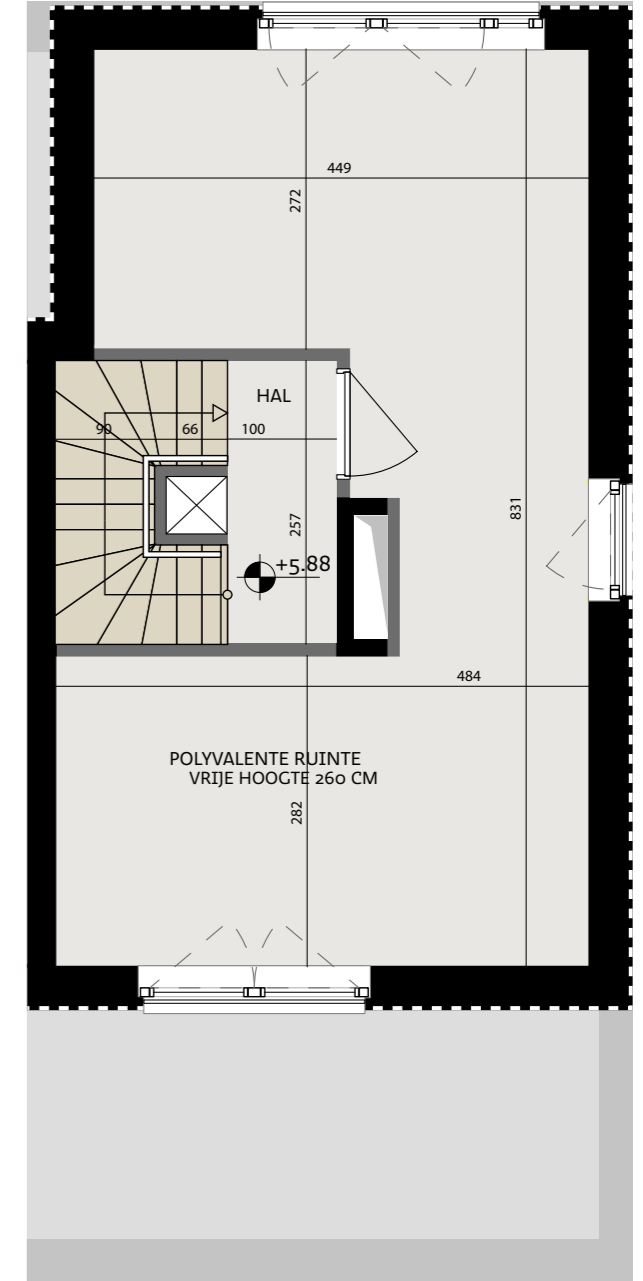
## Type C



Voor aanzicht



Situering plan

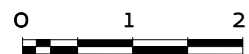


Datum: \_\_\_\_\_  
 Handtekening kopers: \_\_\_\_\_



Tonkinstraat 24, 9700 Oudenaarde

Bruto oppervlakte 176,90 m<sup>2</sup>  
 Slaapkamers 3  
 Perceel 148,19 m<sup>2</sup>



Projectontwikkelaar  
**steenoven**



ALHEEMBOUW

Kwadestraat 149a bus 3.1  
 8800 Roeselare

Architect  
**WES**

Edmond Blockstraat 9  
 9050 Gentbrugge