

# Woning nr. 26

Type B

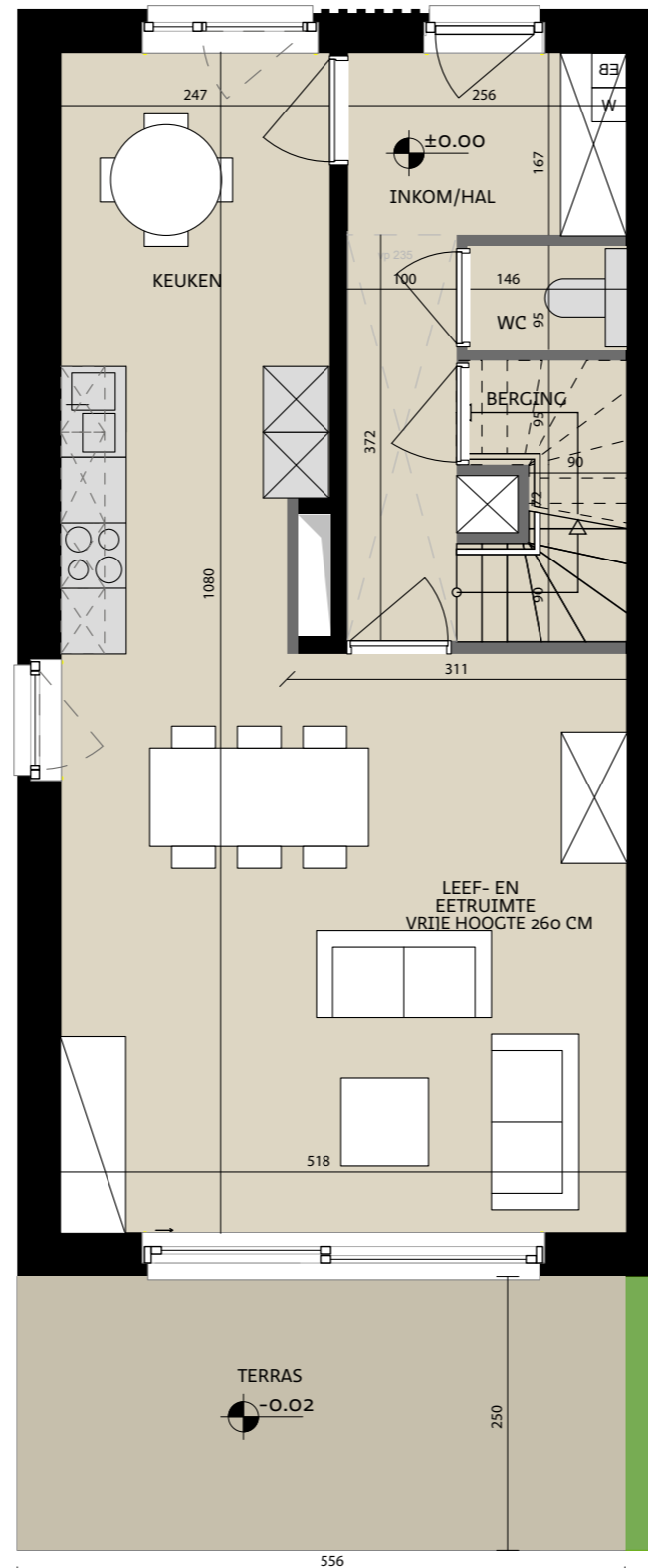
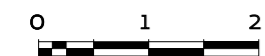
Datum:

Handtekening kopers:

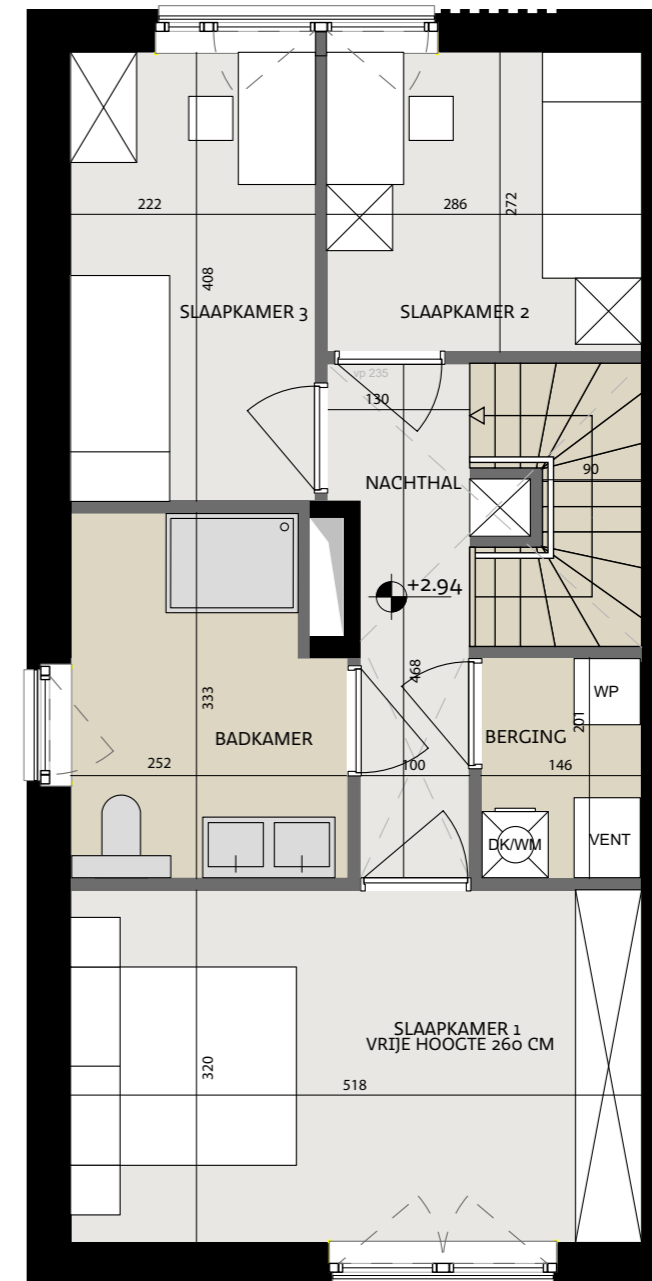


Tonkinstraat 26, 9700 Oudenaarde

Bruto oppervlakte 133,20 m<sup>2</sup>  
Slaapkamers 3  
Perceel 307,54 m<sup>2</sup>



Vooranzicht



Situeringsplan



Projectontwikkelaar  
**steenoven**



ALHEEMBOUW

Kwadestraat 149a bus 3.1  
8800 Roeselare

Architect

**WES**

Edmond Blockstraat 9  
9050 Gentbrugge