

APPARTEMENT

C13

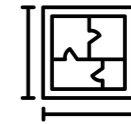
2



1



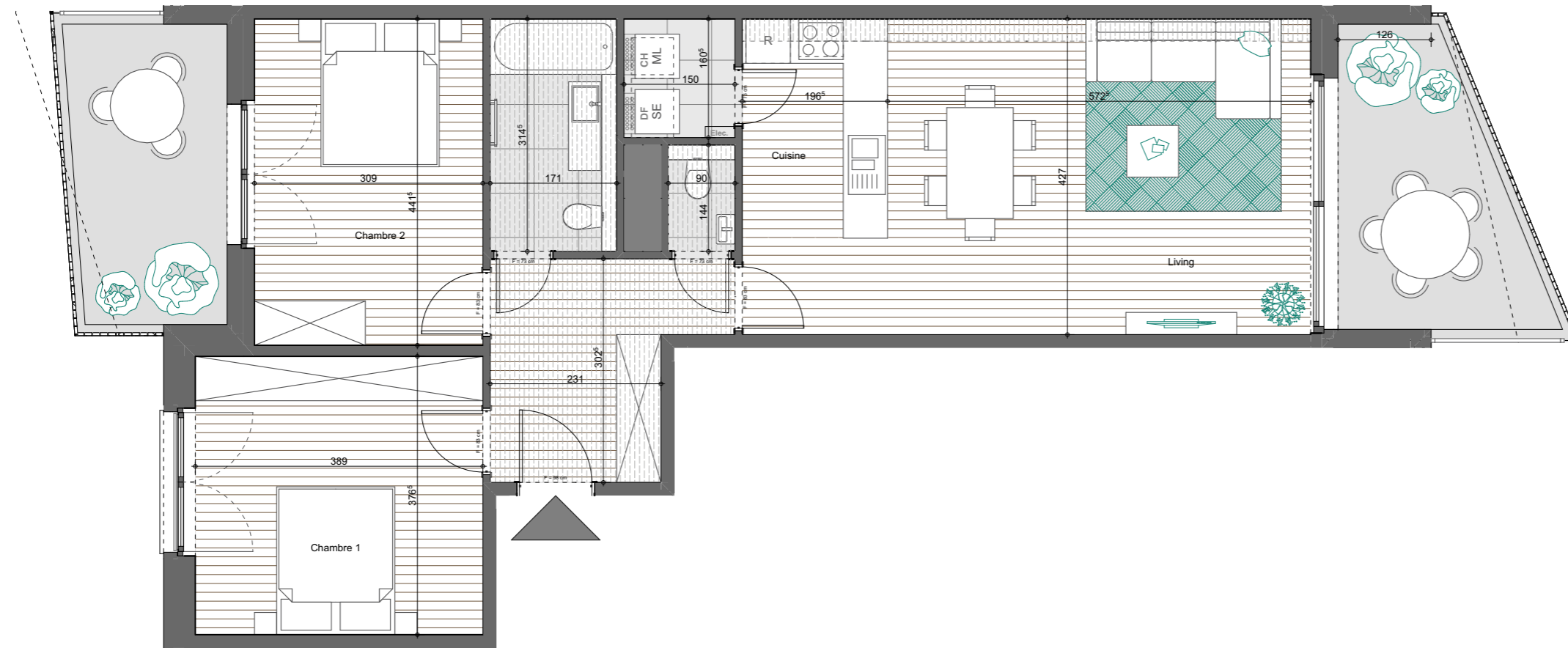
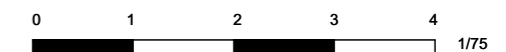
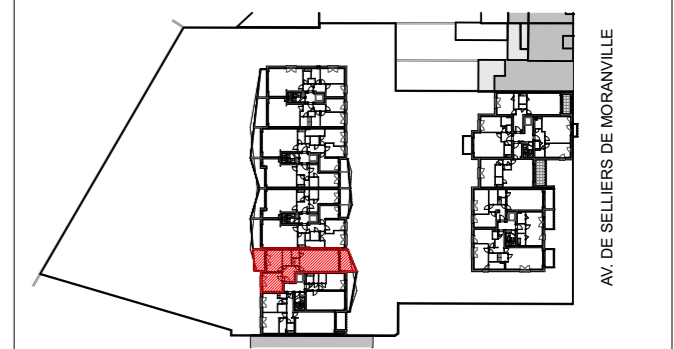
92,9 m²








19,5 m²



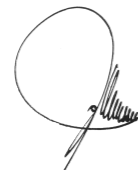
SITUATION



-  Carrelage imitation parquet
-  Faux-Plafond et soffites (220 min)
-  Carrelage 60x60 cm
-  Terrasse en dalles sur plots
-  Terrasse en klinkers



ARCHITECTES



RÉALISATION



PROJET

AVENUE DE SELLERS DE MORANVILLE

Avenue de Selliers de Moranville, 31, 1082 Berchem-Sainte-Agathe, Belgique

PLAN DE VENTE

DATE

12/04/23

ECHELLE APPARTEMENT

1/75

C13