

APPARTEMENT

B13

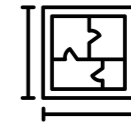
2



2



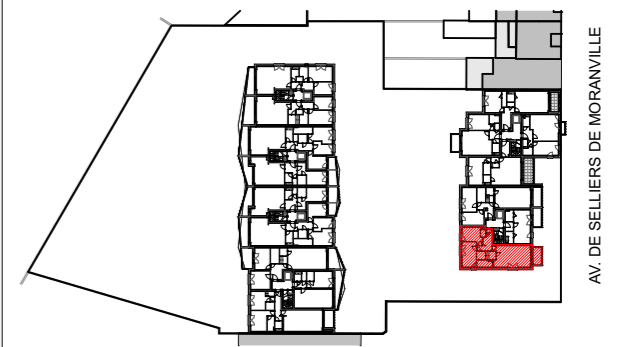
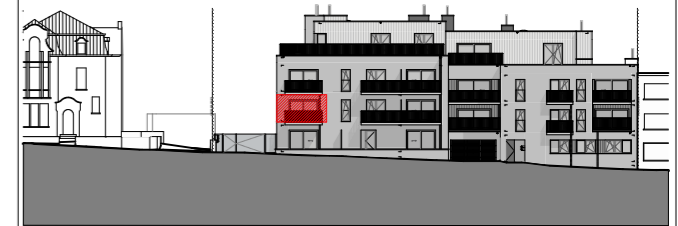
95,0 m²



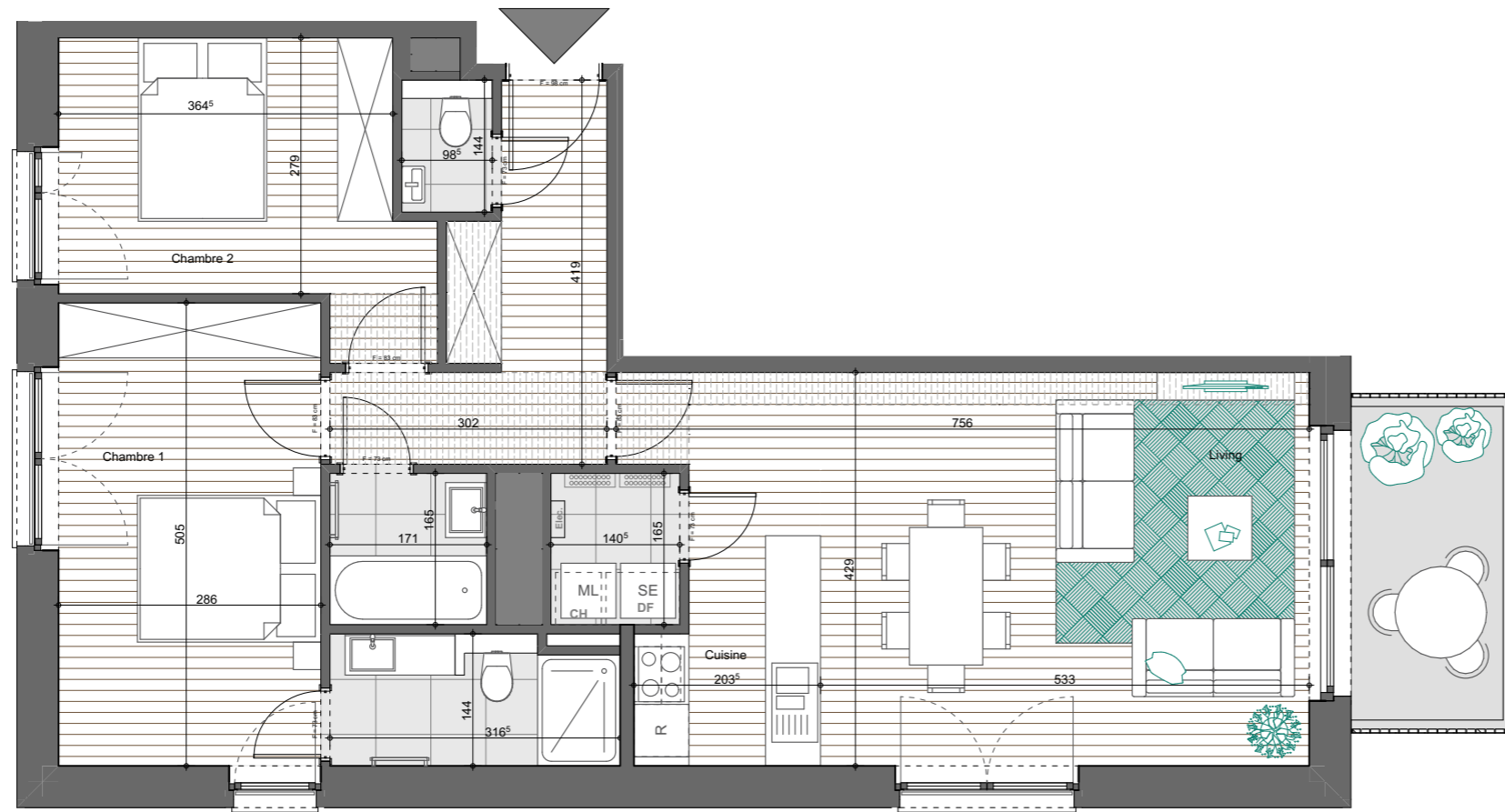
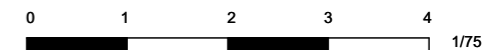
6,6 m²



SITUATION



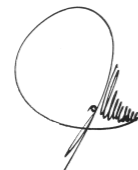
AV. DE SELLIERES DE MORANVILLE



- Carrelage imitation parquet
- Faux-Plafond et soffites (220 min)
- Carrelage 60x60 cm
- Terrasse en dalles sur plots
- Terrasse en klinkers



ARCHITECTES



RÉALISATION



PROJET

AVENUE DE SELLIERES DE MORANVILLE

Avenue de Selliers de Moranville, 31, 1082 Berchem-Sainte-Agathe, Belgique

PLAN DE VENTE

DATE

12/04/23

ECHELLE APPARTEMENT

1/75

B13