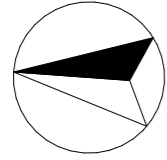


N



Drain de dispersion
S= 10,80 m²

Drain de dispersion
S= 10,80 m²

0.00

-0.50

DD1

CC

DD

0.50

Chemin d'accès
vers le n°32

Chemin d'accès
vers la propriété
de M. Belflamme

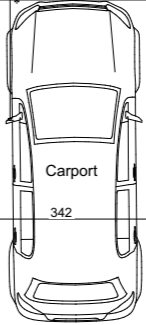
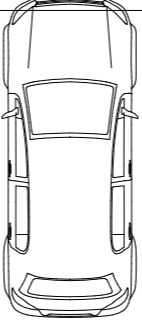
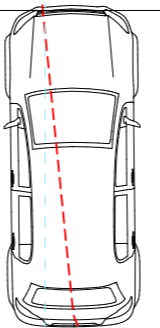
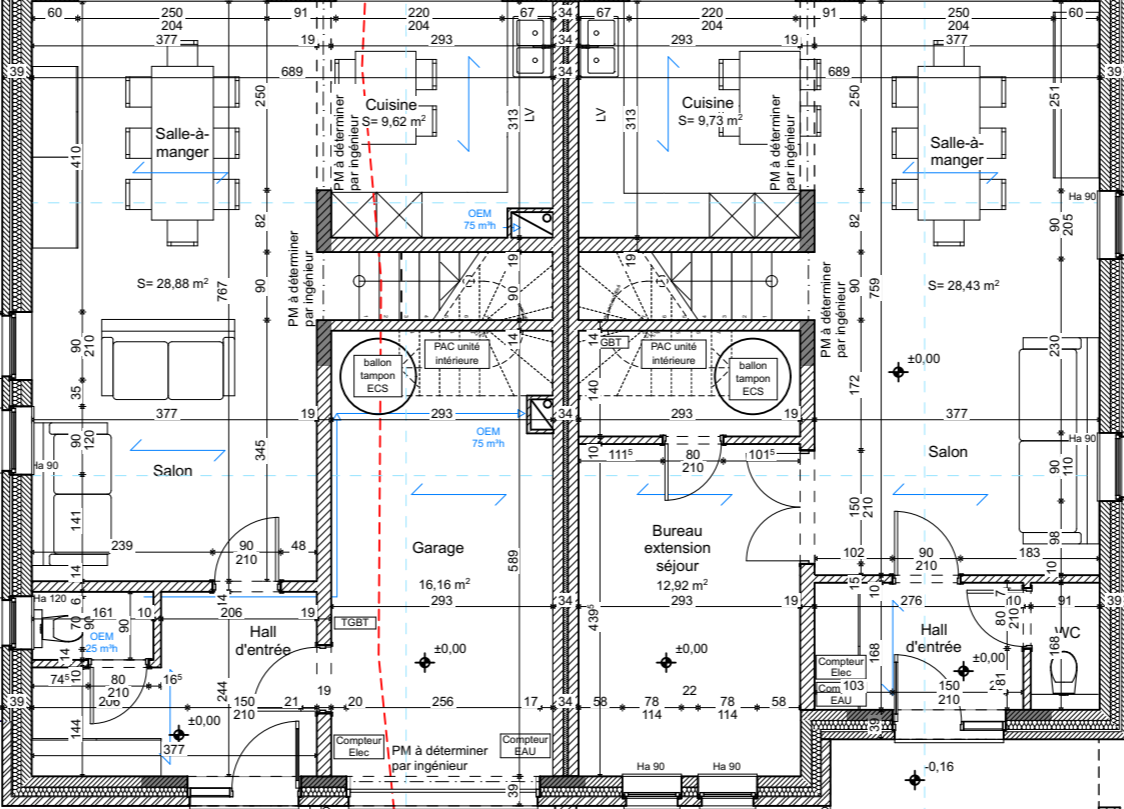
Carport

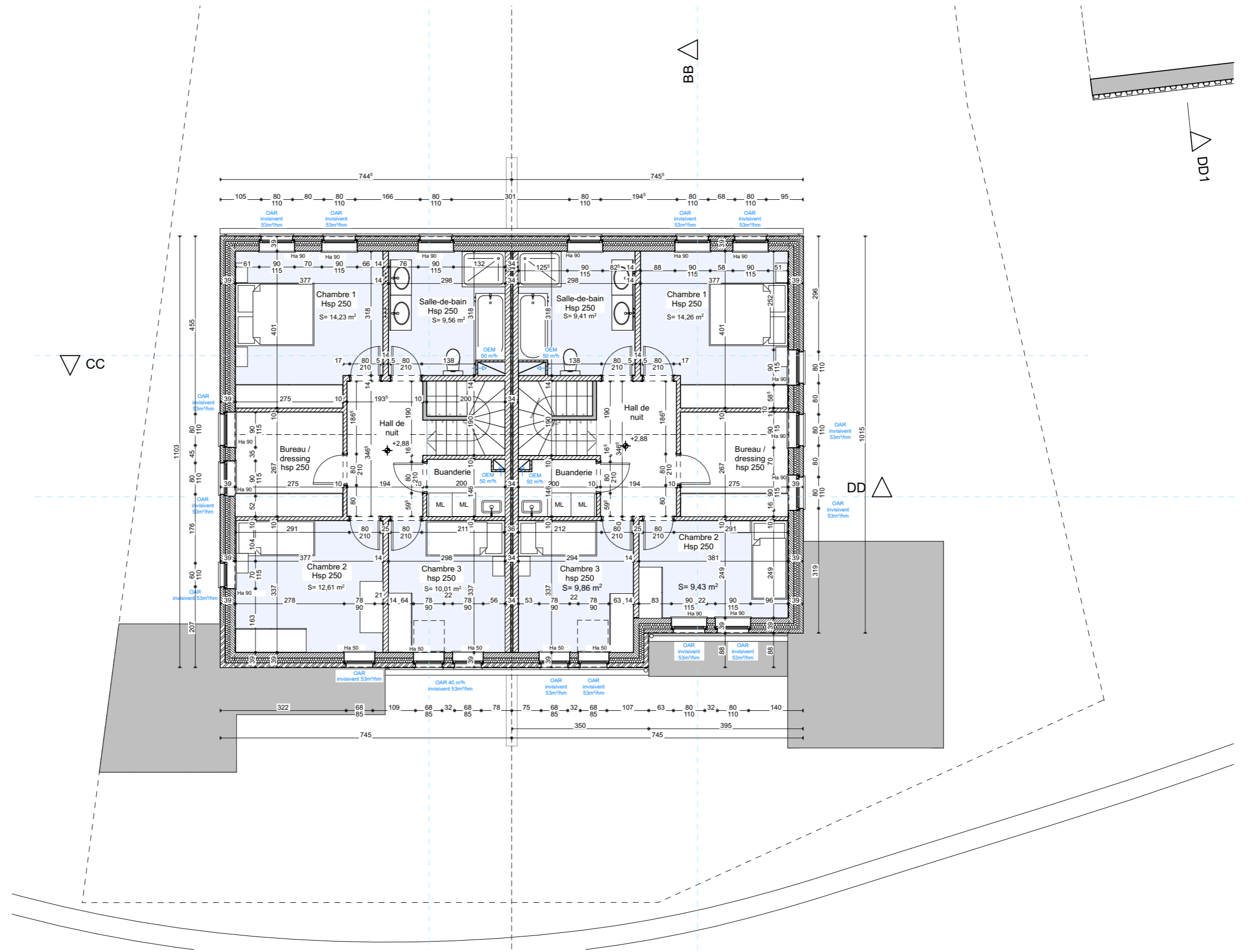
Remise

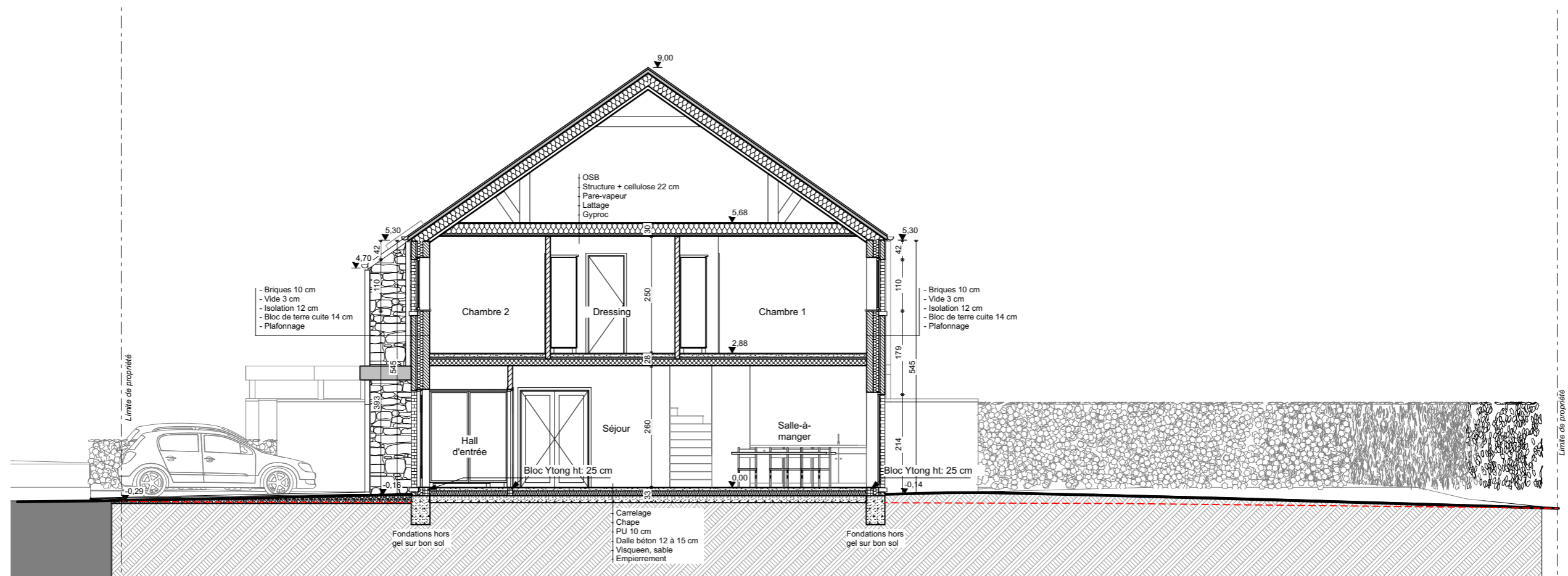
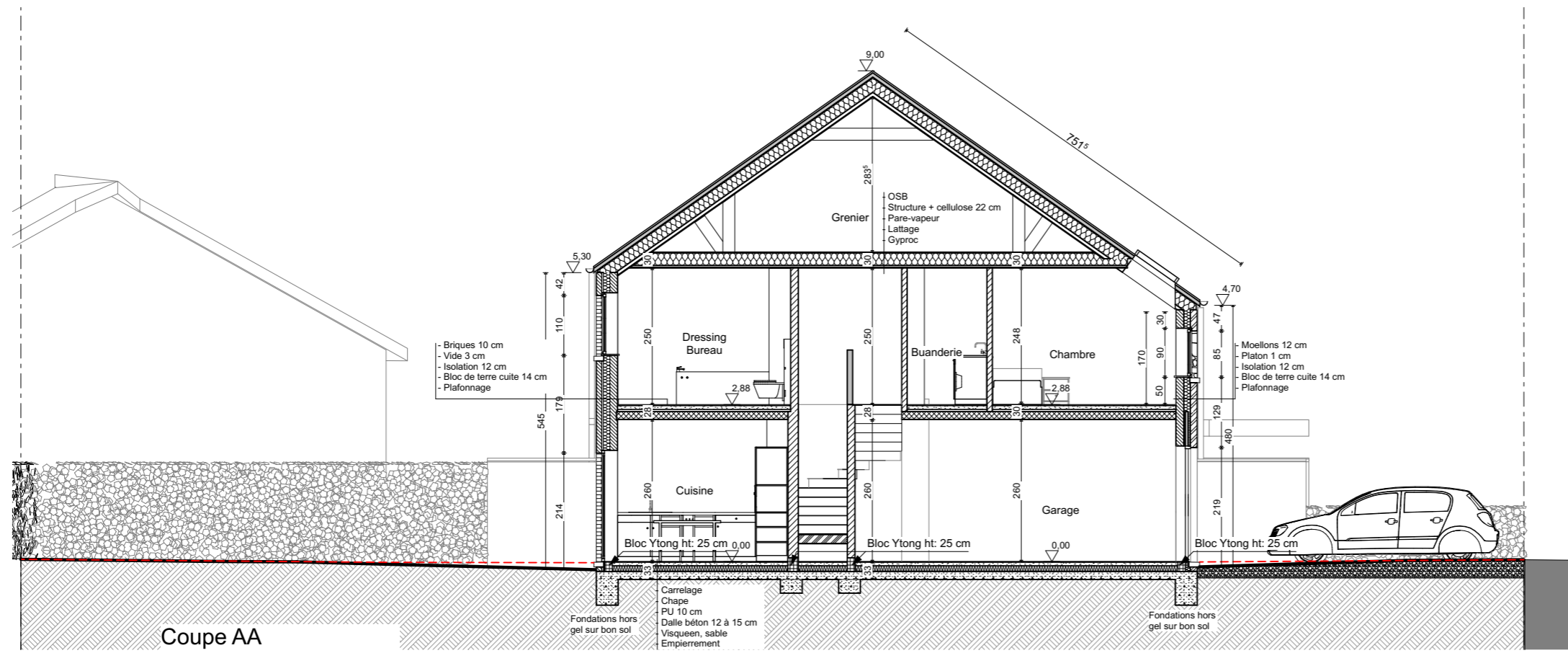
Niv. +0,17

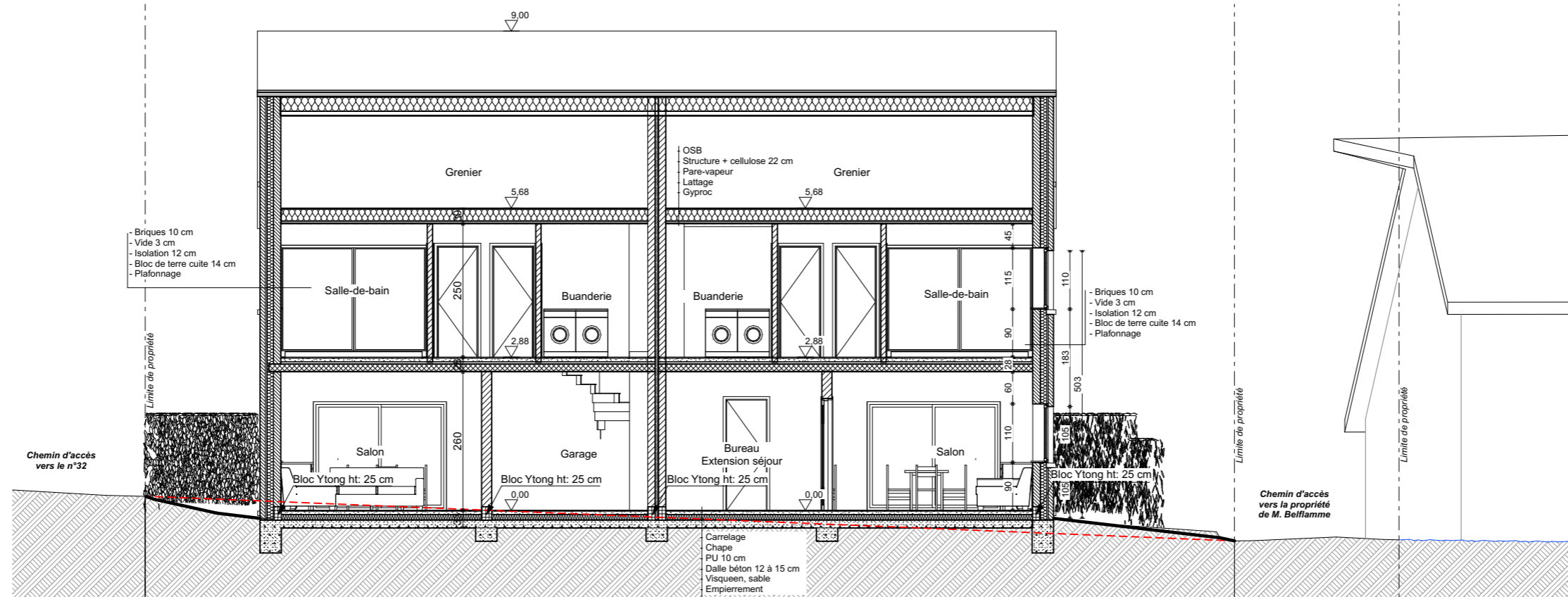
Niv. -0,24

Niv. -0,36

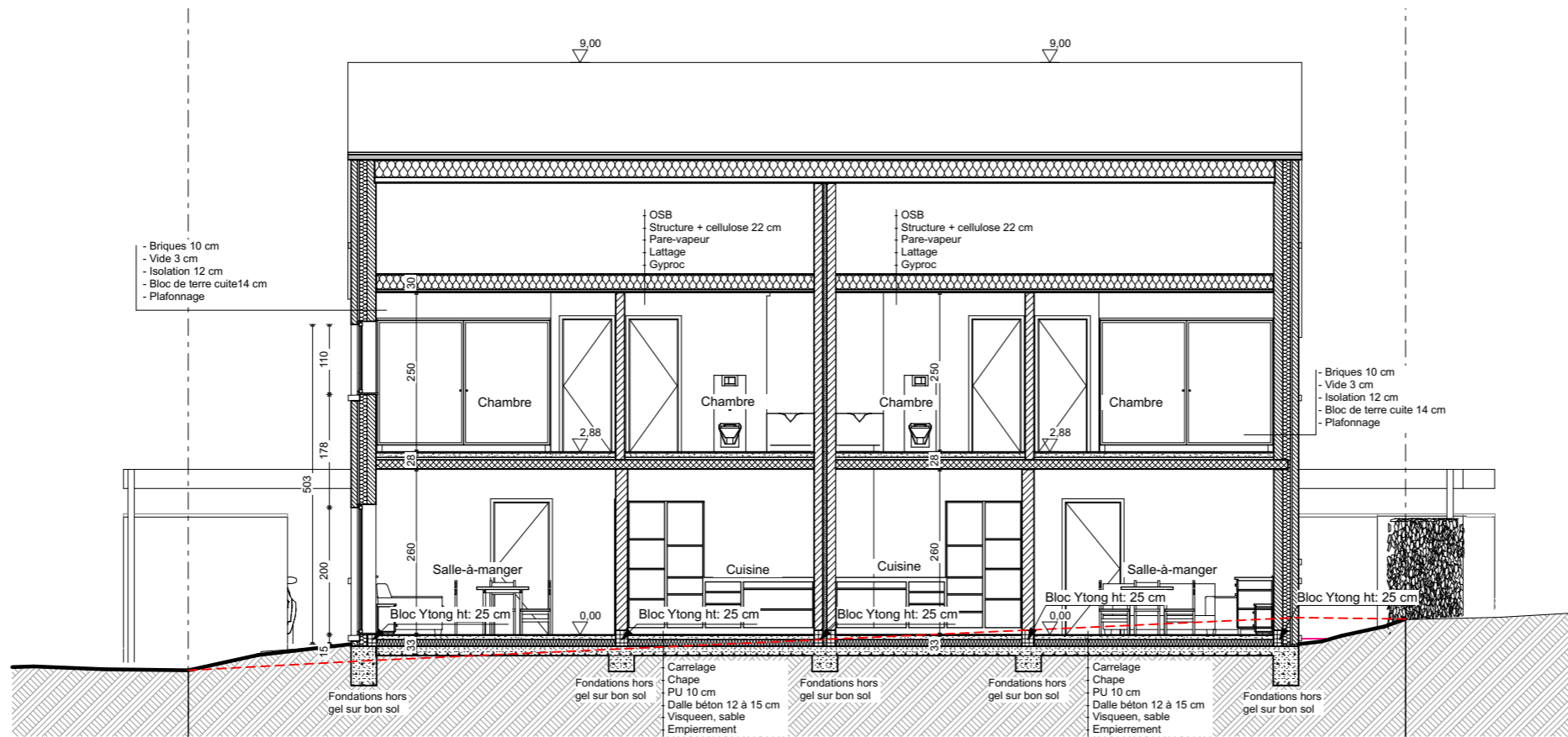






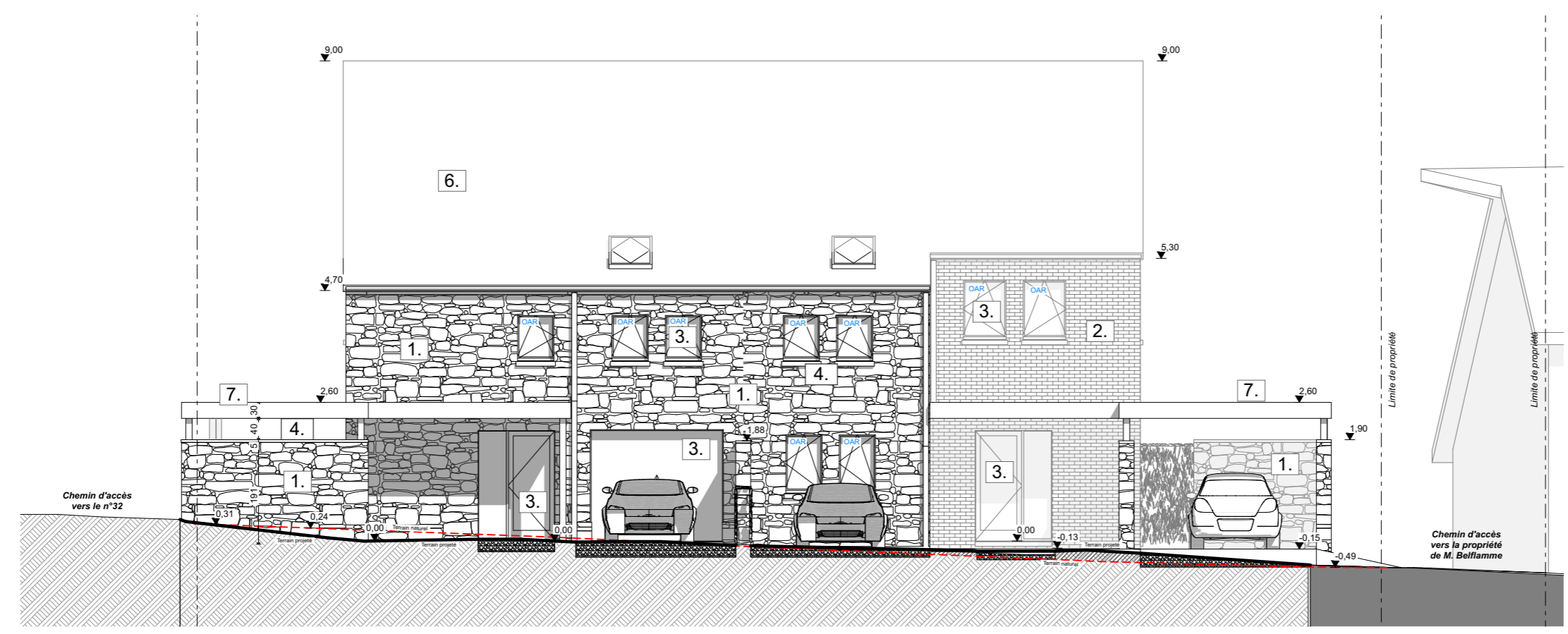
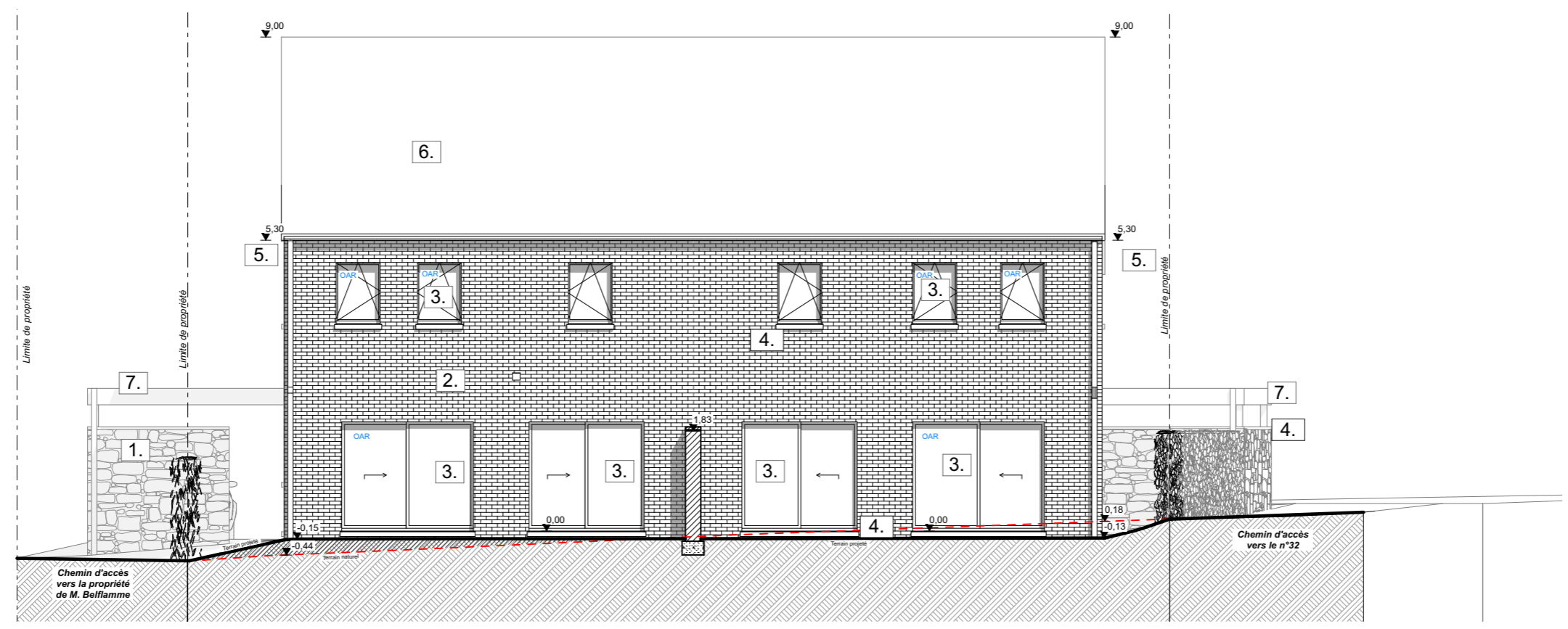


Coupe CC

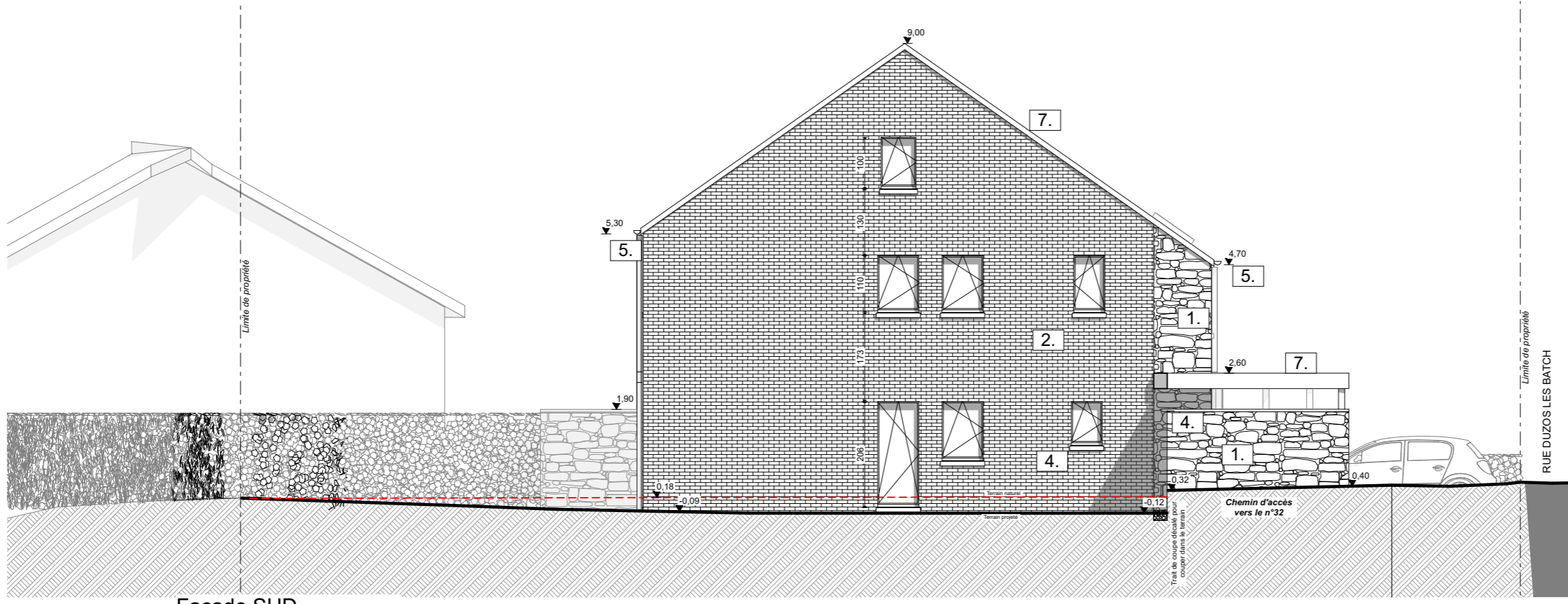


Coupe DD

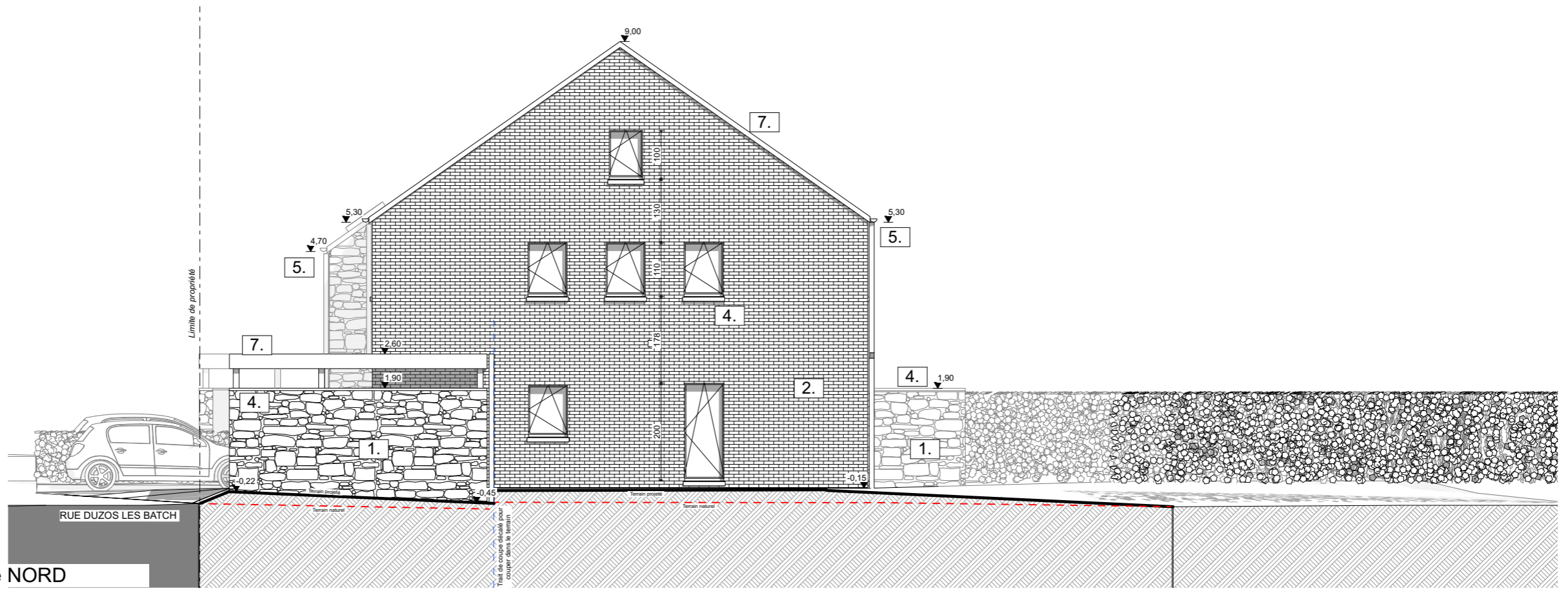
- Liste des matériaux :**
- 1 - Moellons de grès
 - 2 - Briques rouge
 - 3 - Châssis ton gris anthracite
 - 4 - Pierre de taille
 - 5 - Goutière et TD en Zinc
 - 6 - Tuiles ton gris foncé
 - 7 - Zinc quartz
 - 8 - Colonne RAL 7009



- Liste des matériaux :**
- 1 - Moellons de grès
 - 2 - Briques rouge
 - 3 - Châssis ton gris RAL 7009
 - 4 - Pierre de taille
 - 5 - Goutière et TD en Zinc
 - 6 - Tuiles ton gris foncé
 - 7 - Zinc quartz
 - 8 - Colonne RAL 7009



Façade SUD



Façade NORD



