



APPARTEMENT
4.2

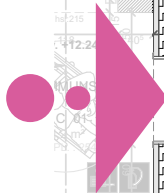
ÉTAGE
4

SURFACE BRUTE
116,81 M²

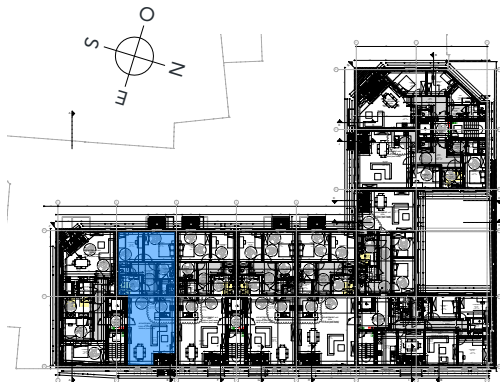
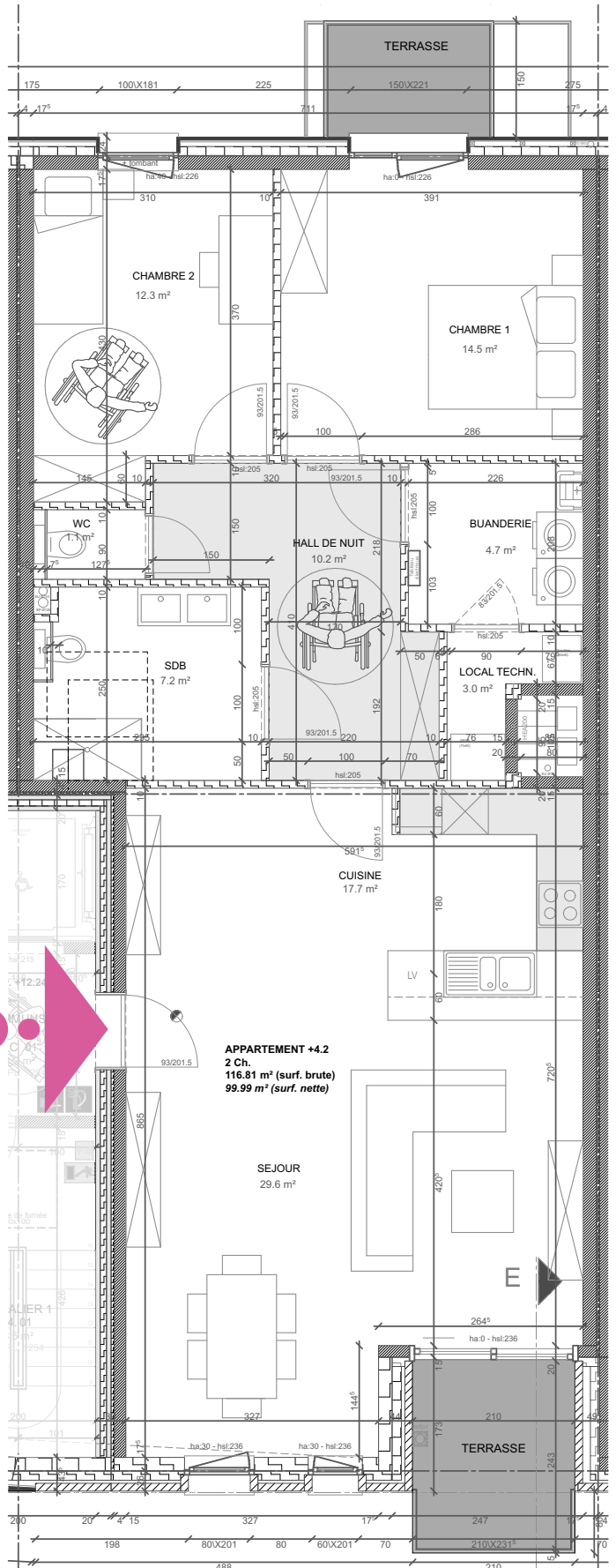
CHAMBRES
2

TERRASSE / BALCON
8,40 M²

ENTRÉE



APPARTEMENT +4.2
2 Ch.
116,81 m² (surf. brute)
99,99 m² (surf. nette)



RUE EUGÈNE YSAYE