

Stade COM  
06/07/23  
Transmis

MAITRE DE L'OUVRAGE :  
Thomas & Piron Bâtiment s.a.  
5, Rue Fort d'Andoy - 5100 Wierde



assar  
inclusive architecture



Jambes - Parc d'Enhaive  
BAT 2

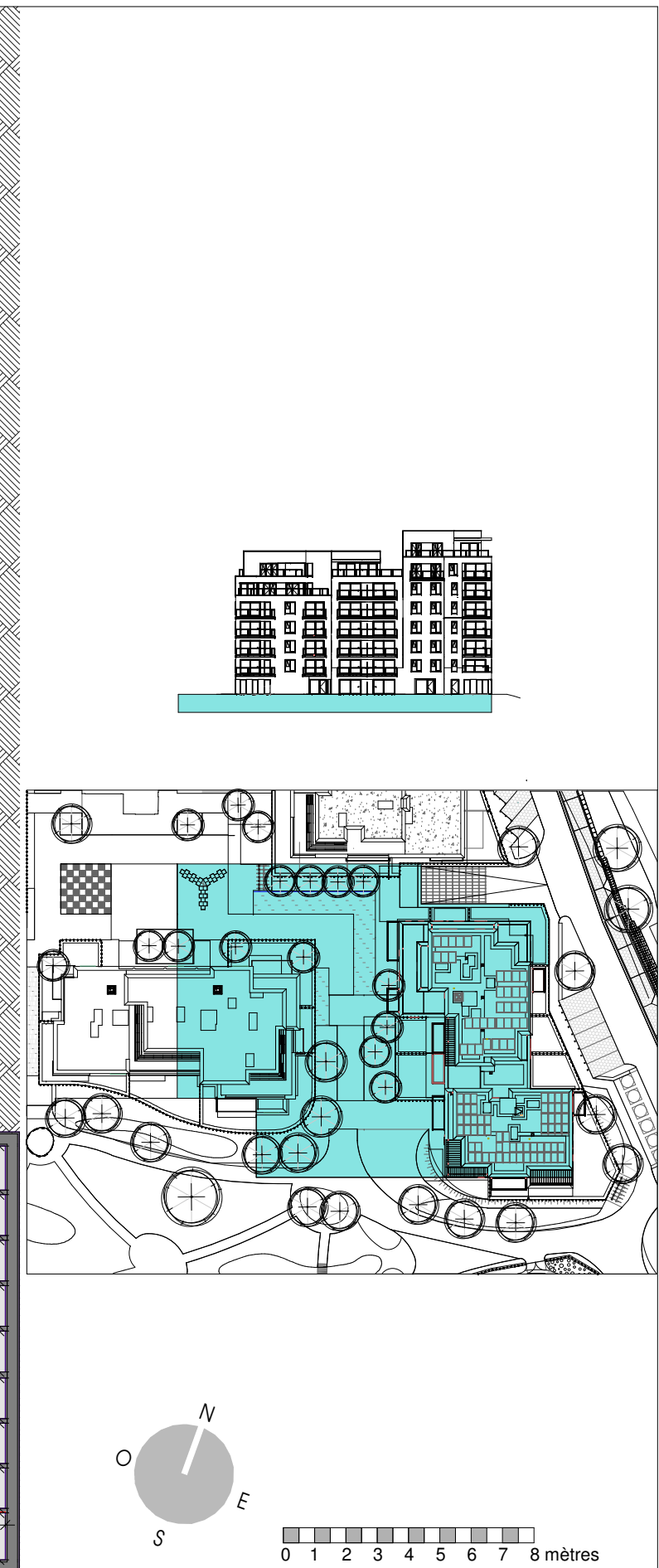
INDICE

ECHELLE  
1/300

FEUILLE  
1 / 18

Bâtiments 2 et 4 - Sous-sol

PLAN N°  
ENH-2-AR-COM-090 - G



Stade COM  
6/07/23  
Transmis

MAITRE DE L'OUVRAGE :  
Thomas & Piron Bâtiment s.a.  
5, Rue Fort d'Andoy - 5100 Wierde

FEUILLE  
2 / 18



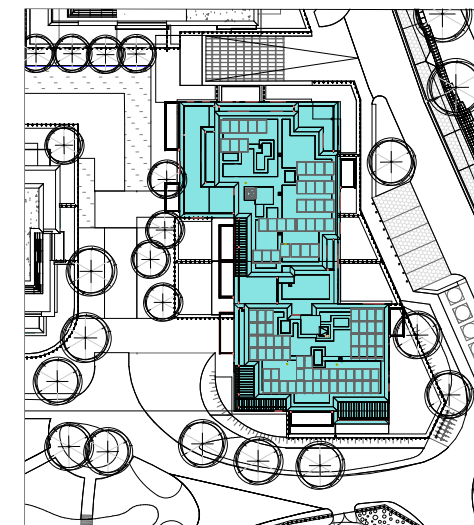
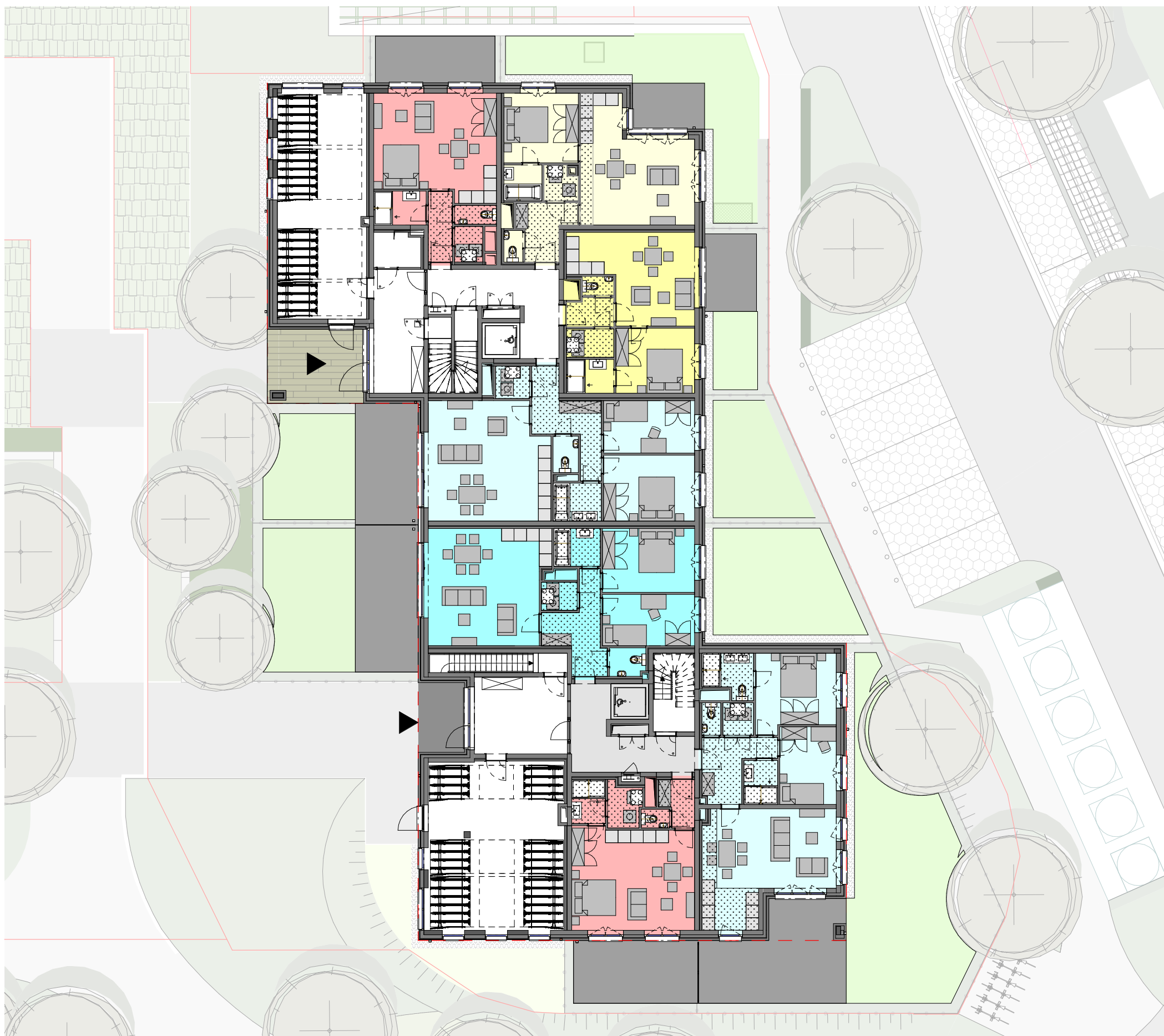
Jambes - Parc d'Enhaive  
BAT 2

Bloc A et B - Sous-sol

INDICE

ECHELLE  
1/200

PLAN N°  
ENH-2-AR-COM-090



**LEGENDE**

Double-flux  
 Faux-plafond

0 1 2 3 4 5 6 7 8 mètres

Stade COM  
06/07/23  
Transmis

MAITRE DE L'OUVRAGE :  
Thomas & Piron Bâtiment s.a.  
5, Rue Fort d'Andoy - 5100 Wierde



Jambes - Parc d'Enhaive  
BAT 2

INDICE

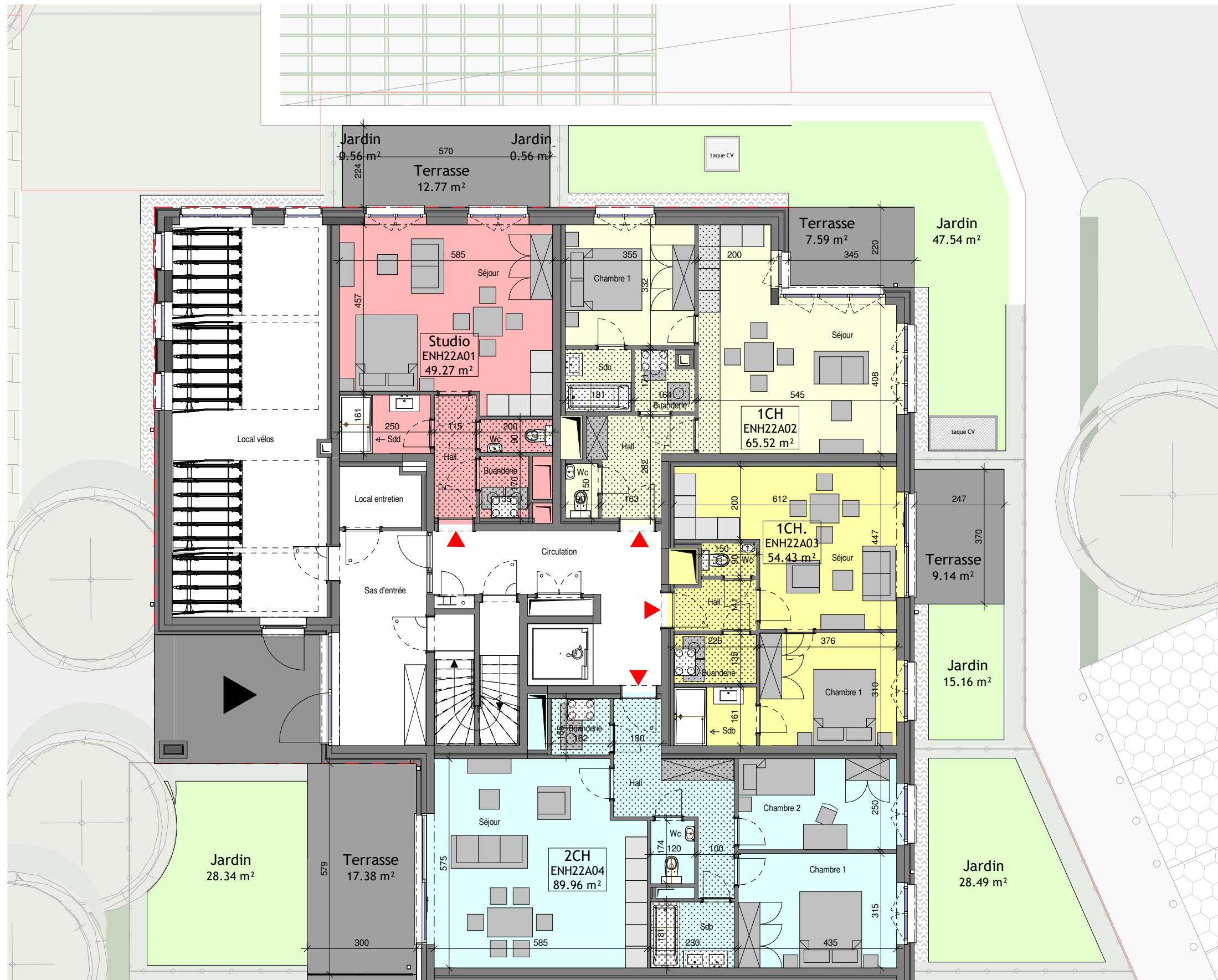
ECHELLE

1/200

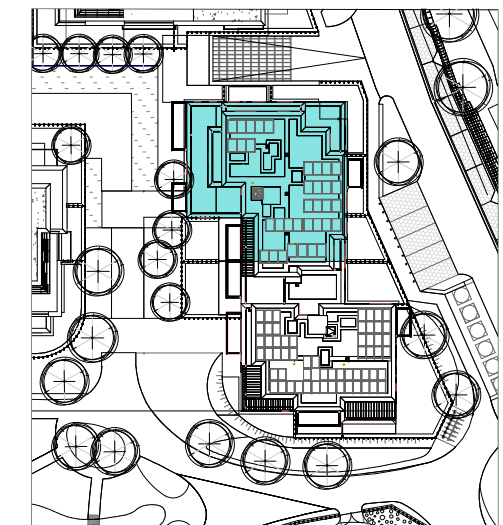
FEUILLE  
3 / 18

Bloc A et B - Rez-de-chaussée

PLAN N°  
ENH-2-AR-COM-100-AB



Unité	Nbre CH.	Surface (+/-m2)
ENH22A01	Studio	49.27 m <sup>2</sup>
	Terrasse	12.77 m <sup>2</sup>
	Jardin	1.12 m <sup>2</sup>
ENH22A02	1CH	65.52 m <sup>2</sup>
	Terrasse	7.59 m <sup>2</sup>
	Jardin	47.54 m <sup>2</sup>
ENH22A03	1CH.	54.43 m <sup>2</sup>
	Terrasse	9.14 m <sup>2</sup>
	Jardin	15.16 m <sup>2</sup>
ENH22A04	2CH	89.96 m <sup>2</sup>
	Terrasse	17.38 m <sup>2</sup>
	Jardin	56.84 m <sup>2</sup>



**LEGENDE**

Double-flux  
 Faux-plafond

Stade COM  
06/07/23  
Transmis

MAITRE DE L'OUVRAGE :  
Thomas & Piron Bâtiment s.a.  
5, Rue Fort d'Andoy - 5100 Wierde



Jambes - Parc d'Enhaive  
BAT 2

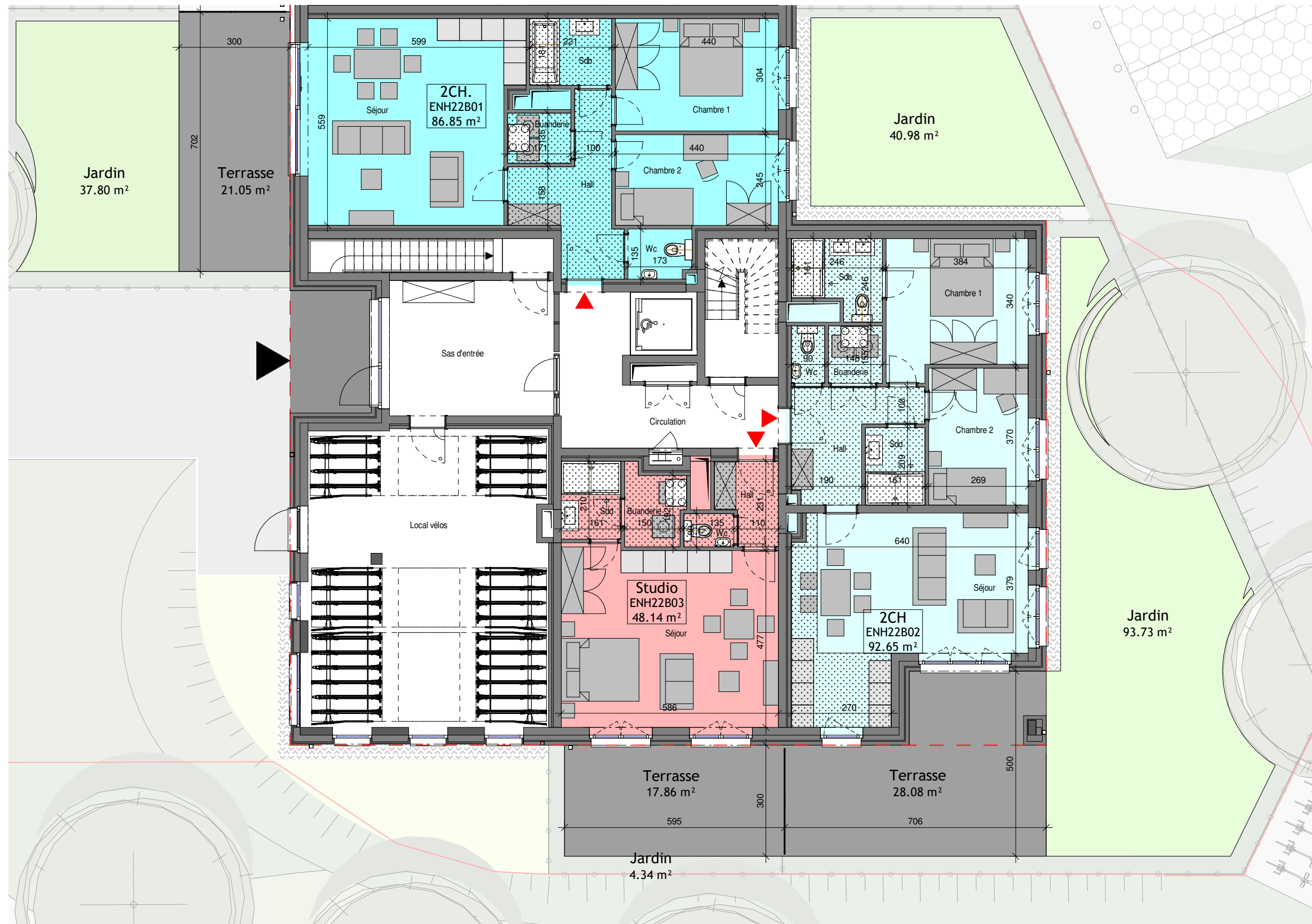
INDICE

ECHELLE  
1/115

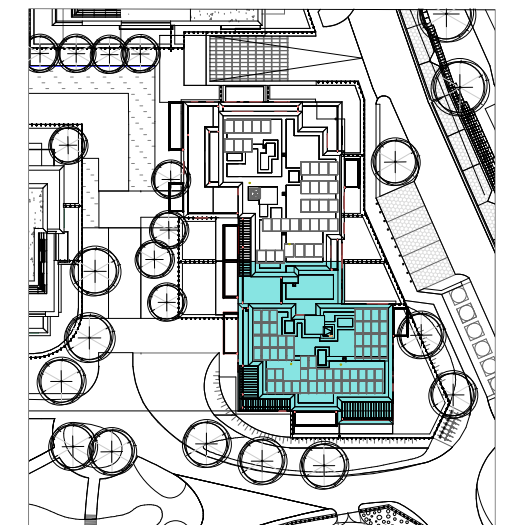
FEUILLE  
4 / 18

Bloc A - Rez-de-chaussée

PLAN N°  
ENH-2-AR-COM-100-A

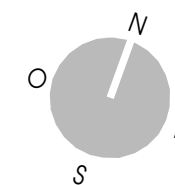


Unité	Nbre CH.	Surface (+/-m2)
ENH22B01	2CH.	86.85 m <sup>2</sup>
	Terrasse	21.05 m <sup>2</sup>
	Jardin	78.78 m <sup>2</sup>
ENH22B02	2CH	92.65 m <sup>2</sup>
	Terrasse	28.08 m <sup>2</sup>
	Jardin	93.73 m <sup>2</sup>
ENH22B03	Studio	48.14 m <sup>2</sup>
	Terrasse	17.86 m <sup>2</sup>
	Jardin	4.34 m <sup>2</sup>



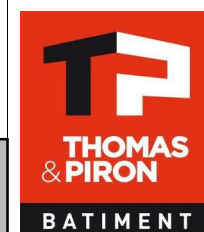
**LEGENDE**

- Double-flux
- Faux-plafond



Stade COM  
06/07/23  
Transmis

MAITRE DE L'OUVRAGE :  
Thomas & Piron Bâtiment s.a.  
5, Rue Fort d'Andoy - 5100 Wierde



**ASSAR**  
inclusive architecture



Jambes - Parc d'Enhaive  
BAT 2

INDICE

ECHELLE

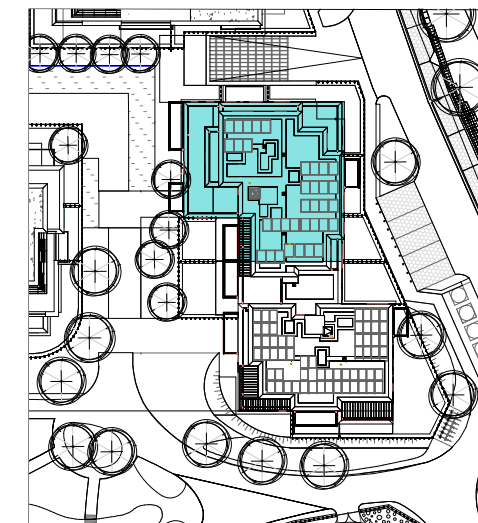
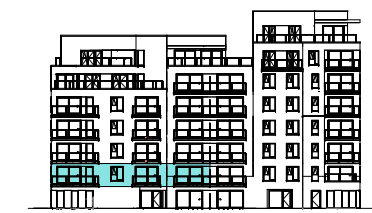
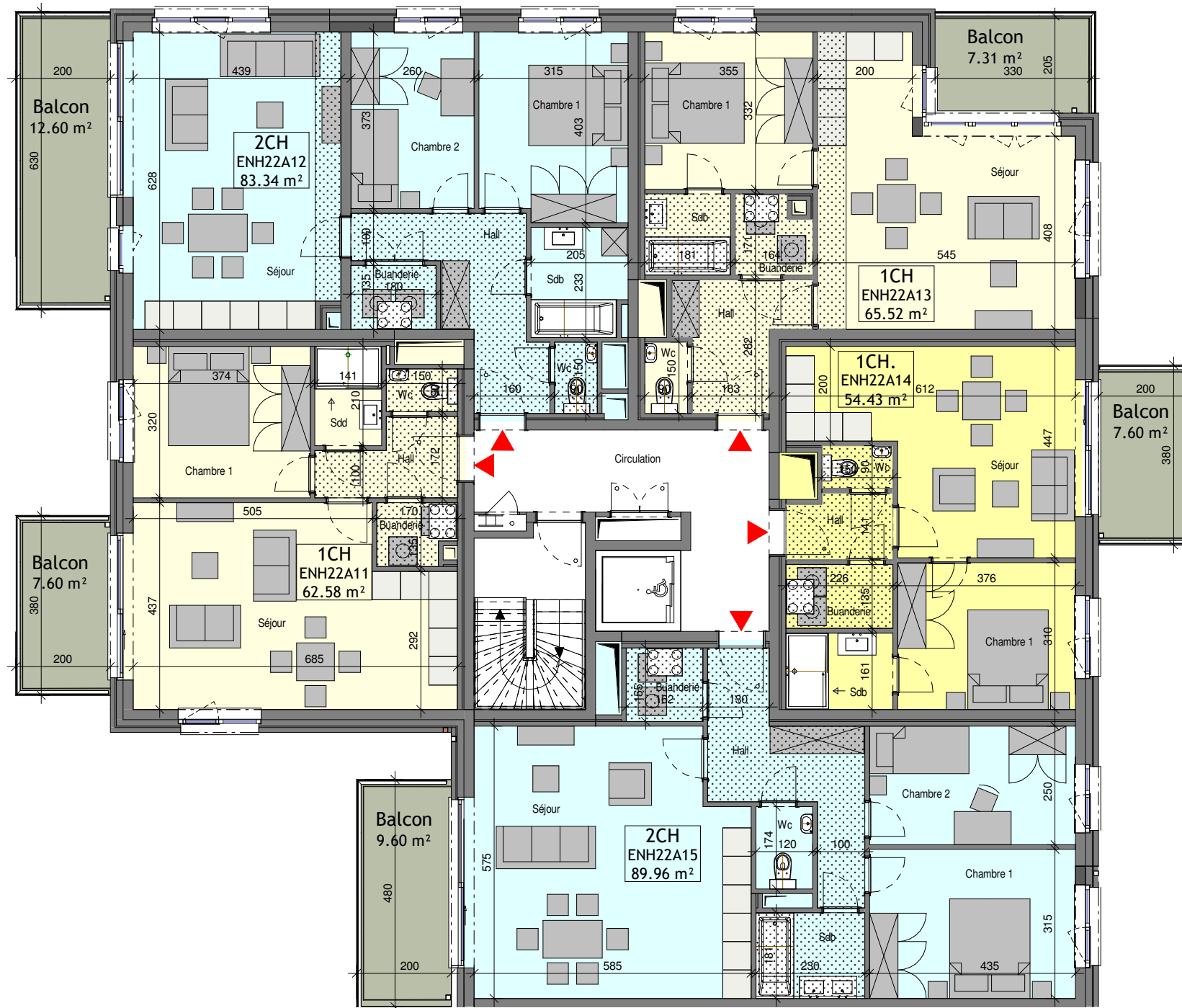
1/115

FEUILLE  
5 / 18

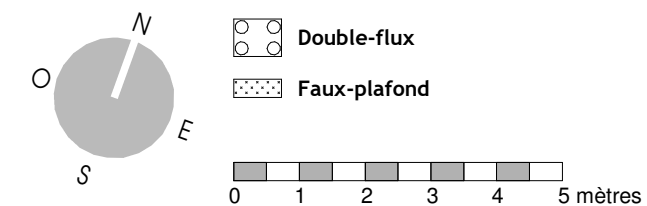
Bloc B - Rez-de-chaussée

PLAN N°  
ENH-2-AR-COM-100-B

Unité	Nbre CH.	Surface (+/-m2)
ENH22A11	1CH	62.58 m <sup>2</sup>
	Balcon	7.60 m <sup>2</sup>
ENH22A12	2CH	83.34 m <sup>2</sup>
	Balcon	12.60 m <sup>2</sup>
ENH22A13	1CH	65.52 m <sup>2</sup>
	Balcon	7.31 m <sup>2</sup>
ENH22A14	1CH.	54.43 m <sup>2</sup>
	Balcon	7.60 m <sup>2</sup>
ENH22A15	2CH	89.96 m <sup>2</sup>
	Balcon	9.60 m <sup>2</sup>

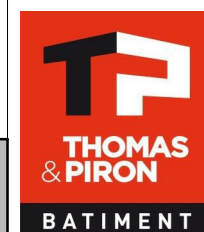


**LEGENDE**



Stade COM  
06/07/23  
Transmis

MAITRE DE L'OUVRAGE :  
Thomas & Piron Bâtiment s.a.  
5, Rue Fort d'Andoy - 5100 Wierde



Jambes - Parc d'Enhaive  
BAT 2

INDICE

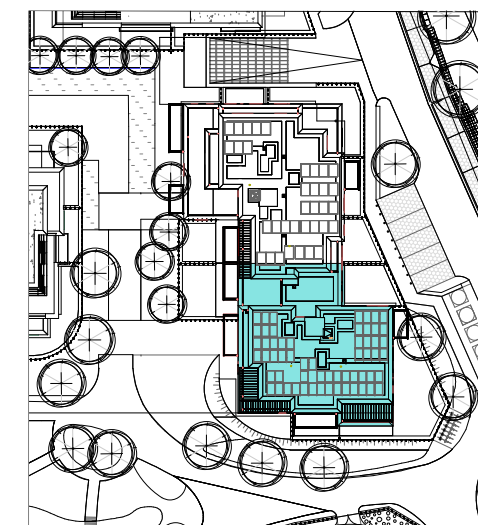
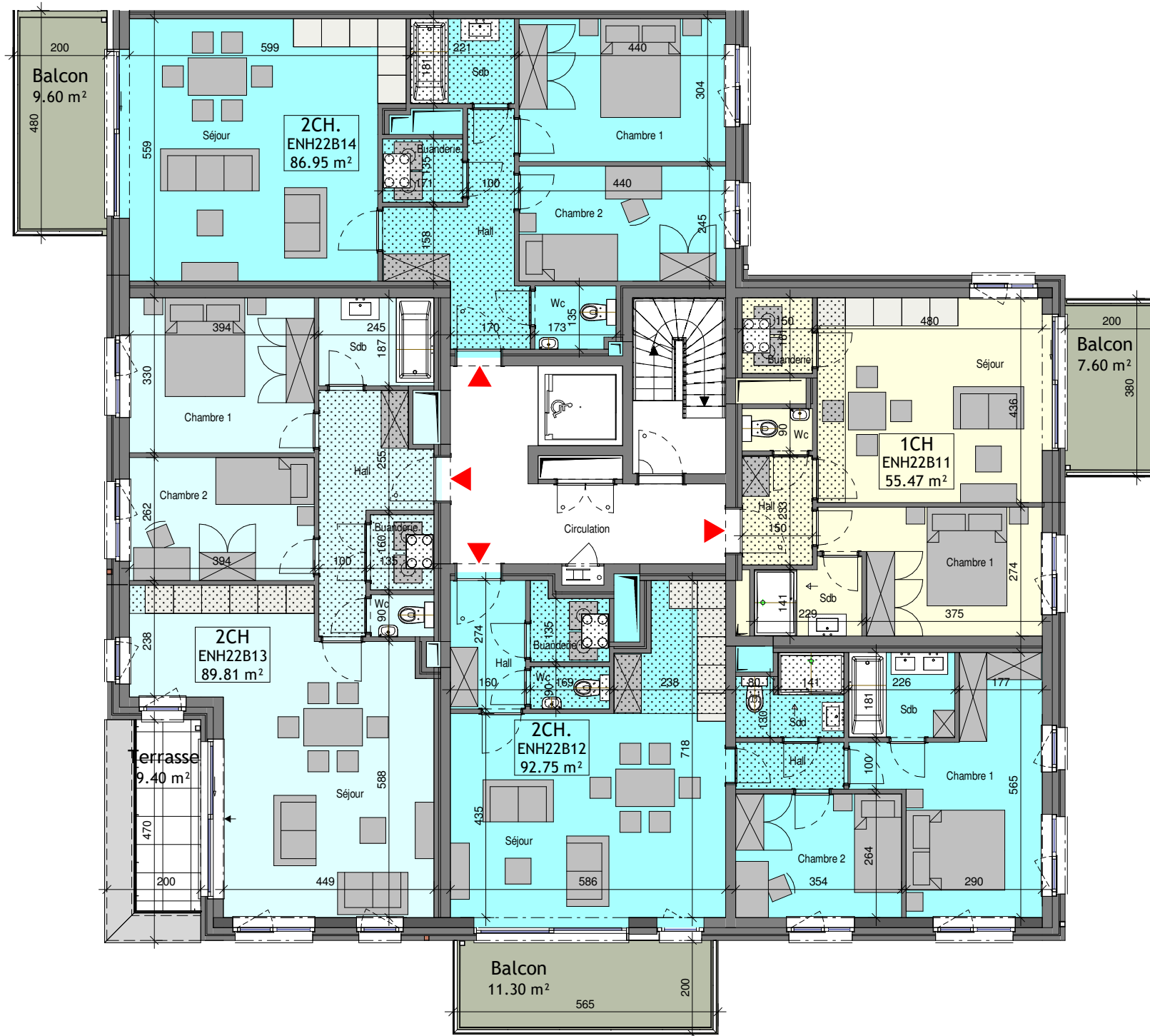
ECHELLE  
1/115

FEUILLE  
6 / 18

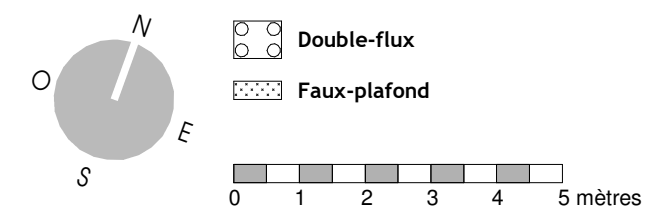
Bloc A - R+1

PLAN N°  
ENH-2-AR-COM-110-A

Unité	Nbre CH.	Surface (+/-m2)
ENH22B11	1CH	55.47 m <sup>2</sup>
	Balcon	7.60 m <sup>2</sup>
ENH22B12	2CH.	92.75 m <sup>2</sup>
	Balcon	11.30 m <sup>2</sup>
ENH22B13	2CH.	89.81 m <sup>2</sup>
	Terrasse	9.40 m <sup>2</sup>
ENH22B14	2CH.	86.95 m <sup>2</sup>
	Balcon	9.60 m <sup>2</sup>

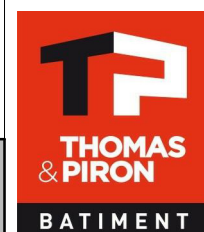


**LEGENDE**



Stade COM  
06/07/23  
Transmis

MAITRE DE L'OUVRAGE :  
Thomas & Piron Bâtiment s.a.  
5, Rue Fort d'Andoy - 5100 Wierde



Jambes - Parc d'Enhaive  
BAT 2

INDICE

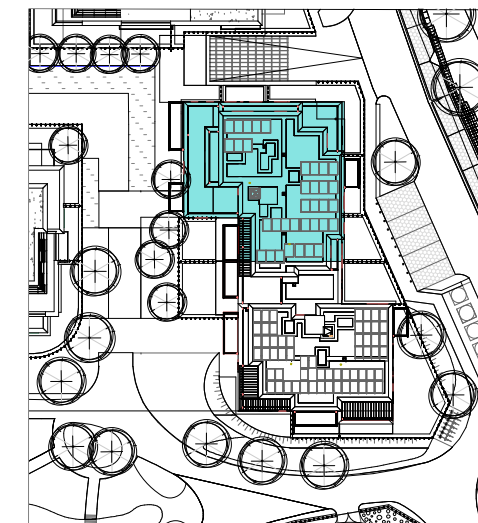
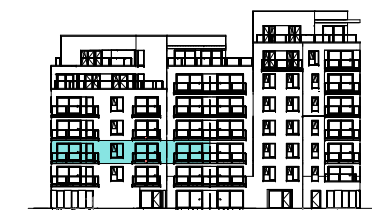
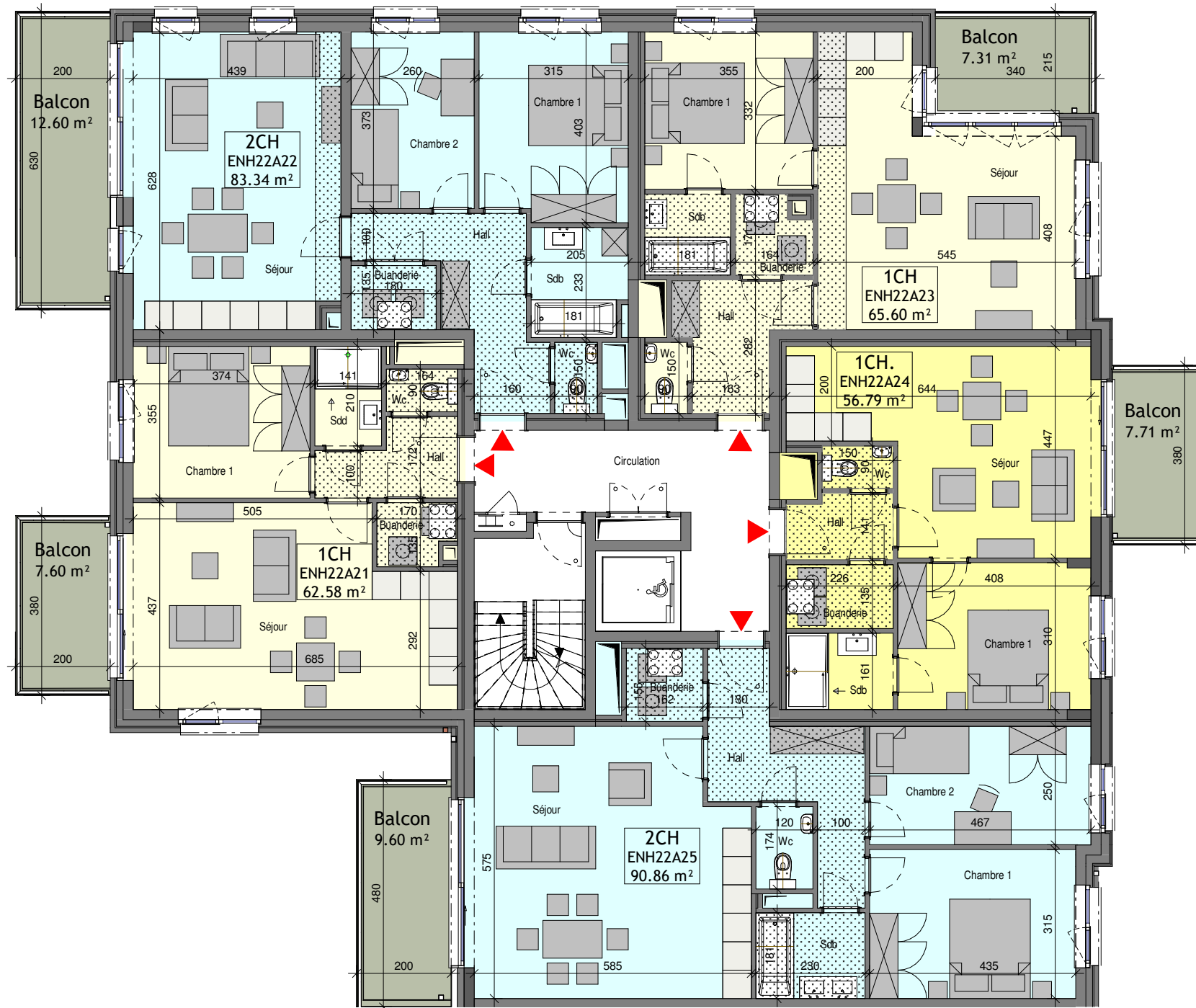
ECHELLE  
1/115

FEUILLE  
7 / 18

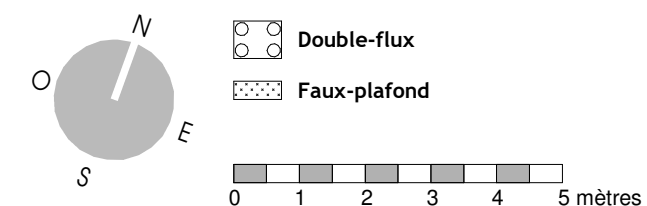
Bloc B - R+1

PLAN N°  
ENH-2-AR-COM-110-B

Unité	Nbre CH.	Surface (+/-m2)
ENH22A21	1CH	62.58 m <sup>2</sup>
	Balcon	7.60 m <sup>2</sup>
ENH22A22	2CH	83.34 m <sup>2</sup>
	Balcon	12.60 m <sup>2</sup>
ENH22A23	1CH	65.60 m <sup>2</sup>
	Balcon	7.31 m <sup>2</sup>
ENH22A24	1CH.	56.79 m <sup>2</sup>
	Balcon	7.71 m <sup>2</sup>
ENH22A25	2CH	90.86 m <sup>2</sup>
	Balcon	9.60 m <sup>2</sup>

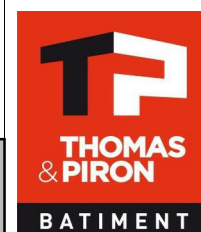


**LEGENDE**



Stade COM  
06/07/23  
Transmis

MAITRE DE L'OUVRAGE :  
Thomas & Piron Bâtiment s.a.  
5, Rue Fort d'Andoy - 5100 Wierde



Jambes - Parc d'Enhaive  
BAT 2

INDICE

ECHELLE  
1/115

FEUILLE  
8 / 18

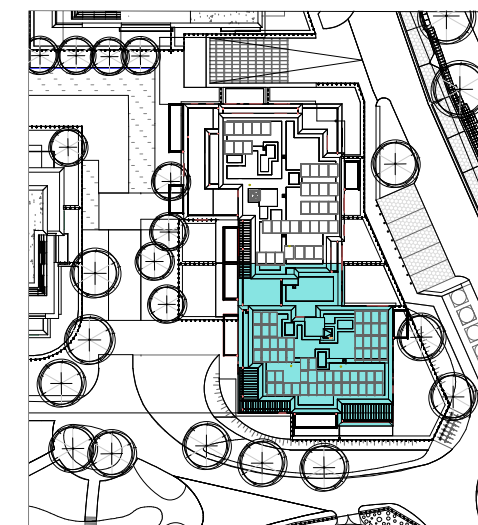
Bloc A - R+2

PLAN N°  
ENH-2-AR-COM-120-A

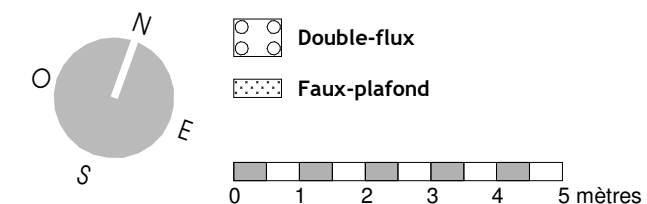




Unité	Nbre CH.	Surface (+/-m2)
ENH22B21	1CH	55.47 m <sup>2</sup>
	Balcon	7.60 m <sup>2</sup>
ENH22B22	2CH.	92.76 m <sup>2</sup>
	Balcon	11.30 m <sup>2</sup>
ENH22B23	2CH	89.82 m <sup>2</sup>
	Balcon	9.07 m <sup>2</sup>
ENH22B24	2CH.	86.95 m <sup>2</sup>
	Balcon	9.60 m <sup>2</sup>

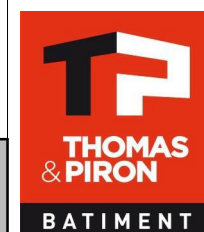


**LEGENDE**



Stade COM  
06/07/23  
Transmis

MAITRE DE L'OUVRAGE :  
Thomas & Piron Bâtiment s.a.  
5, Rue Fort d'Andoy - 5100 Wierde



Jambes - Parc d'Enhaive  
BAT 2

INDICE

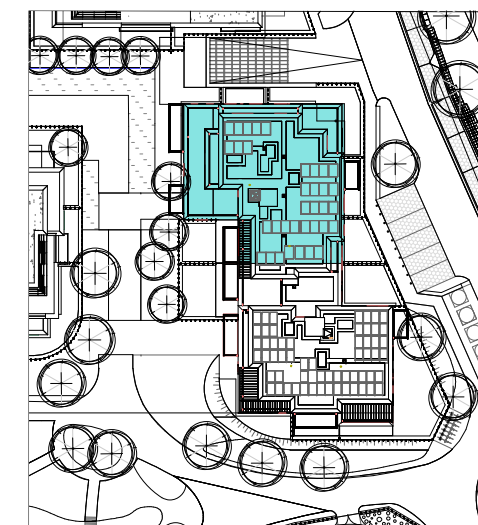
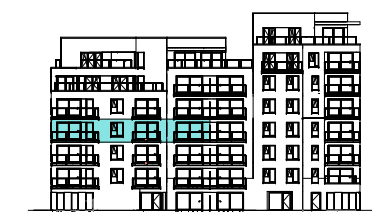
ECHELLE  
1/115

FEUILLE  
9 / 18

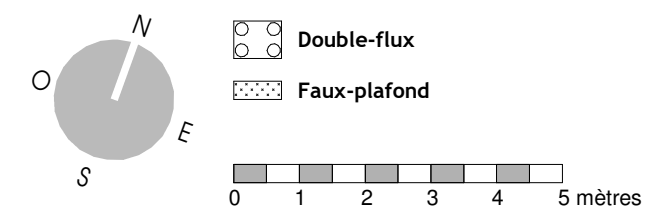
Bloc B - R+2

PLAN N°  
ENH-2-AR-COM-120-B

Unité	Nbre CH.	Surface (+/-m2)
ENH22A31	1CH	62.58 m <sup>2</sup>
	Balcon	7.60 m <sup>2</sup>
ENH22A32	2CH	83.34 m <sup>2</sup>
	Balcon	12.60 m <sup>2</sup>
ENH22A33	1CH	65.60 m <sup>2</sup>
	Balcon	7.31 m <sup>2</sup>
ENH22A34	1CH.	56.79 m <sup>2</sup>
	Balcon	7.71 m <sup>2</sup>
ENH22A35	2CH	90.86 m <sup>2</sup>
	Balcon	9.60 m <sup>2</sup>

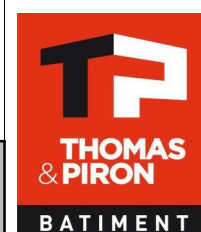


**LEGENDE**



Stade COM  
06/07/23  
Transmis

MAITRE DE L'OUVRAGE :  
Thomas & Piron Bâtiment s.a.  
5, Rue Fort d'Andoy - 5100 Wierde



**assar**  
inclusive architecture



Jambes - Parc d'Enhaive  
BAT 2

INDICE

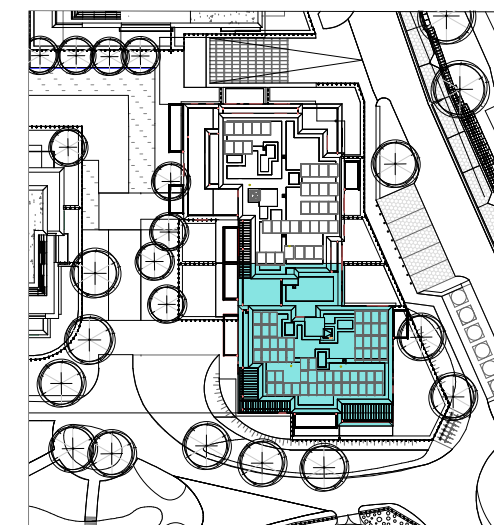
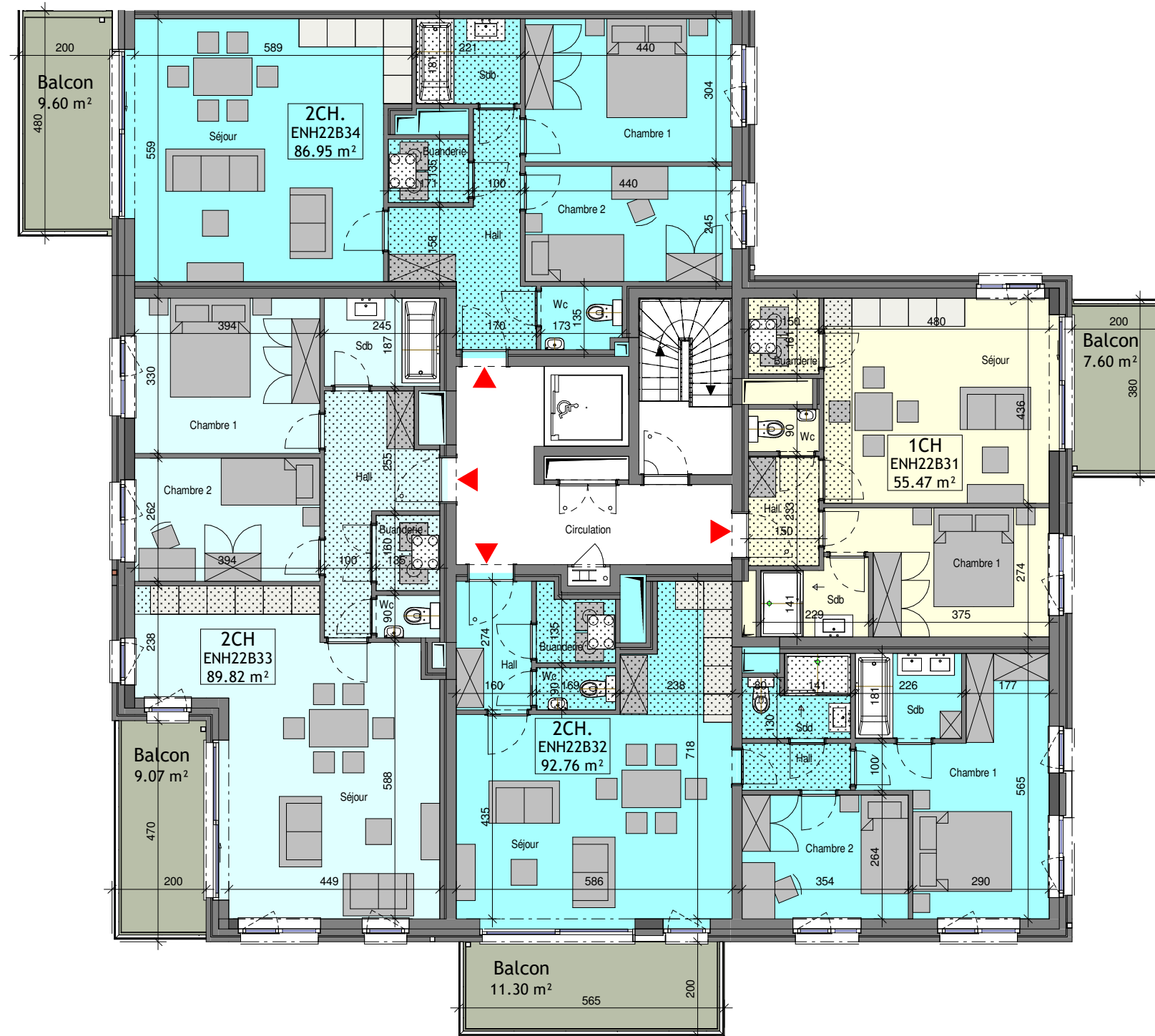
ECHELLE  
1/115

FEUILLE  
10 / 18

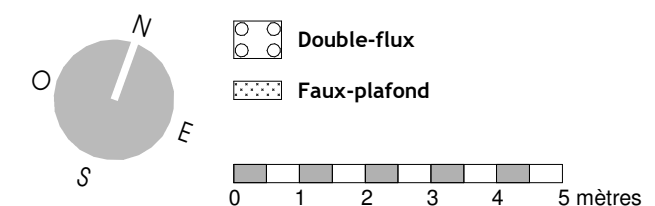
Bloc A - R+3

PLAN N°  
ENH-2-AR-COM-130-A

Unité	Nbre CH.	Surface (+/-m2)
ENH22B31	1CH	55.47 m <sup>2</sup>
	Balcon	7.60 m <sup>2</sup>
ENH22B32	2CH.	92.76 m <sup>2</sup>
	Balcon	11.30 m <sup>2</sup>
ENH22B33	2CH	89.82 m <sup>2</sup>
	Balcon	9.07 m <sup>2</sup>
ENH22B34	2CH.	86.95 m <sup>2</sup>
	Balcon	9.60 m <sup>2</sup>



### LEGENDE



Stade COM  
06/07/23  
Transmis

MAITRE DE L'OUVRAGE :  
Thomas & Piron Bâtiment s.a.  
5, Rue Fort d'Andoy - 5100 Wierde



assar  
inclusive architecture



Jambes - Parc d'Enhaive  
BAT 2

INDICE

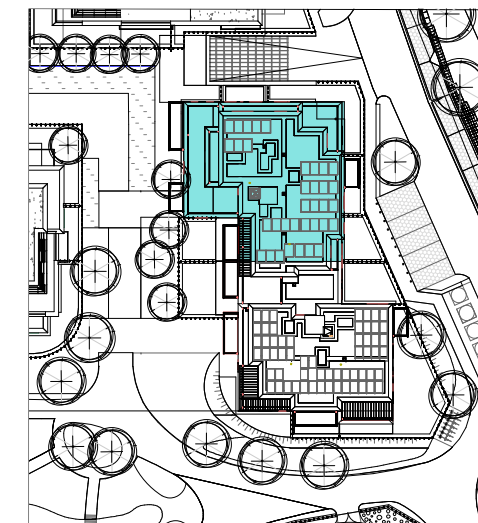
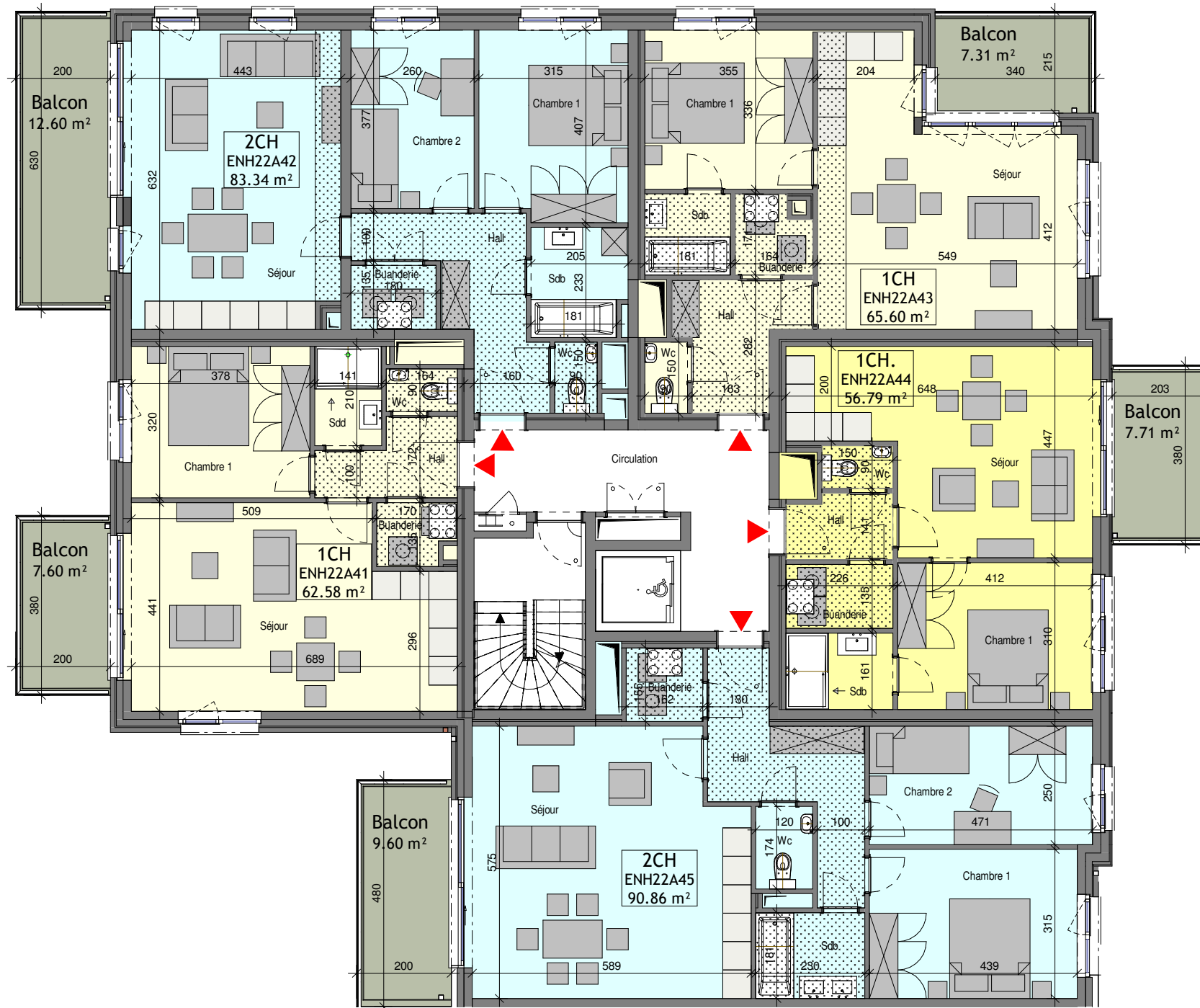
ECHELLE  
1/115

FEUILLE  
11 / 18

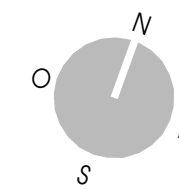
Bloc B - R+3

PLAN N°  
ENH-2-AR-COM-130-B

Unité	Nbre CH.	Surface (+/-m2)
ENH22A41	1CH	62.58 m <sup>2</sup>
	Balcon	7.60 m <sup>2</sup>
ENH22A42	2CH	83.34 m <sup>2</sup>
	Balcon	12.60 m <sup>2</sup>
ENH22A43	1CH	65.60 m <sup>2</sup>
	Balcon	7.31 m <sup>2</sup>
ENH22A44	1CH.	56.79 m <sup>2</sup>
	Balcon	7.71 m <sup>2</sup>
ENH22A45	2CH	90.86 m <sup>2</sup>
	Balcon	9.60 m <sup>2</sup>



**LEGENDE**



- Double-flux
- Faux-plafond



Stade COM  
06/07/23  
Transmis

MAITRE DE L'OUVRAGE :  
Thomas & Piron Bâtiment s.a.  
5, Rue Fort d'Andoy - 5100 Wierde



Jambes - Parc d'Enhaive  
BAT 2

INDICE

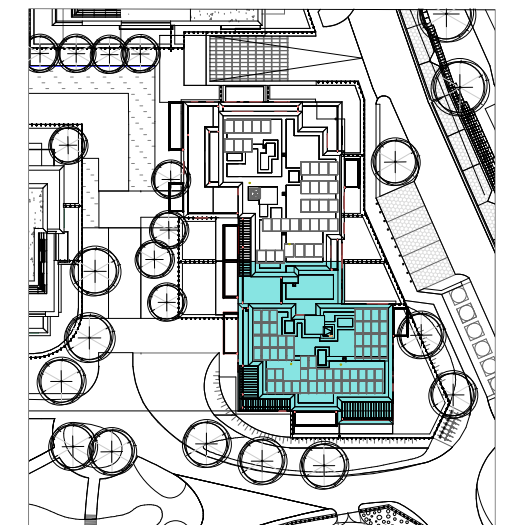
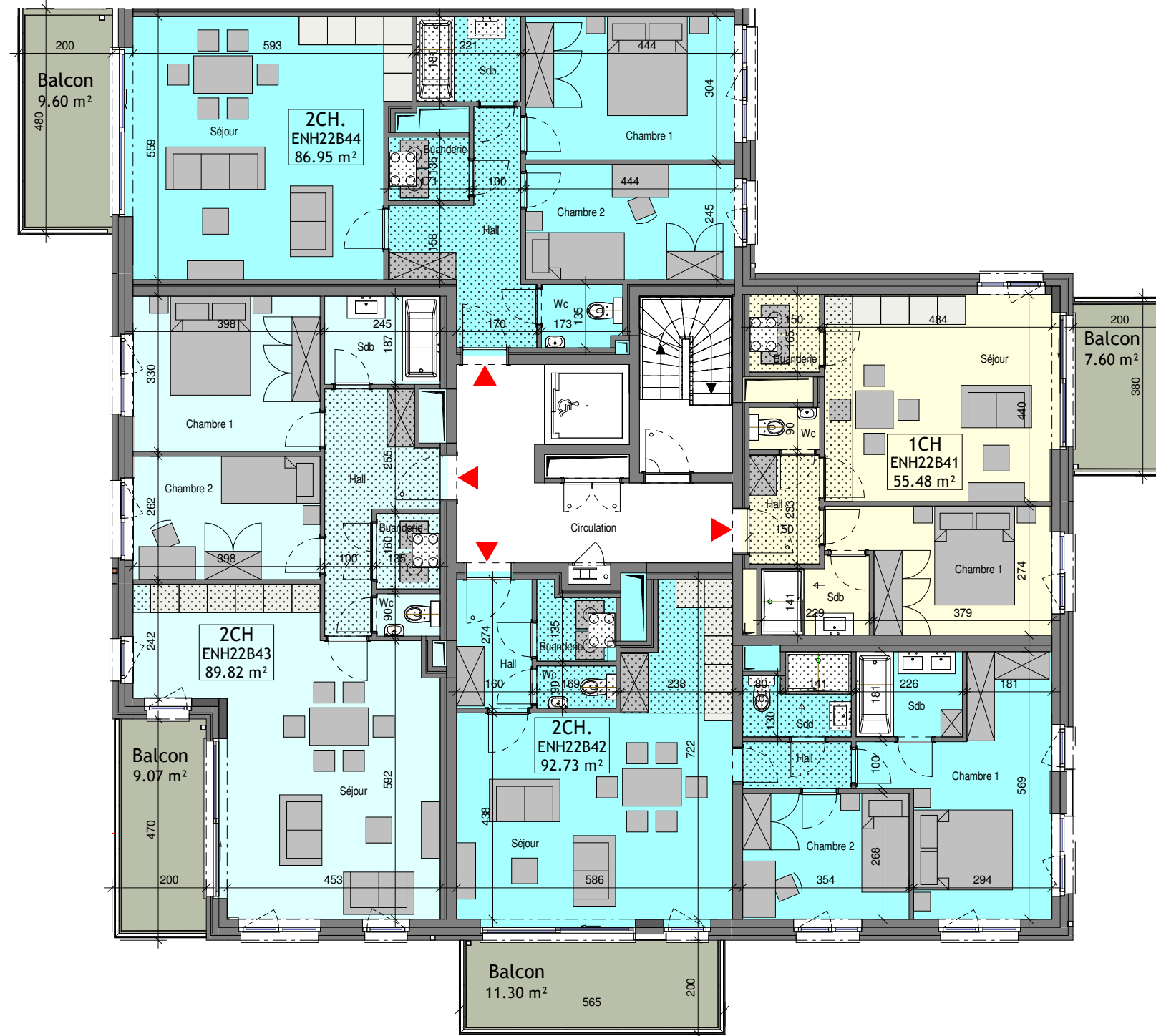
ECHELLE  
1/115

FEUILLE  
12 / 18

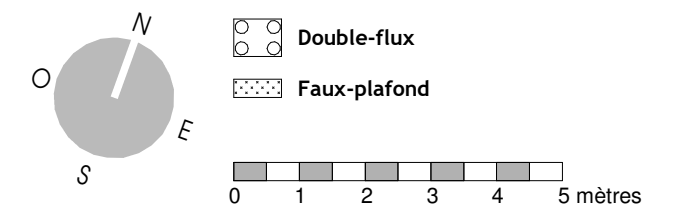
Bloc A - R+4

PLAN N°  
ENH-2-AR-COM-140-A

Unité	Nbre CH.	Surface (+/-m2)
ENH22B41	1CH	55.48 m <sup>2</sup>
	Balcon	7.60 m <sup>2</sup>
ENH22B42	2CH.	92.73 m <sup>2</sup>
	Balcon	11.30 m <sup>2</sup>
ENH22B43	2CH	89.82 m <sup>2</sup>
	Balcon	9.07 m <sup>2</sup>
ENH22B44	2CH.	86.95 m <sup>2</sup>
	Balcon	9.60 m <sup>2</sup>



**LEGENDE**



Stade COM  
06/07/23  
Transmis

MAITRE DE L'OUVRAGE :  
Thomas & Piron Bâtiment s.a.  
5, Rue Fort d'Andoy - 5100 Wierde



Jambes - Parc d'Enhaive  
BAT 2

INDICE

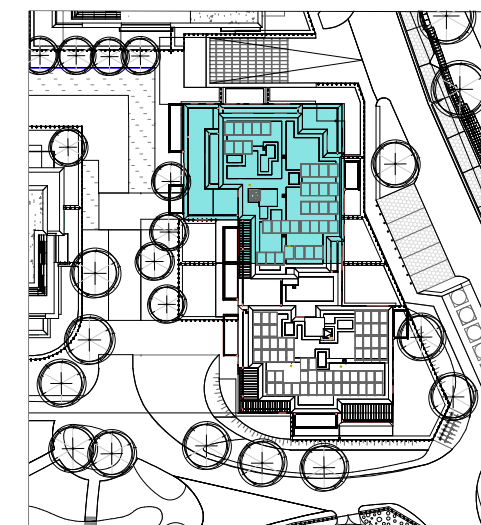
ECHELLE  
1/115

FEUILLE  
13 / 18

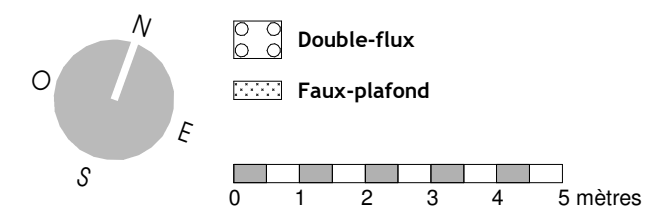
Bloc B - R+4

PLAN N°  
ENH-2-AR-COM-140-B

Unité	Nbre CH.	Surface (+/-m2)
ENH22A51	3CH	126.86 m <sup>2</sup>
	Terrasse	90.86 m <sup>2</sup>
ENH22A52	1CH.	57.03 m <sup>2</sup>
	Balcon	7.71 m <sup>2</sup>
ENH22A53	2CH	90.86 m <sup>2</sup>
	Balcon	9.44 m <sup>2</sup>

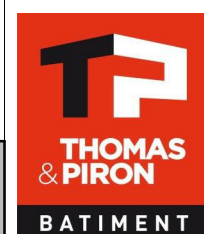


**LEGENDE**



Stade COM  
06/07/23  
Transmis

MAITRE DE L'OUVRAGE :  
Thomas & Piron Bâtiment s.a.  
5, Rue Fort d'Andoy - 5100 Wierde



**ASSAR**  
inclusive architecture



Jambes - Parc d'Enhaive  
BAT 2

INDICE

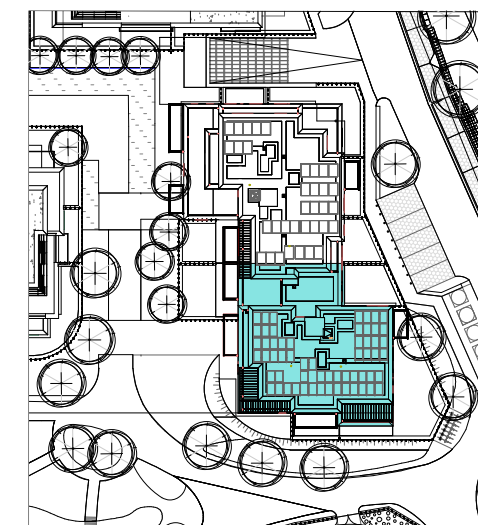
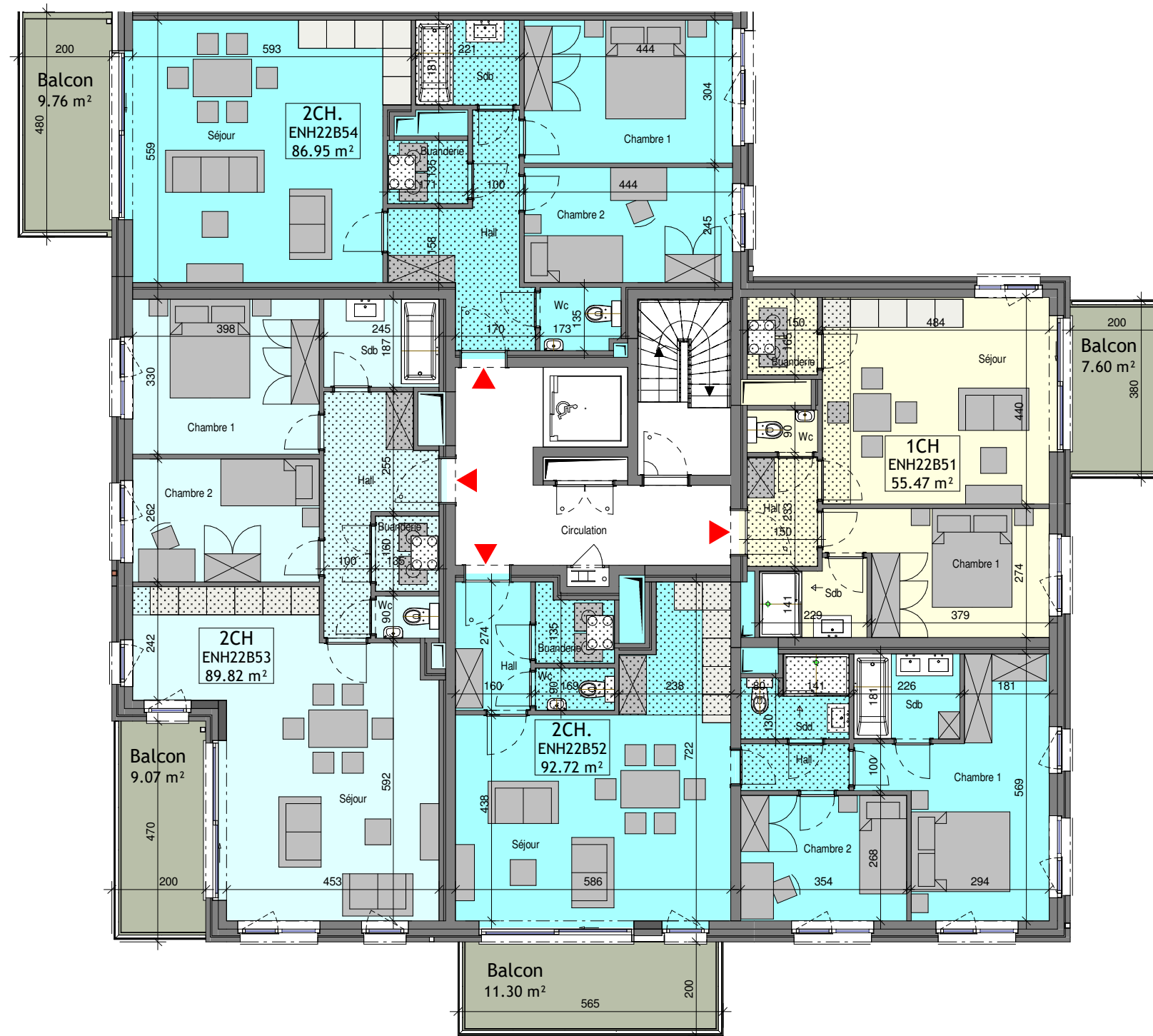
ECHELLE  
1/115

FEUILLE  
14 / 18

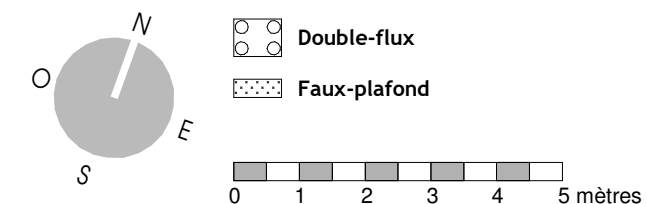
Bloc A - R+5

PLAN N°  
ENH-2-AR-COM-150-A

Unité	Nbre CH.	Surface (+/-m2)
ENH22B51	1CH	55.47 m <sup>2</sup>
	Balcon	7.60 m <sup>2</sup>
ENH22B52	2CH.	92.72 m <sup>2</sup>
	Balcon	11.30 m <sup>2</sup>
ENH22B53	2CH	89.82 m <sup>2</sup>
	Balcon	9.07 m <sup>2</sup>
ENH22B54	2CH.	86.95 m <sup>2</sup>
	Balcon	9.76 m <sup>2</sup>



**LEGENDE**



Stade COM  
06/07/23  
Transmis

MAITRE DE L'OUVRAGE :  
Thomas & Piron Bâtiment s.a.  
5, Rue Fort d'Andoy - 5100 Wierde



Jambes - Parc d'Enhaive  
BAT 2

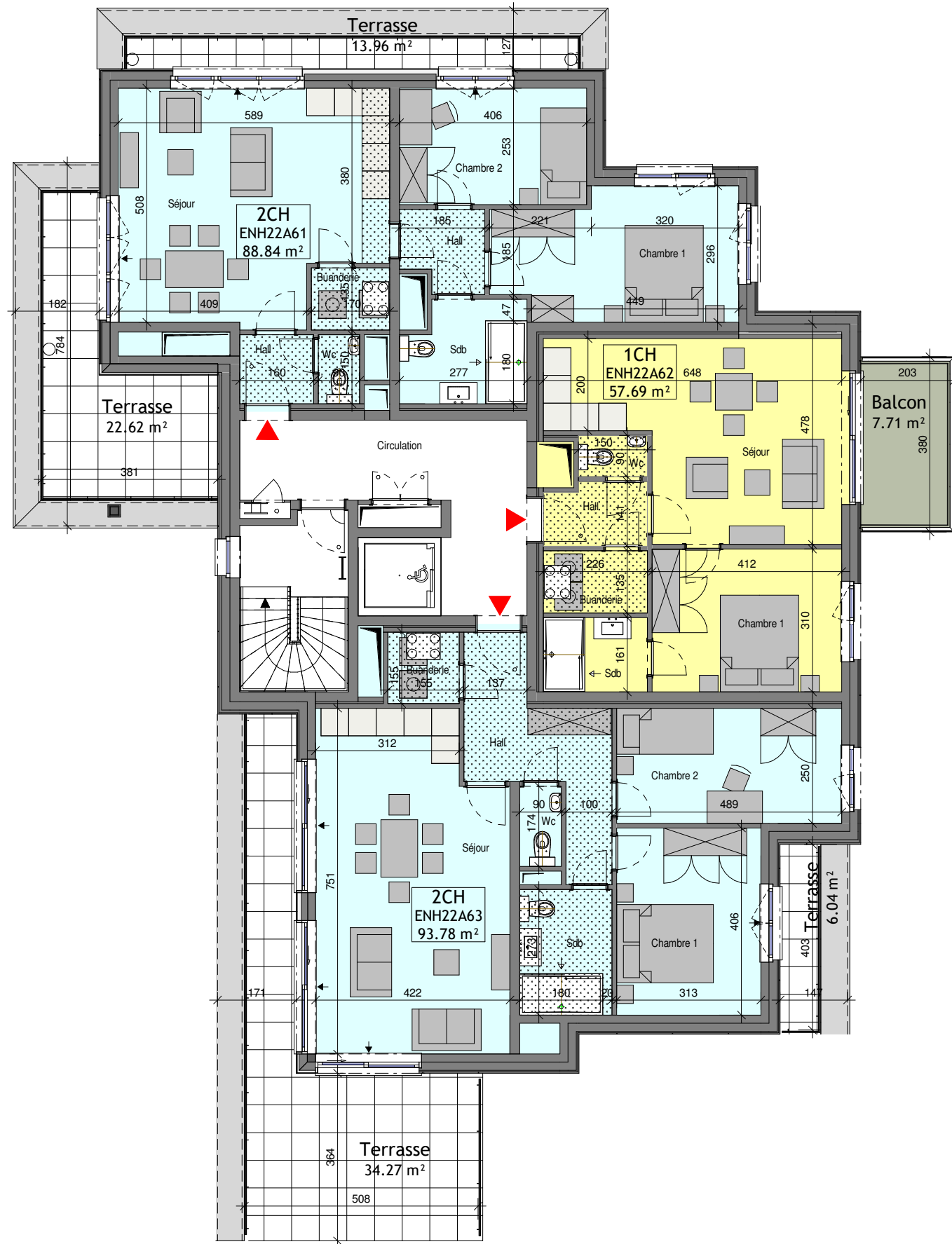
INDICE

ECHELLE  
1/115

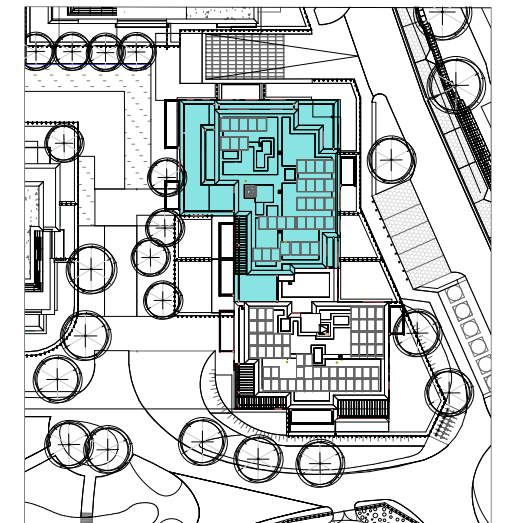
FEUILLE  
15 /18

Bloc B - R+5

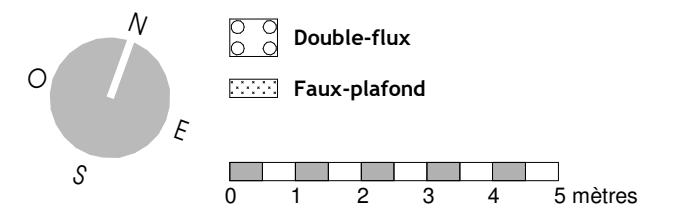
PLAN N°  
ENH-2-AR-COM-150-B



Unité	Nbre CH.	Surface (+/-m2)
ENH22A61	2CH	88.84 m <sup>2</sup>
	Terrasse	36.59 m <sup>2</sup>
ENH22A62	1CH	57.69 m <sup>2</sup>
	Balcon	7.71 m <sup>2</sup>
ENH22A63	2CH	93.78 m <sup>2</sup>
	Terrasse	40.30 m <sup>2</sup>



**LEGENDE**



Stade COM  
06/07/23  
Transmis

MAITRE DE L'OUVRAGE :  
Thomas & Piron Bâtiment s.a.  
5, Rue Fort d'Andoy - 5100 Wierde



Jambes - Parc d'Enhaive  
BAT 2

INDICE

ECHELLE  
1/115

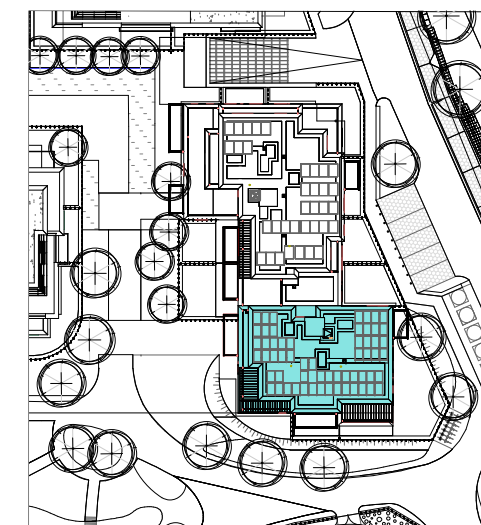
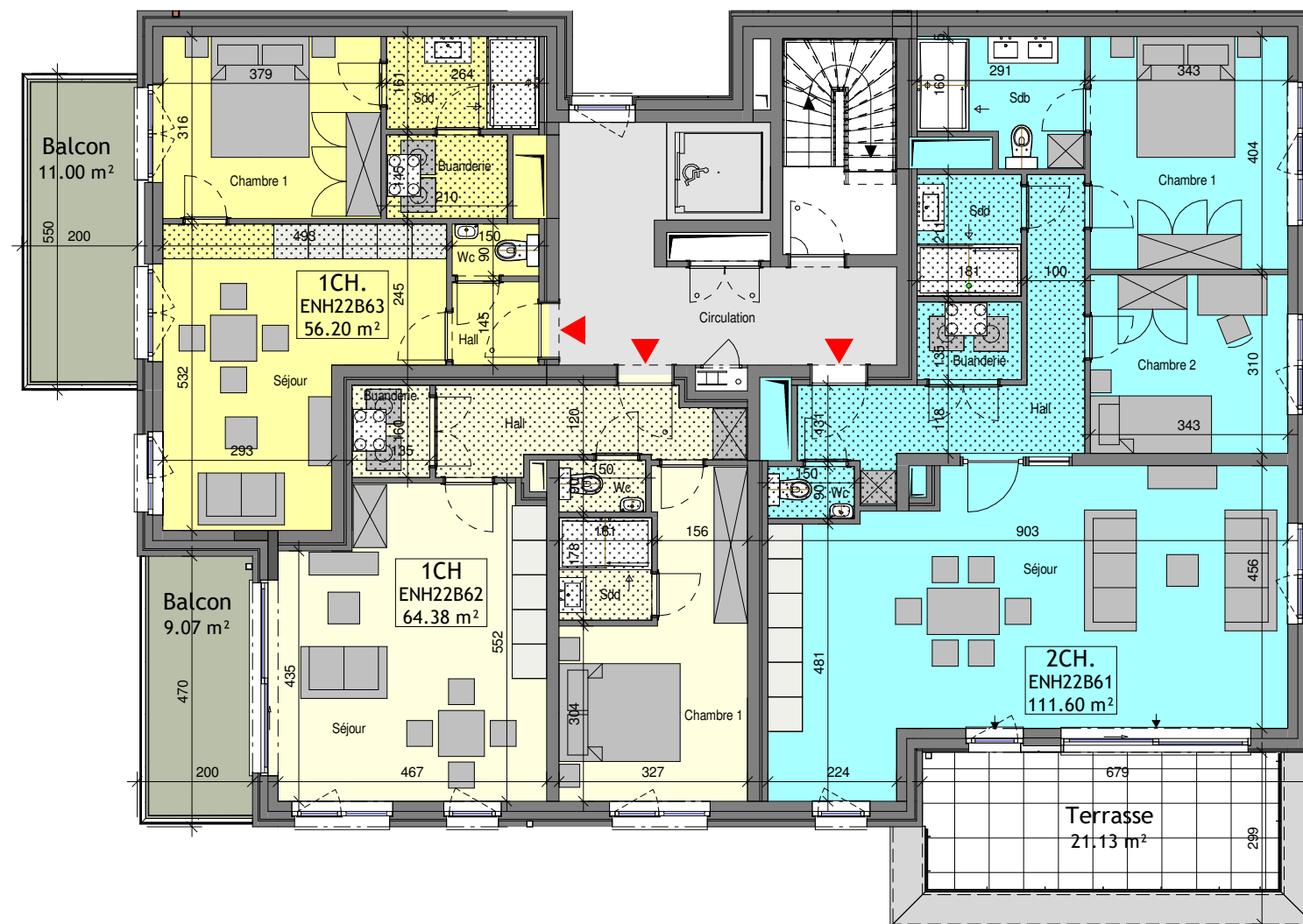
FEUILLE  
16 / 18

Bloc A - R+6

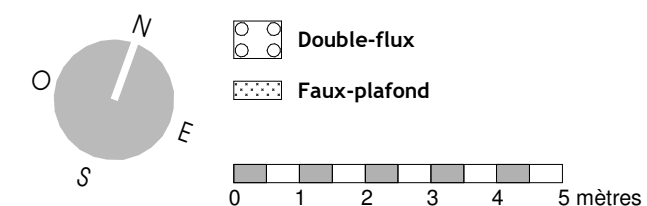
PLAN N°  
ENH-2-AR-COM-160-A



Unité	Nbre CH.	Surface (+/-m2)
ENH22B61	2CH.	111.60 m <sup>2</sup>
	Terrasse	21.13 m <sup>2</sup>
ENH22B62	1CH	64.38 m <sup>2</sup>
	Balcon	9.07 m <sup>2</sup>
ENH22B63	1CH.	56.20 m <sup>2</sup>
	Balcon	11.00 m <sup>2</sup>

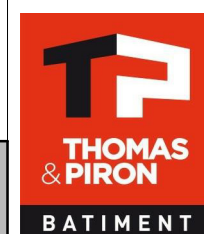


**LEGENDE**



Stade COM  
06/07/23  
Transmis

MAITRE DE L'OUVRAGE :  
Thomas & Piron Bâtiment s.a.  
5, Rue Fort d'Andoy - 5100 Wierde



Jambes - Parc d'Enhaive  
BAT 2

INDICE

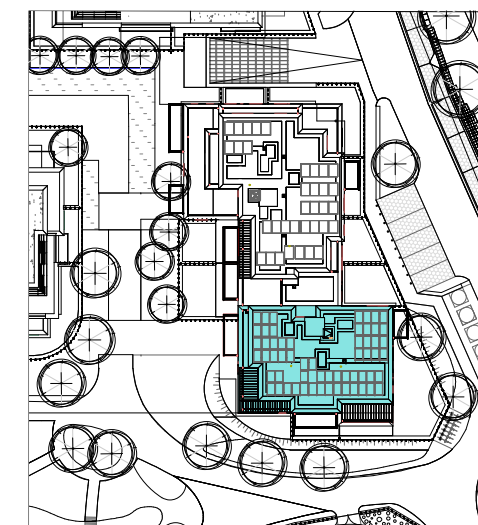
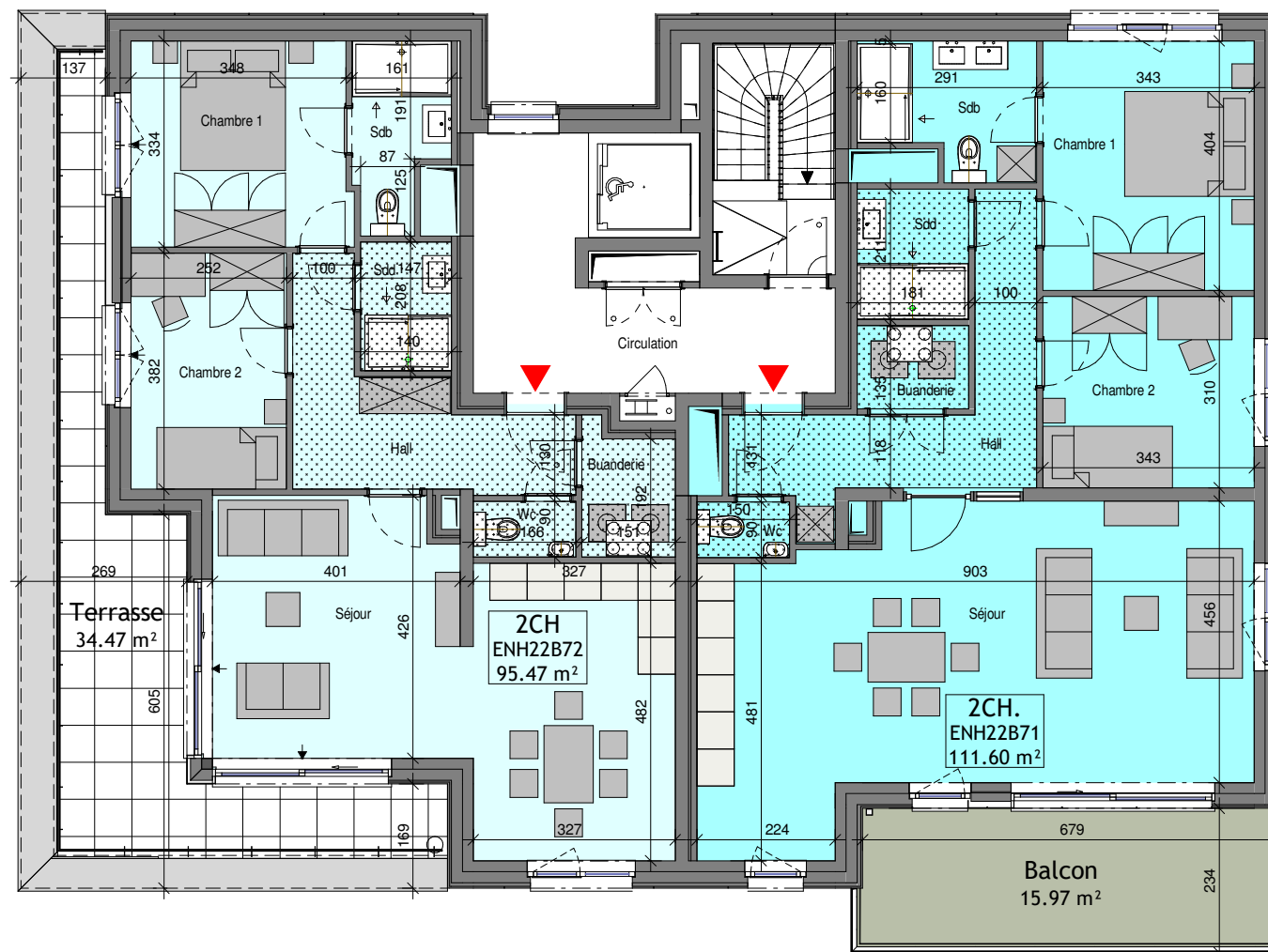
ECHELLE  
1/115

FEUILLE  
17/18

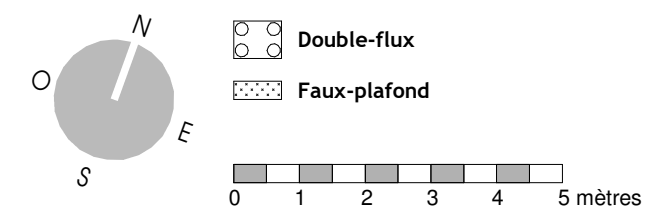
Bloc B - R+6

PLAN N°  
ENH-2-AR-COM-160-B

Unité	Nbre CH.	Surface (+/-m2)
ENH22B71	2CH.	111.60 m <sup>2</sup>
	Balcon	15.97 m <sup>2</sup>
ENH22B72	2CH	95.47 m <sup>2</sup>
	Terrasse	34.47 m <sup>2</sup>

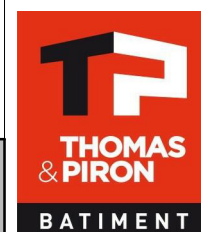


### LEGENDE



Stade COM  
06/07/23  
Transmis

MAITRE DE L'OUVRAGE :  
Thomas & Piron Bâtiment s.a.  
5, Rue Fort d'Andoy - 5100 Wierde



assar  
inclusive architecture



Jambes - Parc d'Enhaive  
BAT 2

INDICE

ECHELLE  
1/115

FEUILLE  
18 / 18

Bloc B - R+7

PLAN N°  
ENH-2-AR-COM-170-B