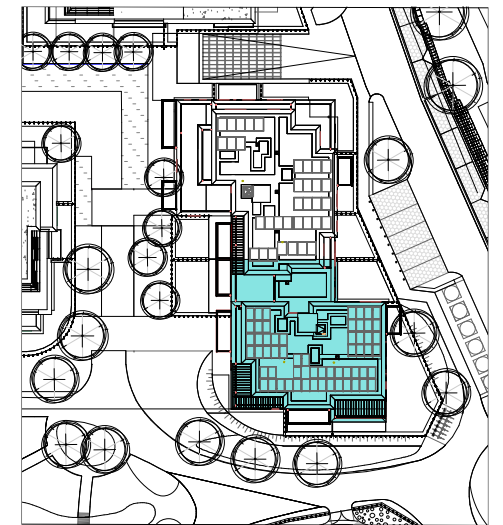
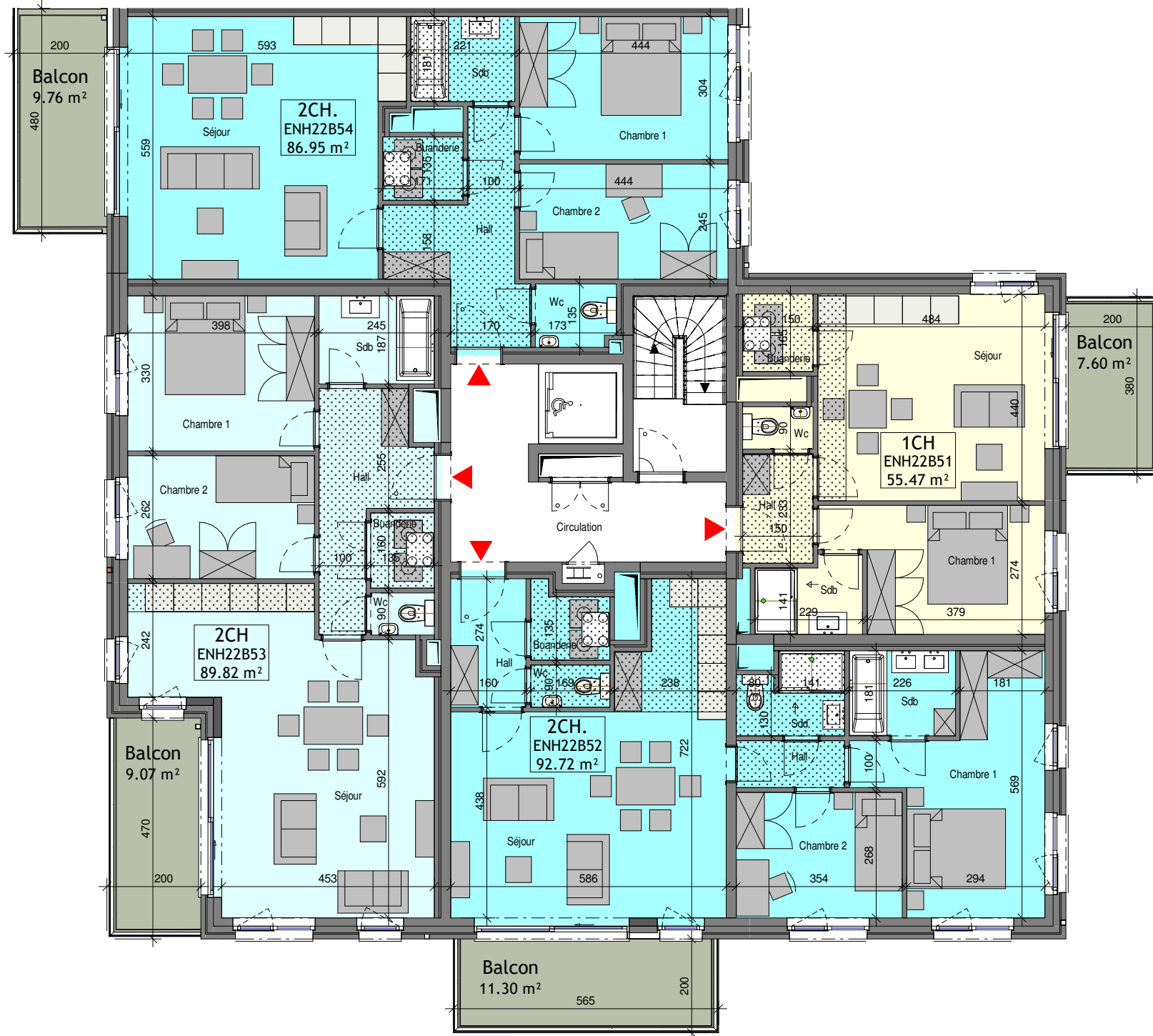
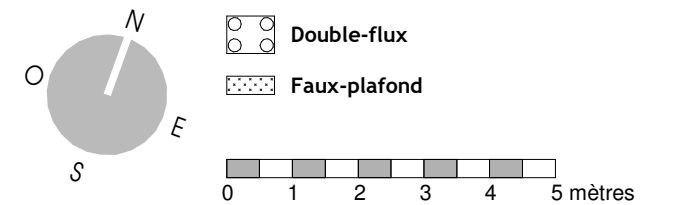


| Unité    | Nbre CH. | Surface (+/-m2)      |
|----------|----------|----------------------|
| ENH22B51 | 1CH      | 55.47 m <sup>2</sup> |
|          | Balcon   | 7.60 m <sup>2</sup>  |
| ENH22B52 | 2CH.     | 92.72 m <sup>2</sup> |
|          | Balcon   | 11.30 m <sup>2</sup> |
| ENH22B53 | 2CH      | 89.82 m <sup>2</sup> |
|          | Balcon   | 9.07 m <sup>2</sup>  |
| ENH22B54 | 2CH.     | 86.95 m <sup>2</sup> |
|          | Balcon   | 9.76 m <sup>2</sup>  |



**LEGENDE**



Stade COM  
06/07/23  
Transmis

MAITRE DE L'OUVRAGE :  
Thomas & Piron Bâtiment s.a.  
5, Rue Fort d'Andoy - 5100 Wierde



**ASSAR**  
inclusive architecture



Jambes - Parc d'Enhaive  
BAT 2

INDICE

ECHELLE  
1/115

FEUILLE  
15 / 18

Bloc B - R+5

PLAN N°  
ENH-2-AR-COM-150-B