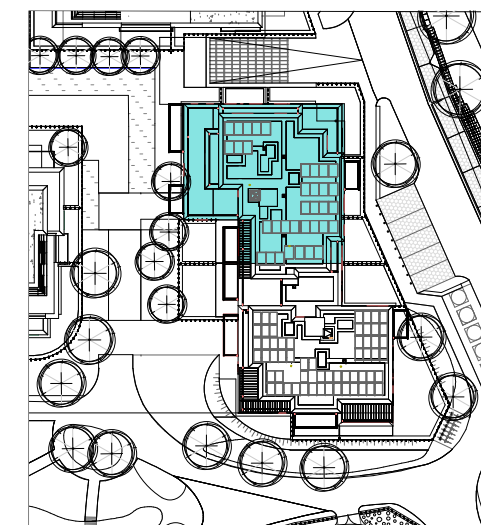
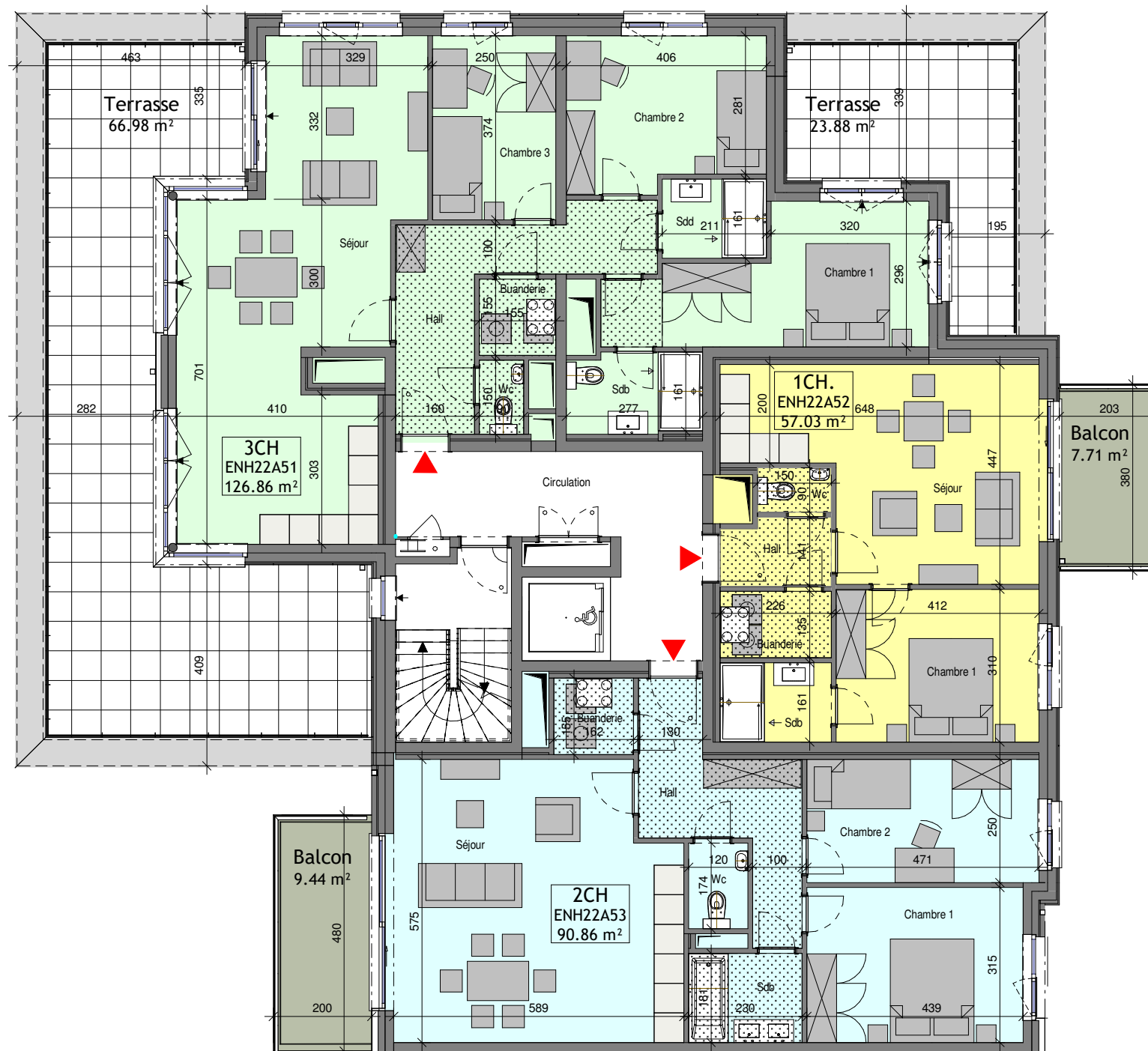
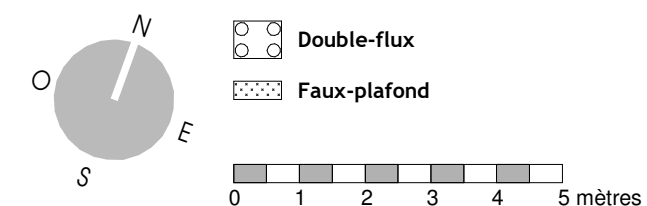


Unité	Nbre CH.	Surface (+/-m2)
ENH22A51	3CH	126.86 m ²
	Terrasse	90.86 m ²
ENH22A52	1CH.	57.03 m ²
	Balcon	7.71 m ²
ENH22A53	2CH	90.86 m ²
	Balcon	9.44 m ²

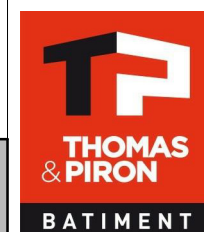


LEGENDE



Stade COM
06/07/23
Transmis

MAITRE DE L'OUVRAGE :
Thomas & Piron Bâtiment s.a.
5, Rue Fort d'Andoy - 5100 Wierde



ASSAR
inclusive architecture



Jambes - Parc d'Enhaive
BAT 2

INDICE

ECHELLE
1/115

FEUILLE
14 / 18

Bloc A - R+5

PLAN N°
ENH-2-AR-COM-150-A