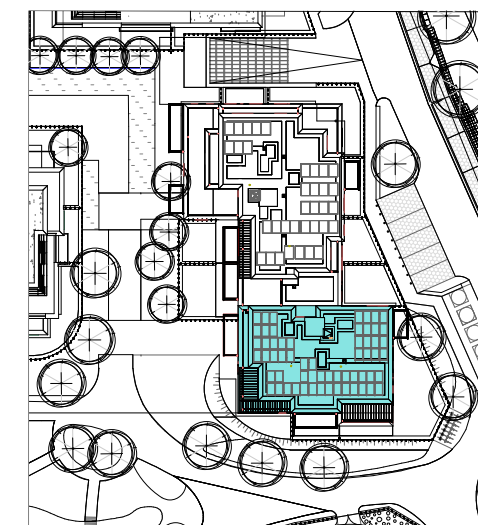
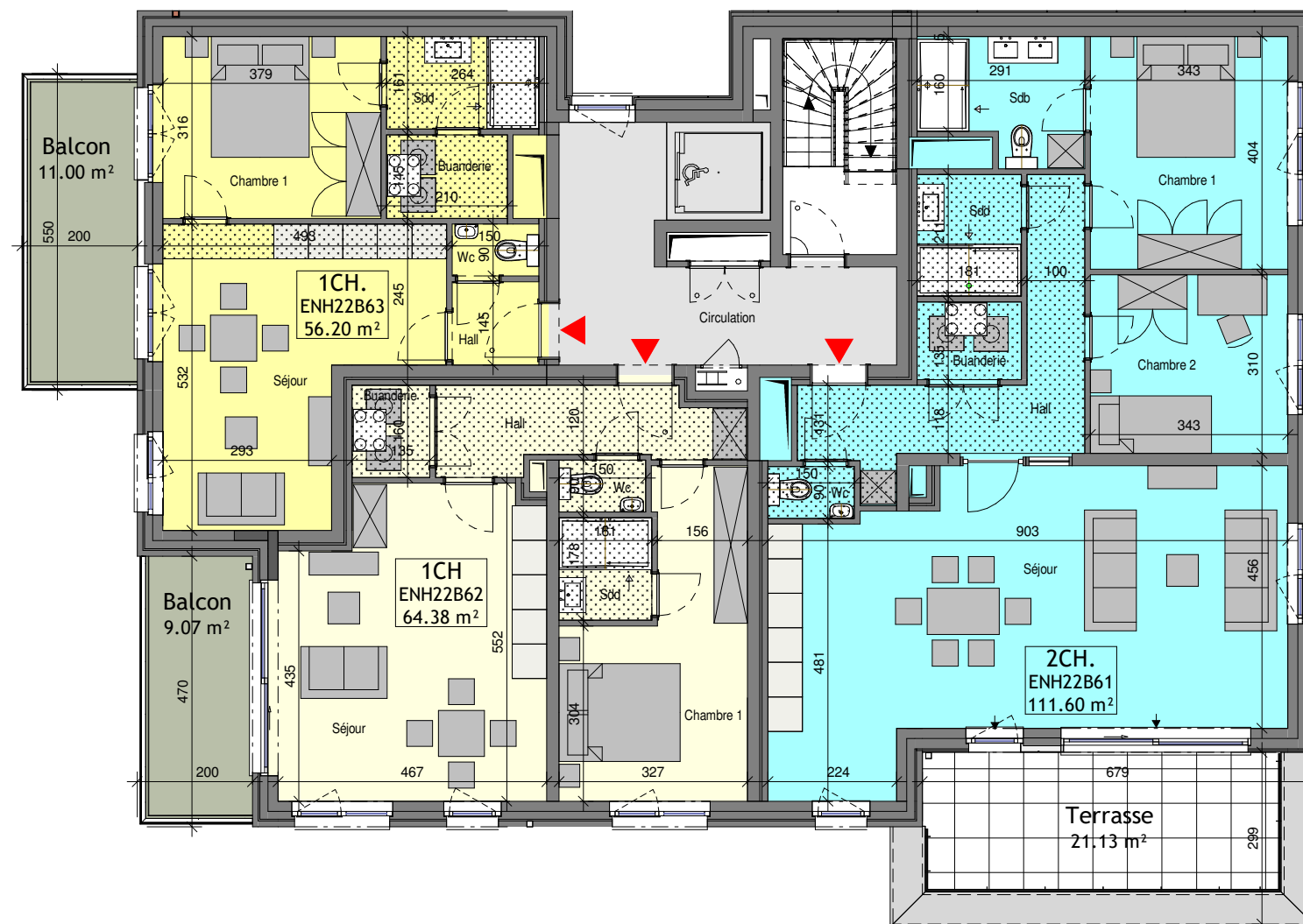
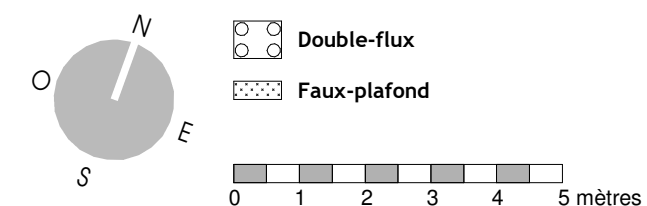


Unité	Nbre CH.	Surface (+/-m2)
ENH22B61	2CH.	111.60 m ²
	Terrasse	21.13 m ²
ENH22B62	1CH	64.38 m ²
	Balcon	9.07 m ²
ENH22B63	1CH.	56.20 m ²
	Balcon	11.00 m ²

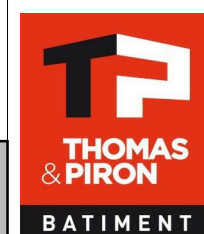


LEGENDE



Stade COM
06/07/23
Transmis

MAITRE DE L'OUVRAGE :
Thomas & Piron Bâtiment s.a.
5, Rue Fort d'Andoy - 5100 Wierde



Jambes - Parc d'Enhaive
BAT 2

INDICE

ECHELLE
1/115

FEUILLE
17/18

Bloc B - R+6

PLAN N°
ENH-2-AR-COM-160-B