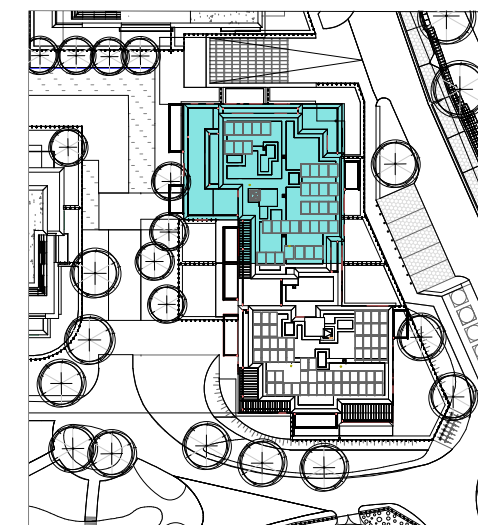
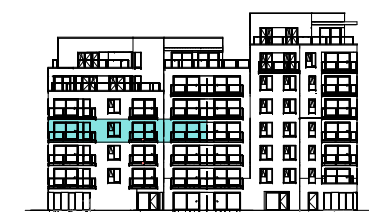
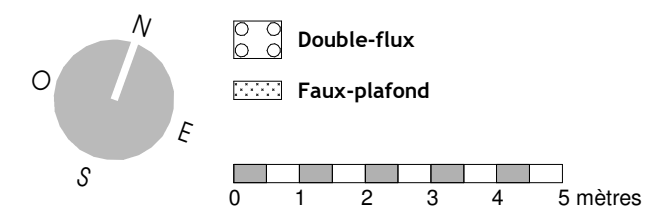


Unité	Nbre CH.	Surface (+/-m2)
ENH22A31	1CH	62.58 m <sup>2</sup>
	Balcon	7.60 m <sup>2</sup>
ENH22A32	2CH	83.34 m <sup>2</sup>
	Balcon	12.60 m <sup>2</sup>
ENH22A33	1CH	65.60 m <sup>2</sup>
	Balcon	7.31 m <sup>2</sup>
ENH22A34	1CH.	56.79 m <sup>2</sup>
	Balcon	7.71 m <sup>2</sup>
ENH22A35	2CH	90.86 m <sup>2</sup>
	Balcon	9.60 m <sup>2</sup>

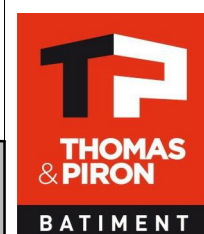


**LEGENDE**



Stade COM  
06/07/23  
Transmis

MAITRE DE L'OUVRAGE :  
Thomas & Piron Bâtiment s.a.  
5, Rue Fort d'Andoy - 5100 Wierde



**ASSAR**  
inclusive architecture



Jambes - Parc d'Enhaive  
BAT 2

INDICE

ECHELLE  
1/115

FEUILLE  
10 / 18

Bloc A - R+3

PLAN N°  
ENH-2-AR-COM-130-A