

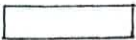

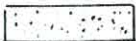
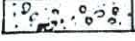
PROVINCE DE HAINAUT
COMMUNE DE Leval-Trahegnies
BINCHE

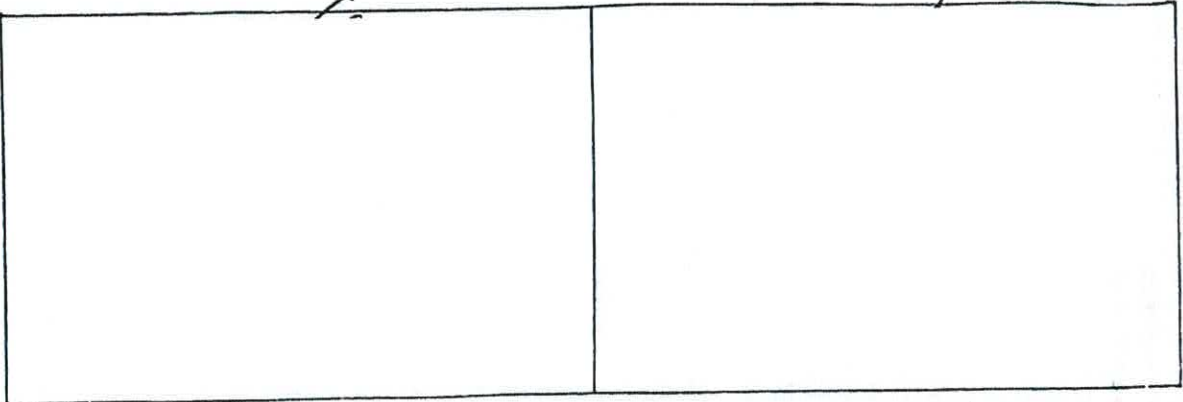
PROJET
TRANSFORMATION D'UNE HABITATION

SITUATION:

SECTION CADASTRALE : C 165 G6

LEGENDE

-  maçonnerie existante
-  maçonnerie à construire
-  maç. à démolir
-  béton armé



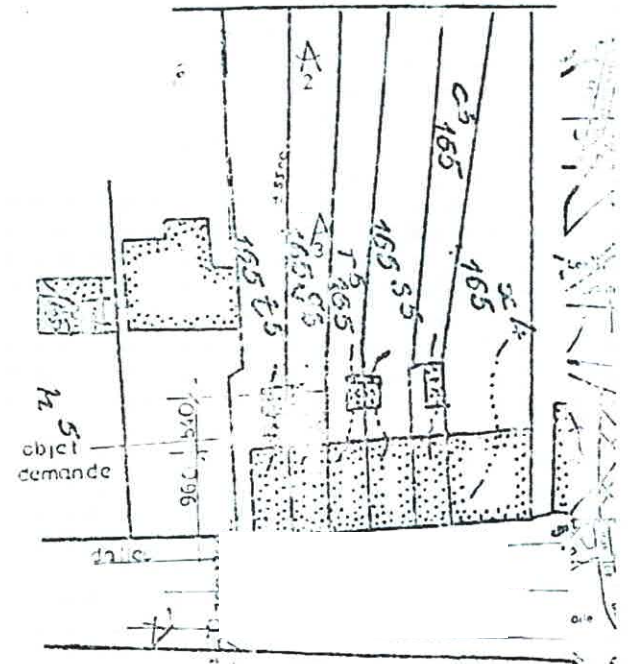
La responsabilité de l'architecte ne peut être engagée que si le maître de l'ouvrage l'avertit officiellement du commencement des travaux. Toute différence des côtes données aux plans en plus ou en moins sera sujet à décision.

De convention expresse les études techniques spécialisées en béton armé ou autres, sont en dehors de la mission confiée à l'architecte. elles feront l'objet d'une étude exécutée par un bureau spécialisé.

date: 26/2/02	dossier: 24/02	plan n° 1
---------------	----------------	-----------

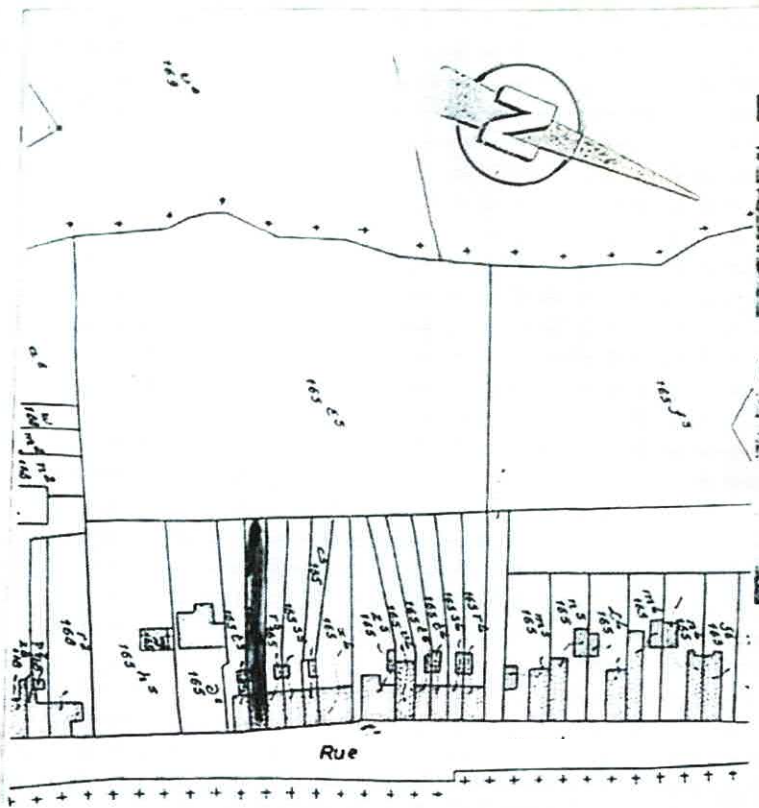


FACADE ARRIERE EXISTANTE ET FUTURE

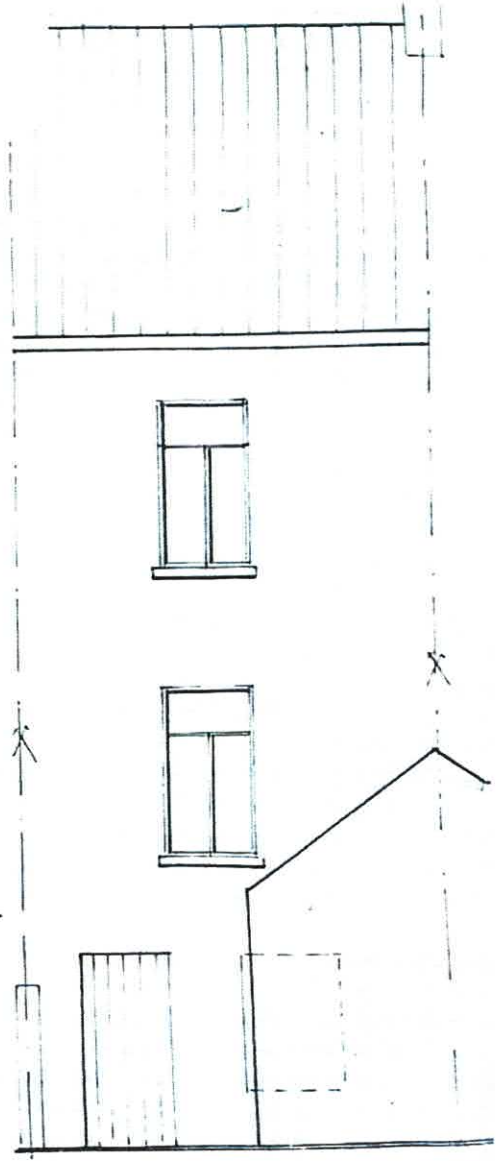
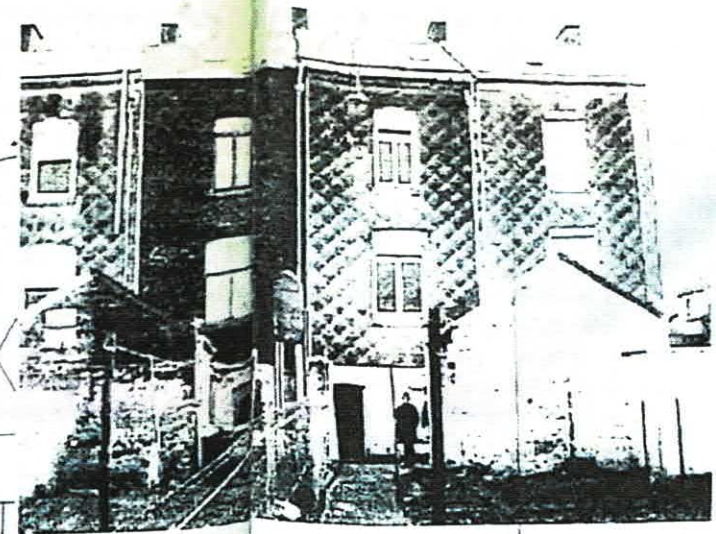


IMPLANTATION 1/500

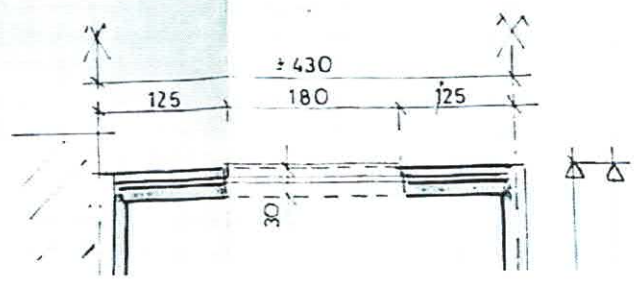
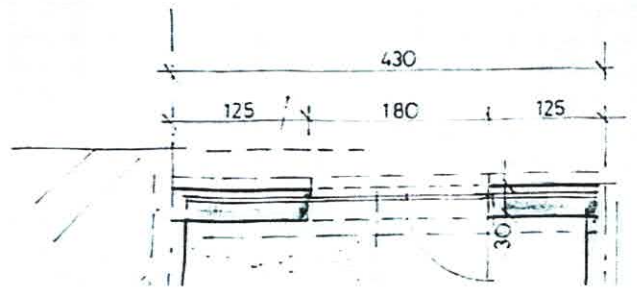
voies équipées eau gaz
elec tel égouts

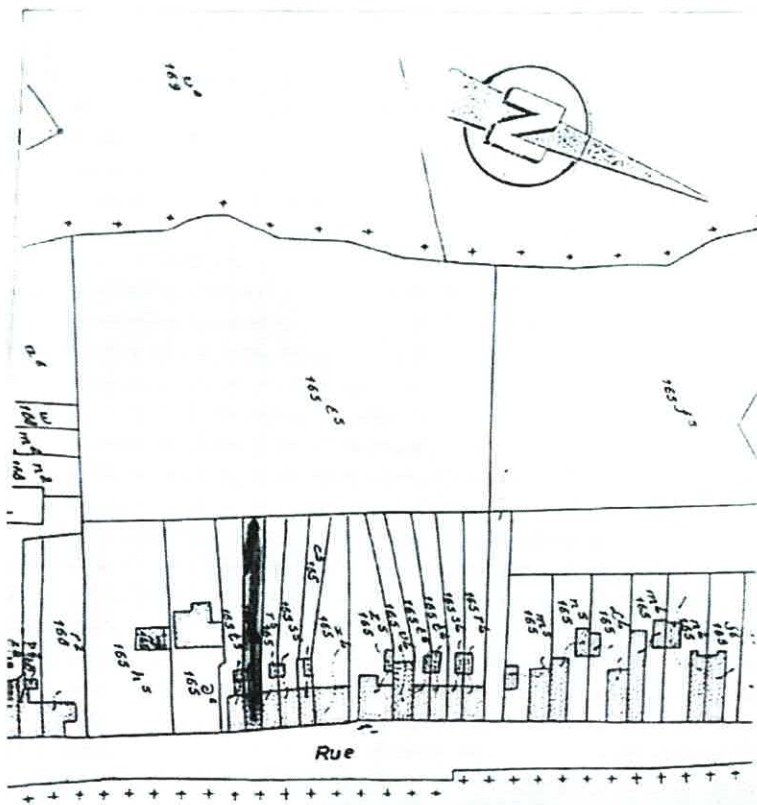


EXTRAIT CADASTRAL 1/1250

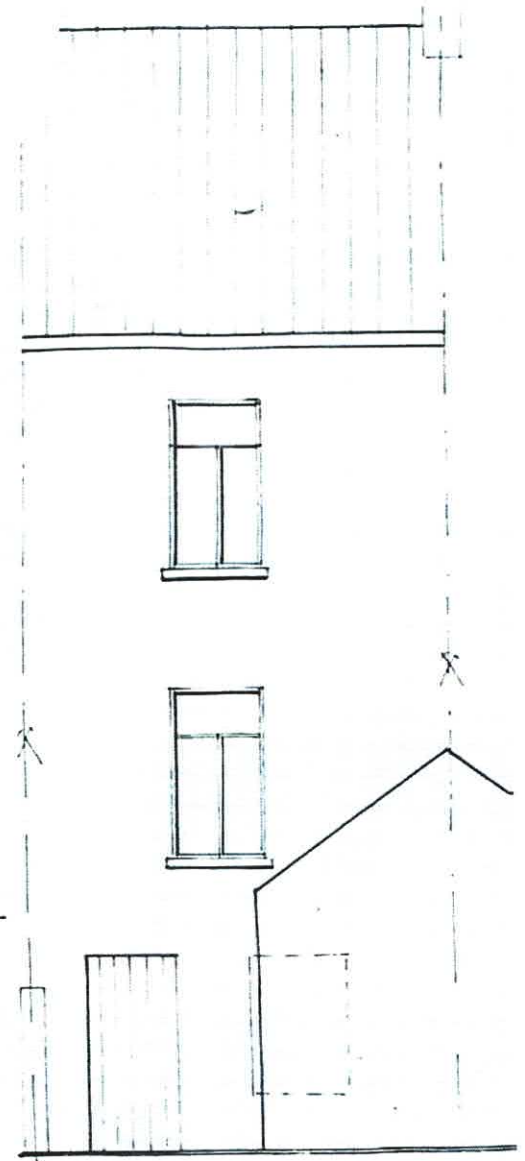
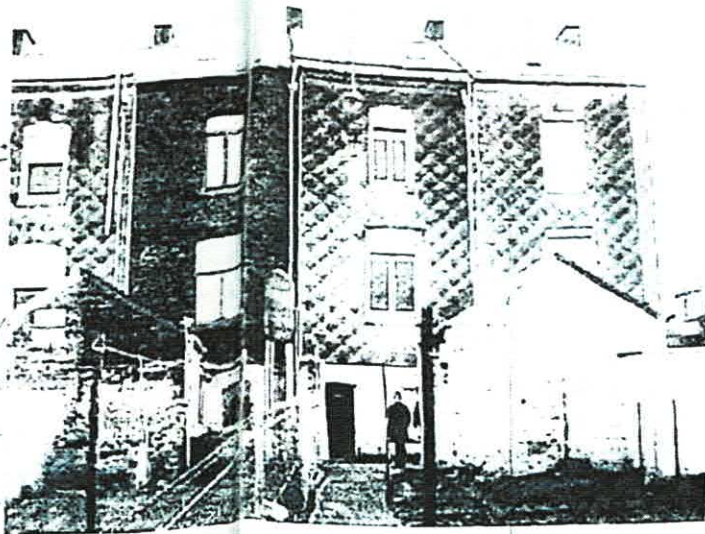


FACADE ARRIERE

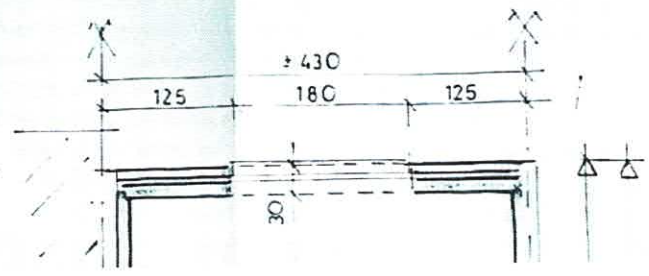
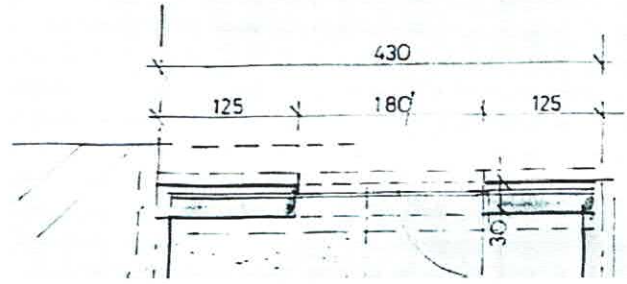


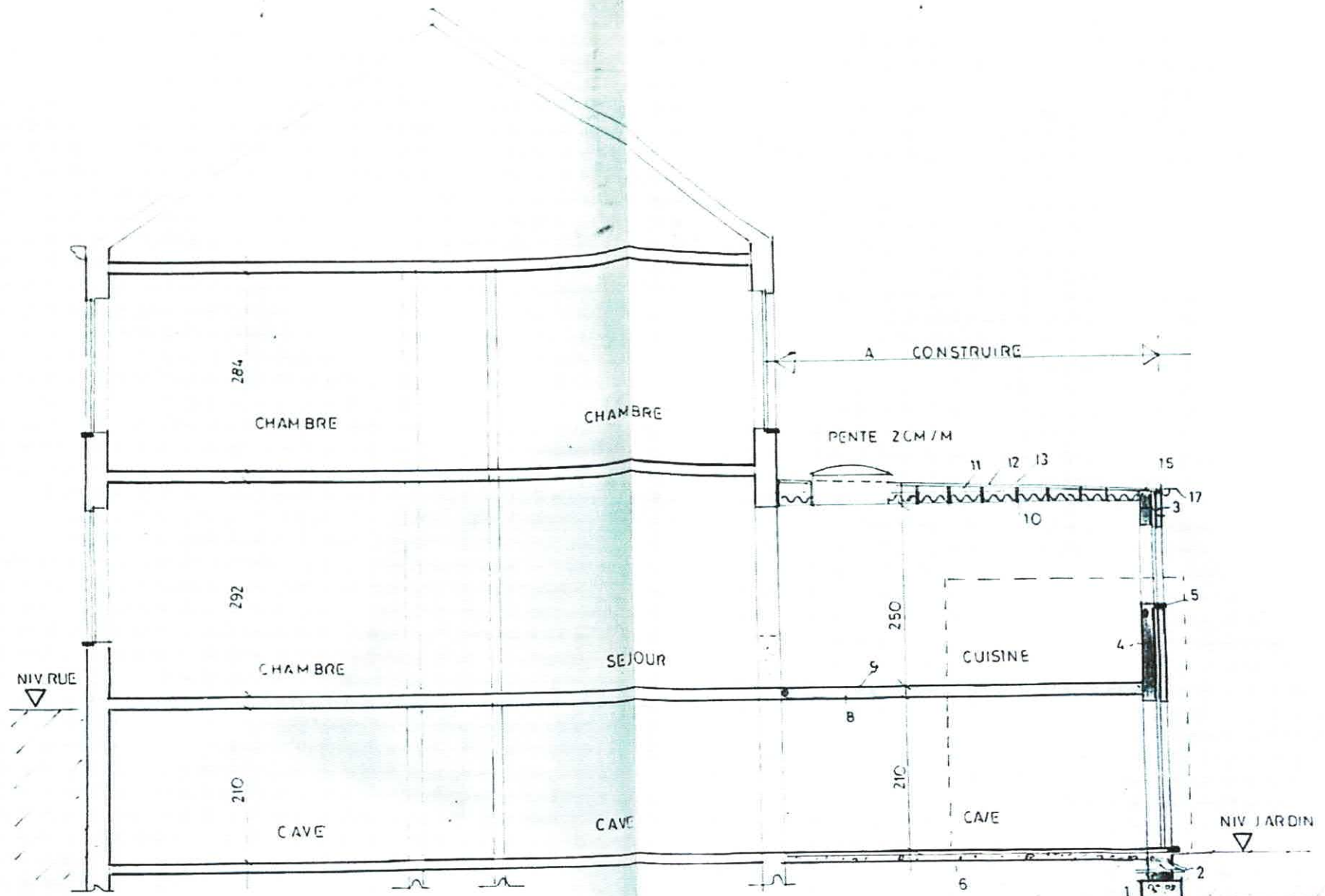


EXTRAIT CADASTRAL 1/1250



FACADE ARRIERE E





NIV RUE

NIV JARDIN

A CONSTRUIRE

PENTE 2CM/M

284

292

210

CHAMBRE

CHAMBRE

CHAMBRE

SEJOUR

CAVE

CAVE

CUISINE

CAVE

11 12 13
10

15

17

5

4

8

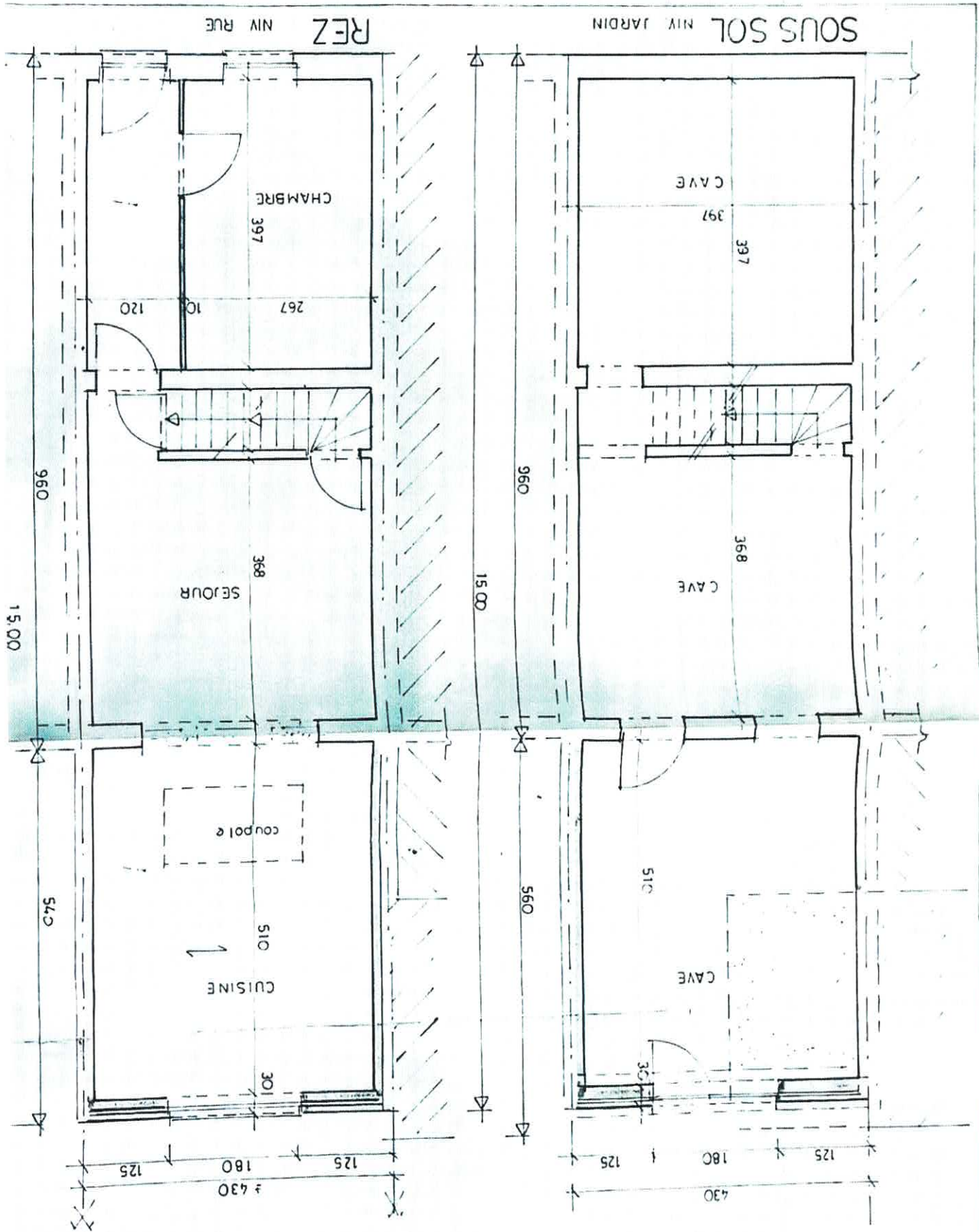
250

210

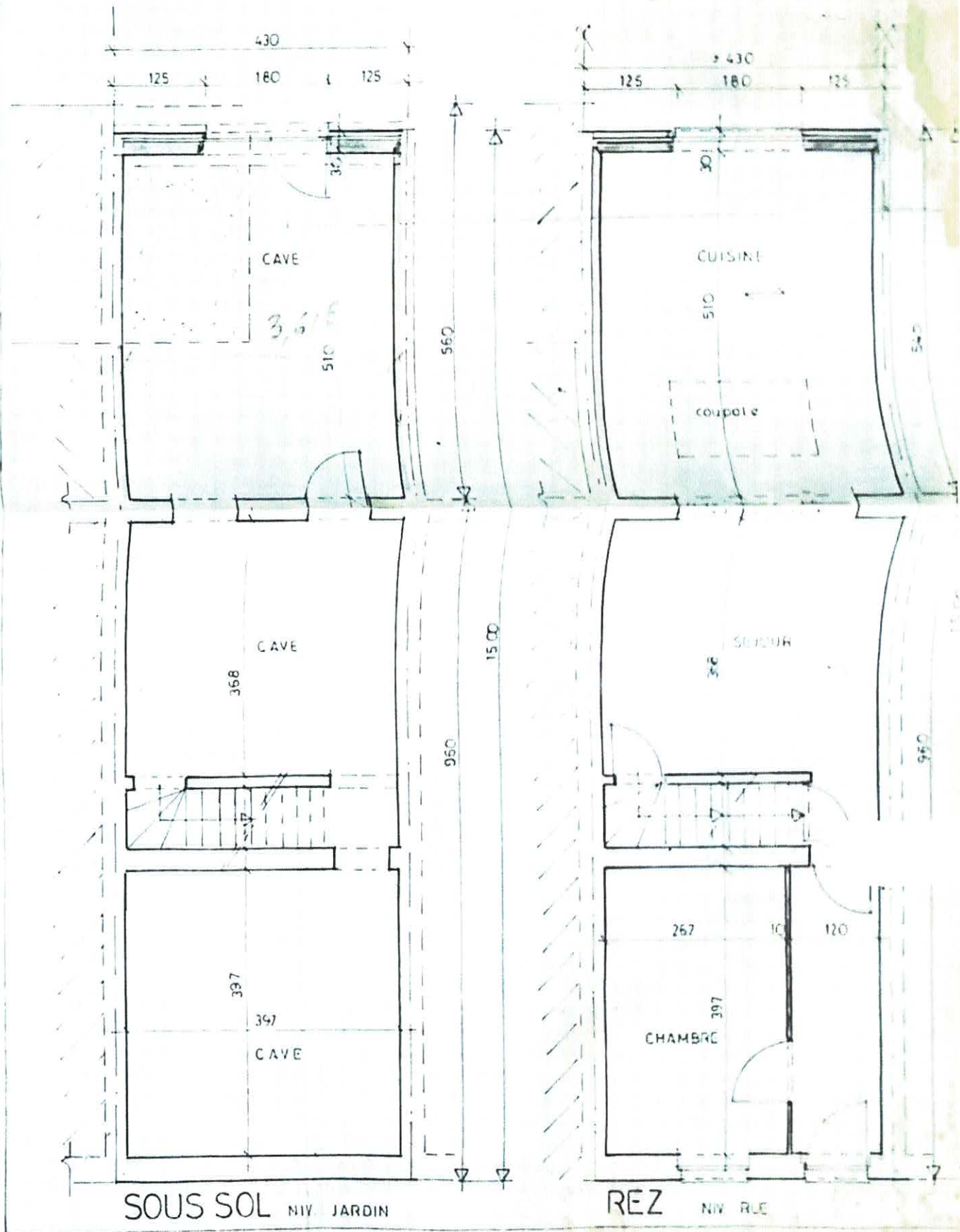
6

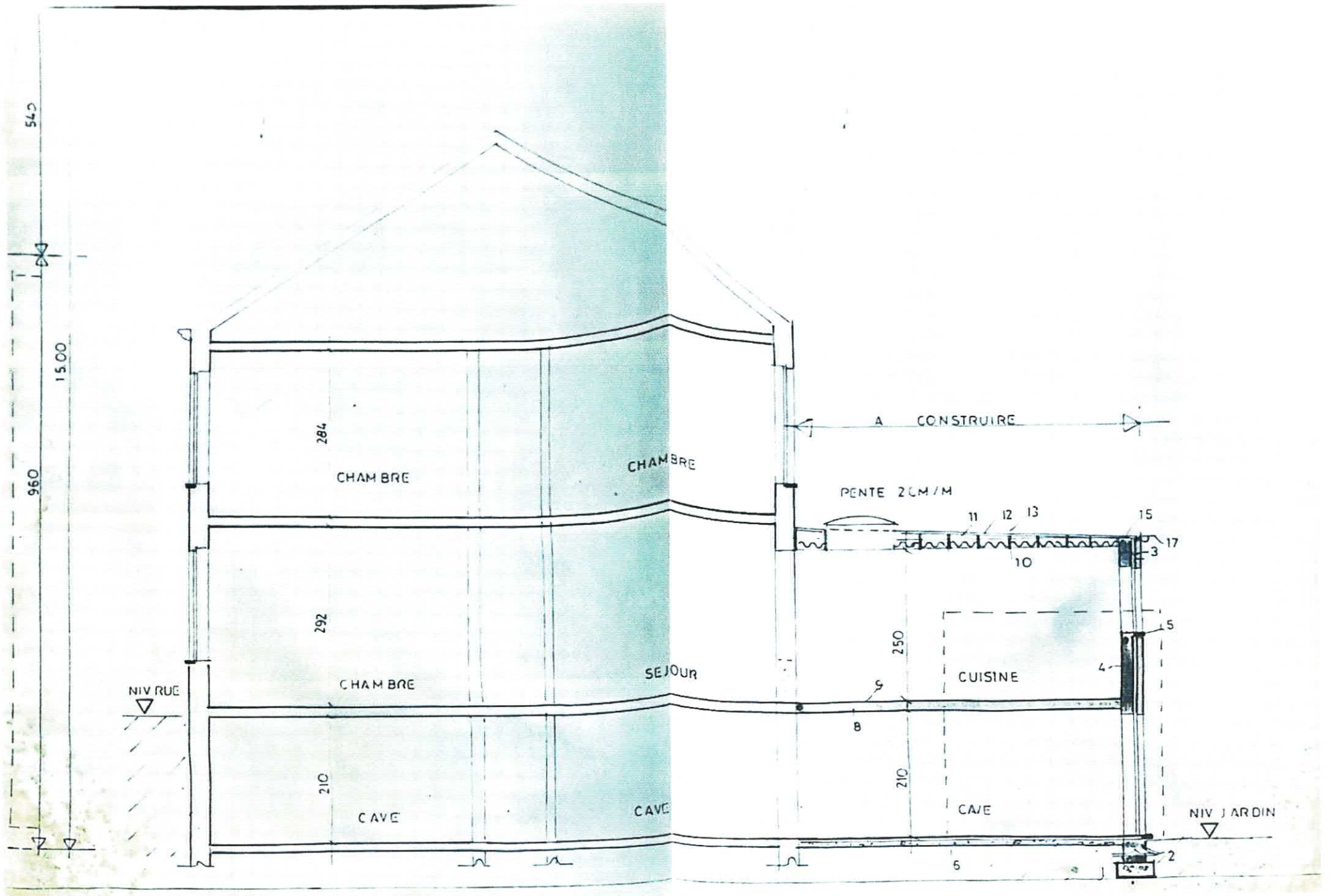
2

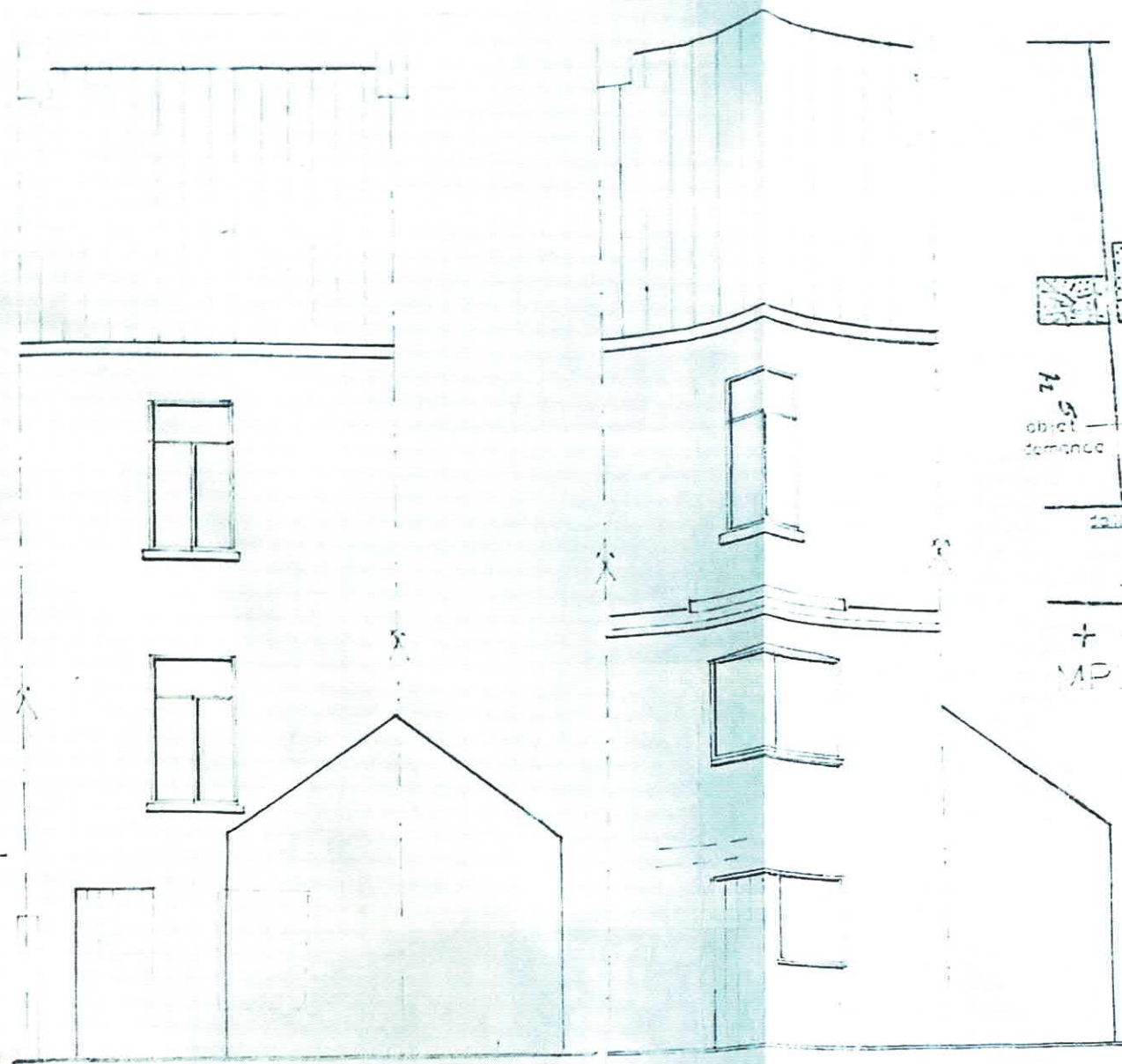
EXTRAIT CADASTRAL 1/1250



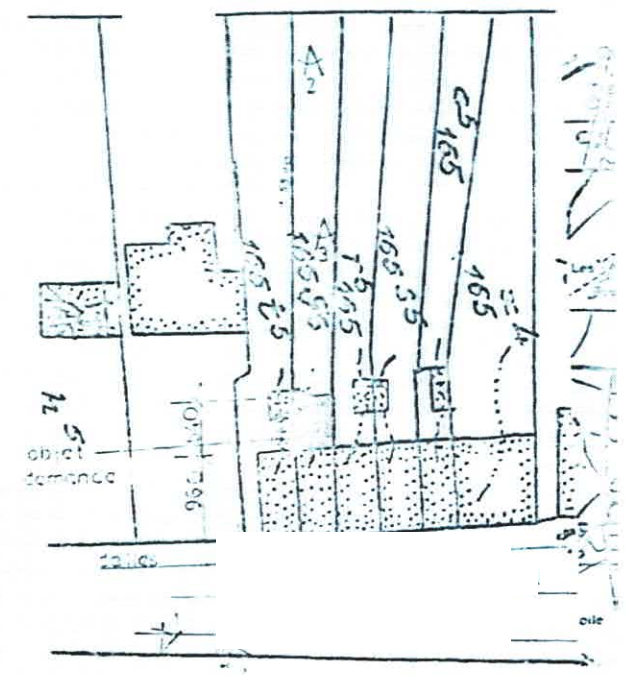
EXTRAIT CADASTRAL 1/1250







FAÇADE ARRIERE EXISTANTE ET FUTURE



MP LANTATION 1/500

voies équipées eau gaz
elec tel égouts