

# COMMUNE DE WAIMES

1ère division section H

Frédéric PECHER  
Géomètres Experts Immobilier - GEO 040274  
Av. Prof. Henrijean, 17  
4900 Spa

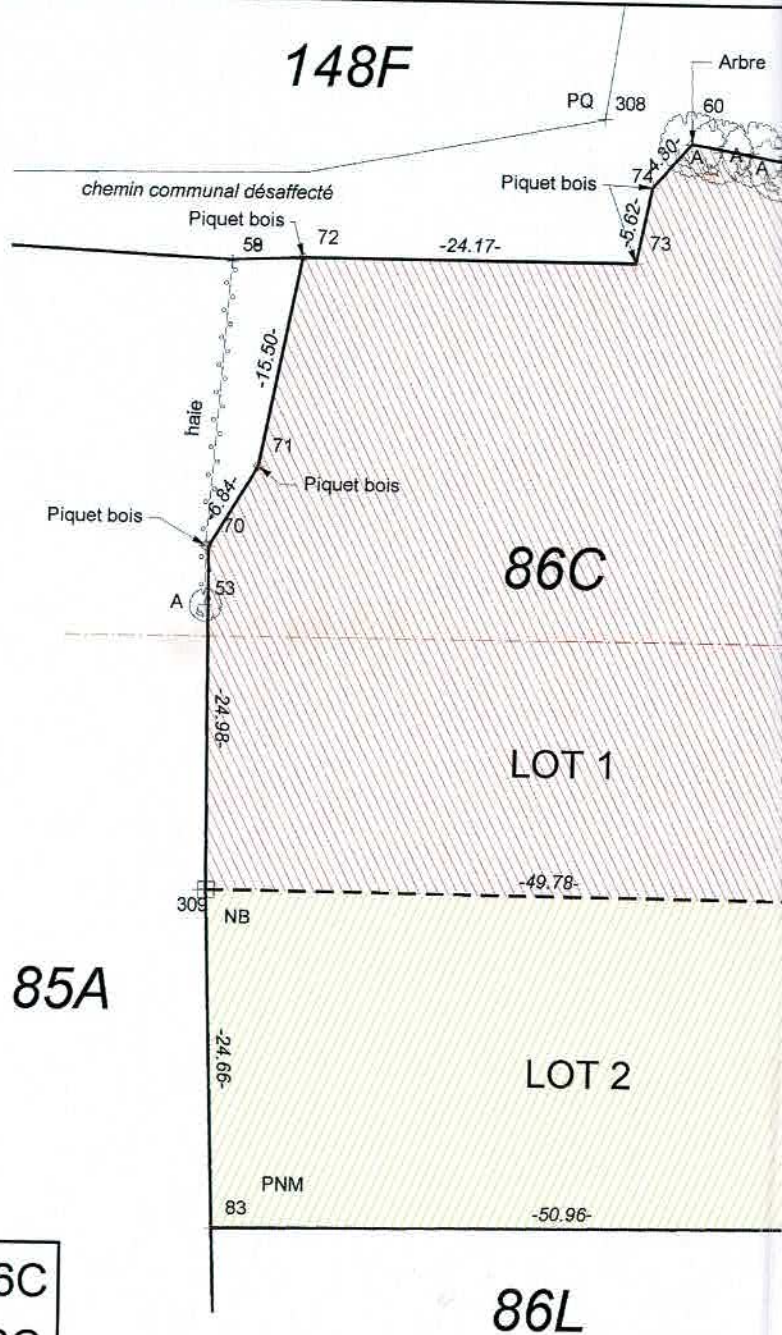
0475/72.03.36  
Dossier : 1343  
Date : 15/05/2018

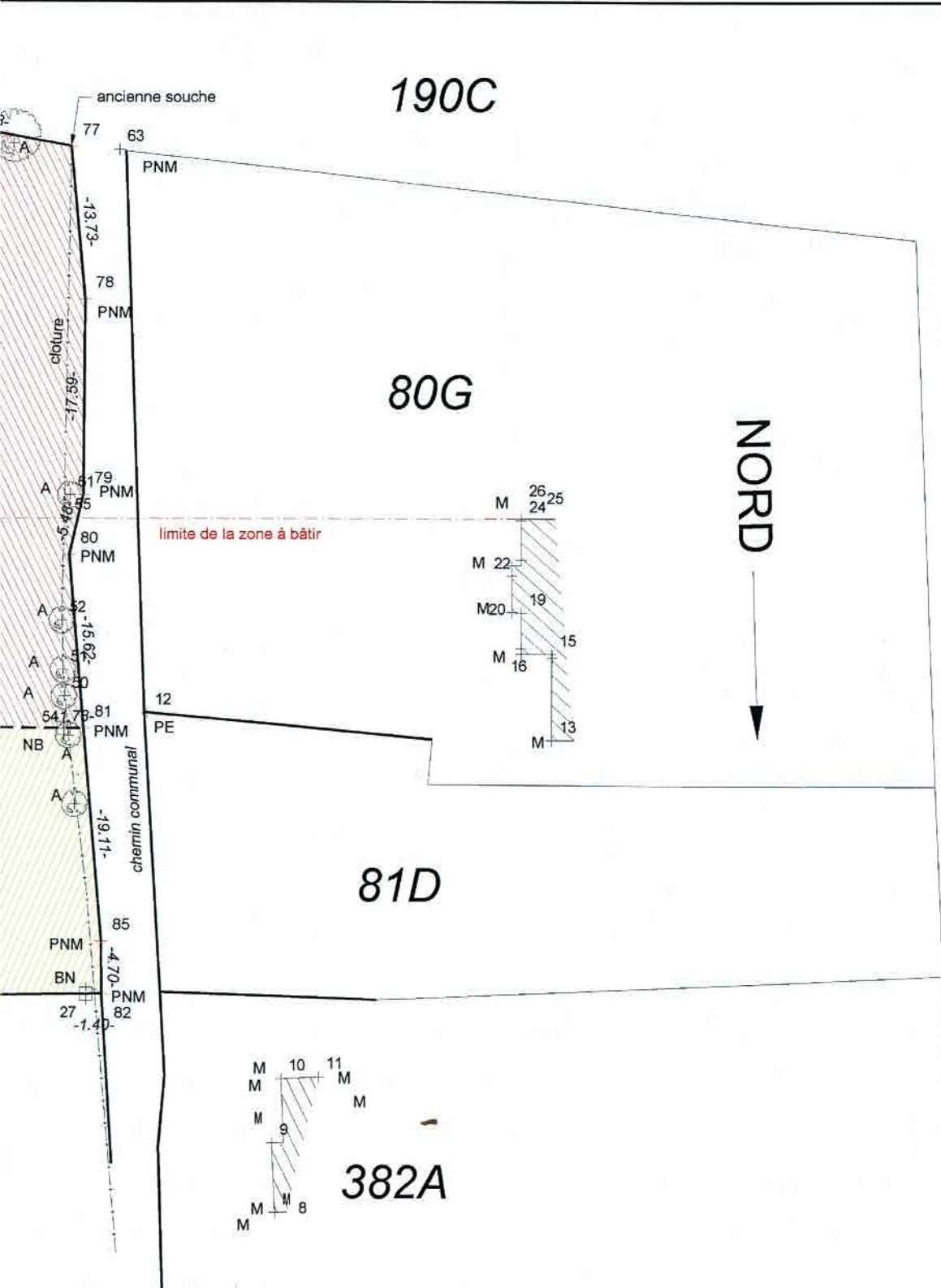
## Légendes

- NB : Nouvelle borne
- BN : Borne existante
- PNM : Point non matérialisé
- M : Bâtiment
- A : Arbre
- PQS : Piquet de signalisation
- PE : Poteau électrique
- RT : Route
- CL : Clôture
- PQ : Piquet



Lot 1 en rouge 2431 m<sup>2</sup> du nr. 86C  
Lot 2 en jaune 1261 m<sup>2</sup> du nr. 86C





NUM	X	Y
1	516.99	462.80
3	503.17	413.51
4	505.07	403.50
5	508.89	412.04
6	527.52	403.10
7	504.68	419.69
8	516.40	450.83
9	516.15	457.05
10	516.99	462.80
11	520.38	462.98
12	505.00	495.53
13	541.23	493.17
14	541.25	500.55
15	541.24	500.86
16	538.50	500.88
17	538.51	500.88
18	538.50	501.39
19	538.49	504.60
20	537.65	504.61
21	537.65	507.94
22	537.65	508.82
23	538.50	509.32
24	538.50	512.88
25	538.49	513.01
26	538.49	513.01
27	499.58	470.37
50	497.59	496.96
51	497.50	499.35
52	497.37	503.78
53	447.31	515.08
54	497.58	494.12
55	497.78	512.95
56	447.58	513.51
57	448.16	469.71
58	448.79	540.09
59	448.79	540.09
60	482.06	549.18
61	498.11	515.01
63	502.41	545.99
64	502.42	545.99
65	502.07	501.16
66	499.09	502.06
67	447.79	502.38
68	447.79	502.38
69	447.28	519.38
70	447.51	519.35
71	451.00	525.23
72	453.95	540.45
73	478.11	540.44
74	479.22	545.95
75	483.38	547.07
76	492.34	547.10
77	498.12	546.25
78	499.40	532.59
79	499.29	515.06
80	498.06	509.70
81	499.36	494.14
82	500.98	470.38
83	448.62	469.72
84	448.07	494.35
85	500.94	475.09
100	500.00	500.00
300	479.29	545.74
301	497.24	544.70
302	492.93	546.54
303	488.58	547.36
304	482.11	548.75
305	482.15	549.19
306	484.07	548.66
307	486.44	548.60
308	475.67	550.86
309	447.80	494.37
310	447.80	494.37