

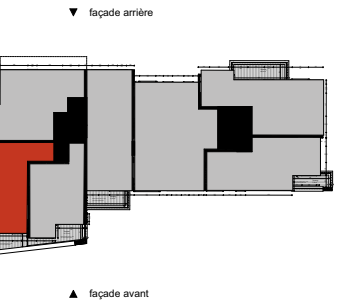
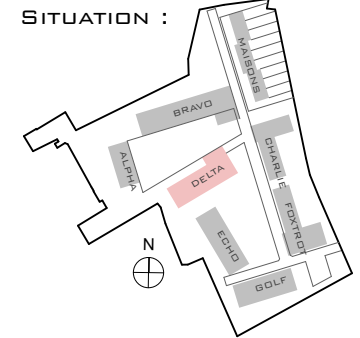
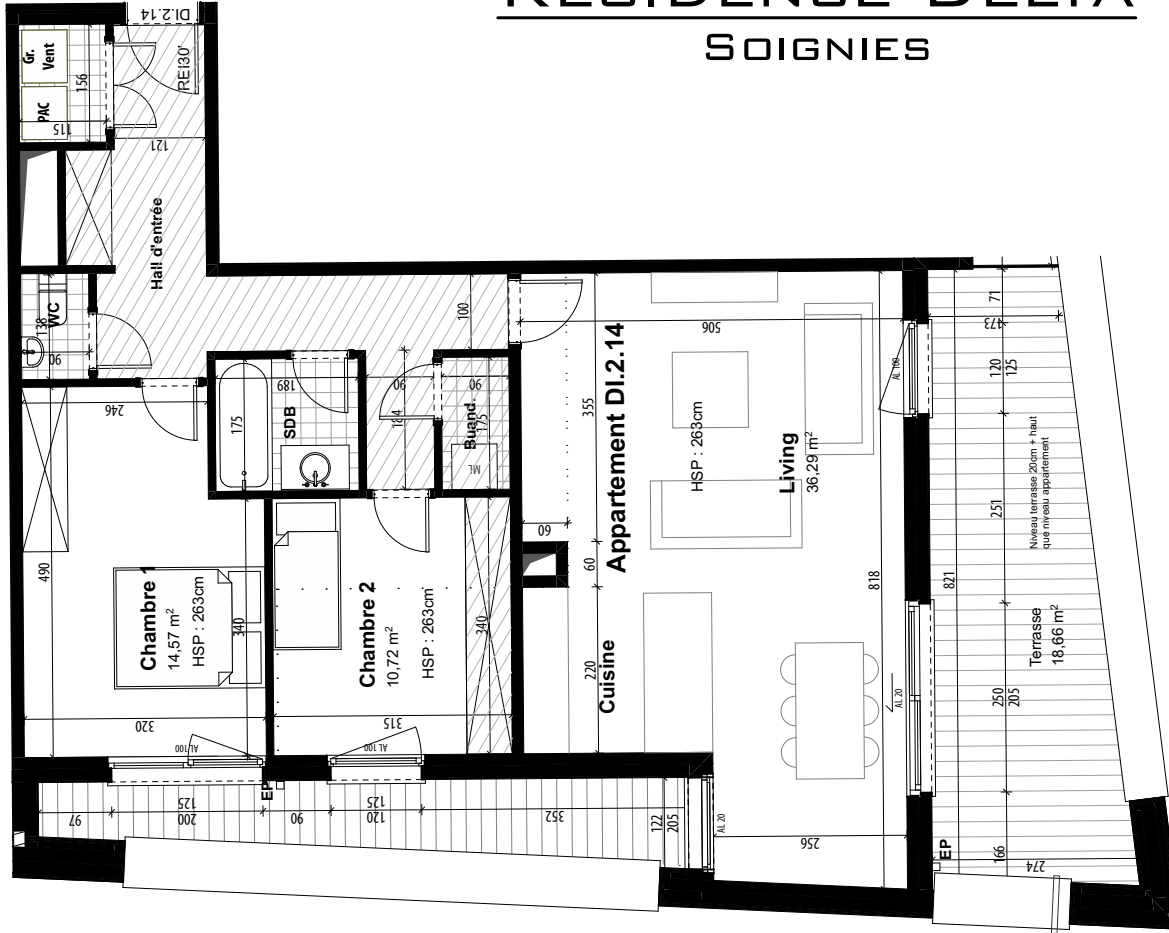
RÉSIDENCE DELTA SOIGNIES



ARBORESCENCE

APPARTEMENT D.I.2.14

SURFACE BRUTE	97,84 m ²
SÉJOUR + CUISINE	36,29 m ²
CHAMBRE 1	14,57 m ²
CHAMBRE 2	10,72 m ²
TERRASSE 1	18,66 m ²



façade avant



façade gauche

