

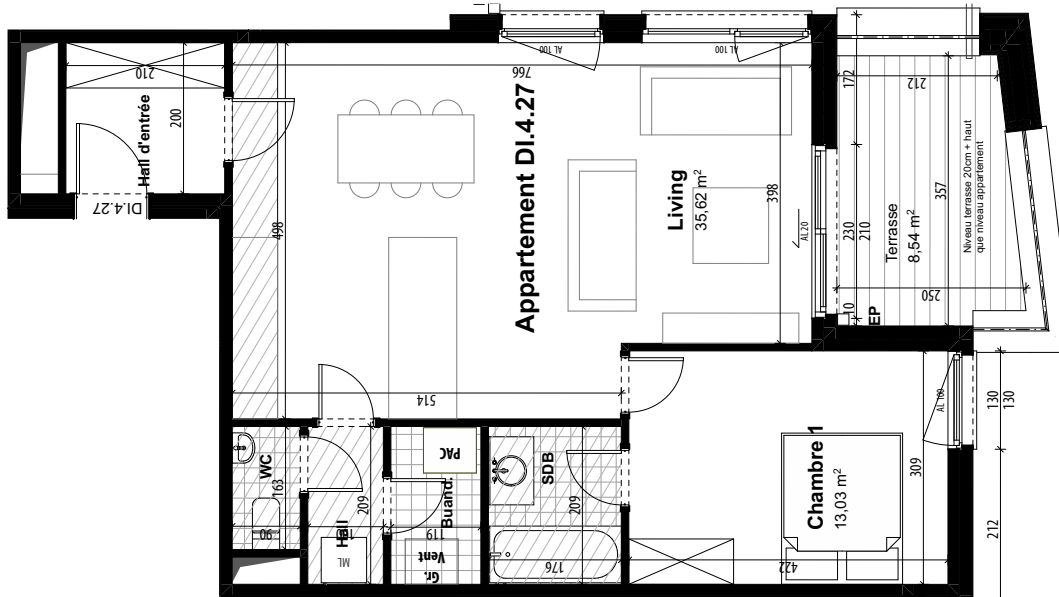
RÉSIDENCE DELTA SOIGNIES



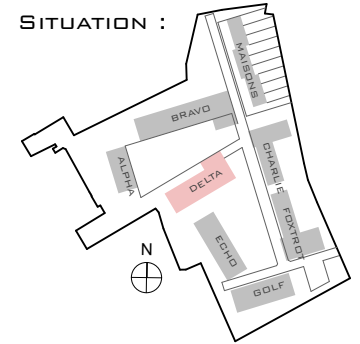
ARBORESCENCE

APPARTEMENT D.I.4.27

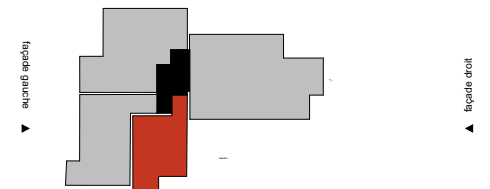
SURFACE BRUTE	74,56 M²
SÉJOUR + CUISINE	35,62 M ²
CHAMBRE 1	13,03 M ²
TERRASSE 1	8,54 M ²



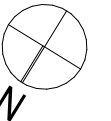
SITUATION :



▼ façade arrière



▲ façade avant



0 1 2 5M



façade avant



façade droite