



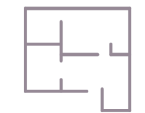

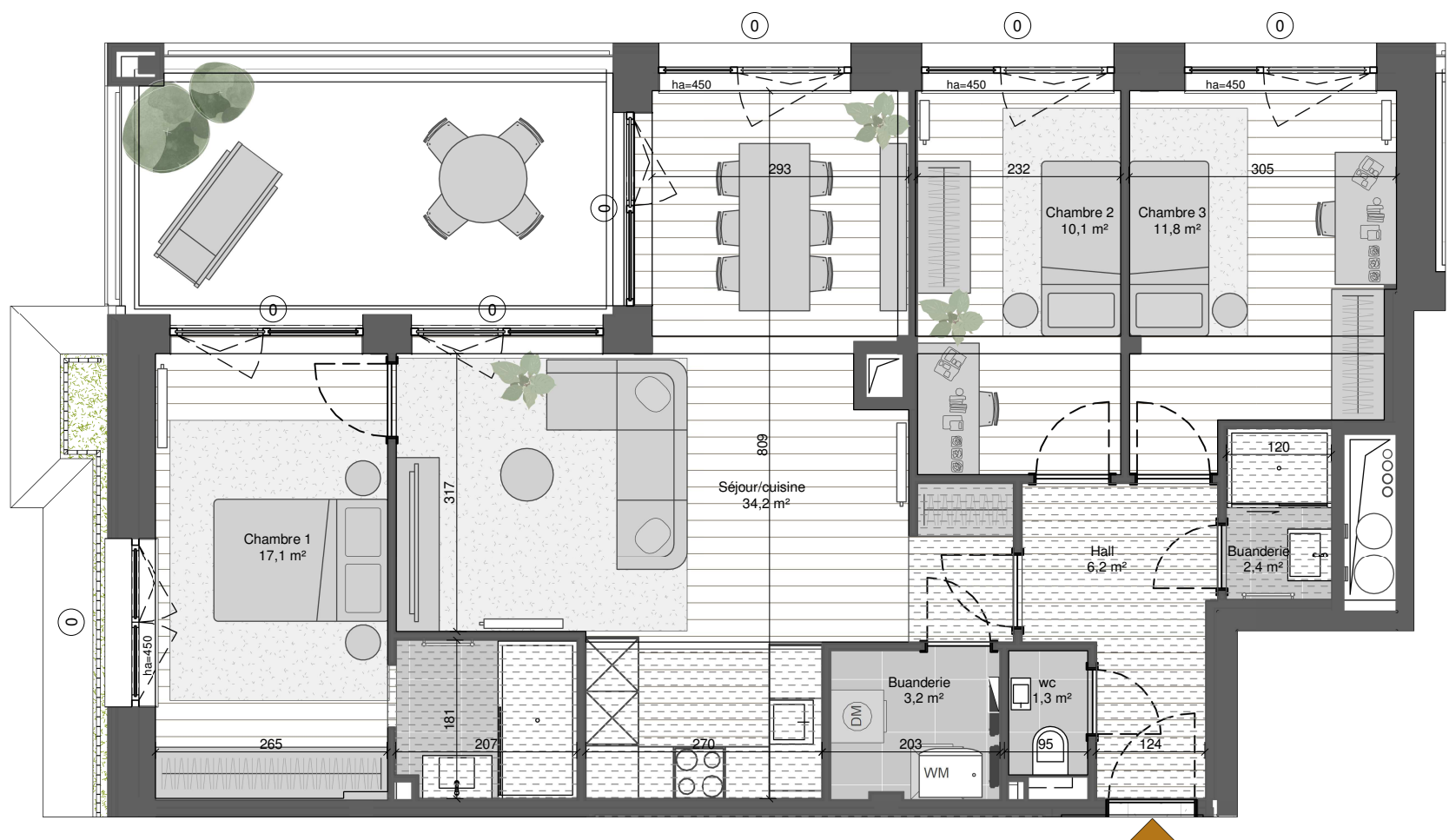
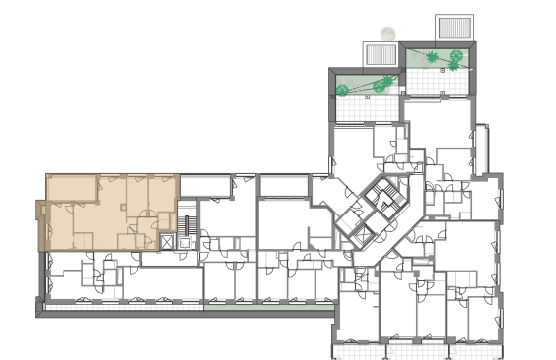



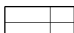




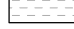

## APARTMENT A2.06.1

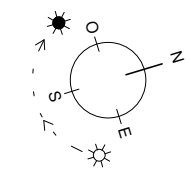
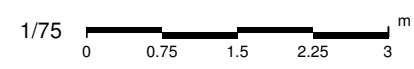
 A	 6th Floor	 3
 2	 109,3 m <sup>2</sup>	 16,7 m <sup>2</sup>

## SITUATION



### LEGEND

- |   |  |   |
|---|--|---|
|  Wood floor        |  Exterior tiled floor |  No solar shading               |
|  Tiled floor       |  Ground               |  Pre-installation solar shading |
|  Suspended ceiling |  |  Solar shading                  |



- Measurements are given on a gross basis, without finishing work. Some measurements and drawings can be subject to changes during construction.
- Each difference being more or less and within acceptable tolerances, will mean a loss of profit to the buyer without price adjustments.
- Changes may be made to this plan according to the realization requirements.

- The furniture and the flooring layout are given only as an example.
- Full information about the radiators, electrical and ventilation equipment will be provided during construction.
- The measurements of the radiators and the location of the false ceiling are given only as an exemple.

- The kitchen layout and technical equipment sizes are provided for information only and are not contractual. Specific documents can be provided during construction