



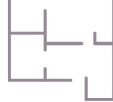

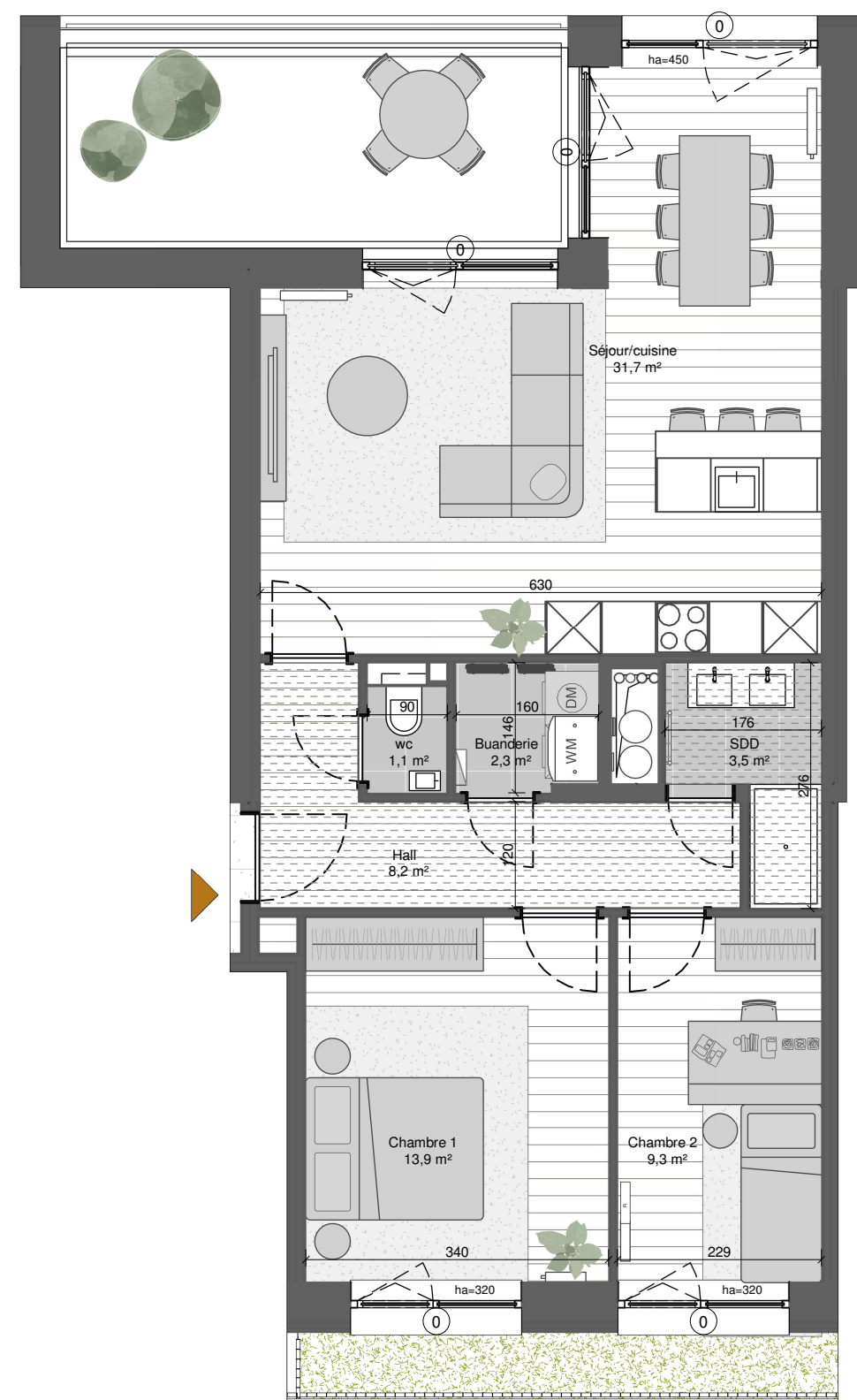
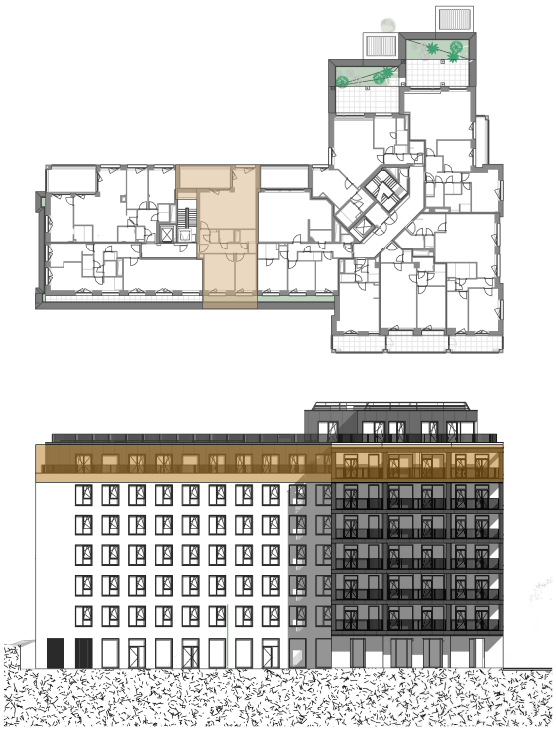


TWIN FALLS


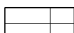
BY EAGLESTONE

APARTMENT A2.06.3

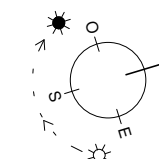
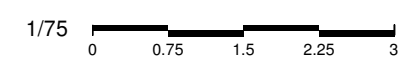
| | | |
|--|--|--|
|  A |  6th Floor |  2 |
|  1 |  87,5 m ² |  14,1 m ² |
| SITUATION | | |



LEGEND

| | |
|---|--|
|  Wood floor |  Exterior tiled floor |
|  Tiled floor |  Ground |
|  Suspended ceiling | |

- 0 No solar shading
- 1 Pre-installation solar shading
- 2 Solar shading



- Measurements are given on a gross basis, without finishing work. Some measurements and drawings can be subject to changes during construction.
- Each difference being more or less and within acceptable tolerances, will mean a loss of profit to the buyer without price adjustments.
- Changes may be made to this plan according to the realization requirements.

- The furniture and the flooring layout are given only as an example.
- Full information about the radiators, electrical and ventilation equipment will be provided during construction.
- The measurements of the radiators and the location of the false ceiling are given only as an exemple.

- The kitchen layout and technical equipment sizes are provided for information only and are not contractual. Specific documents can be provided during construction