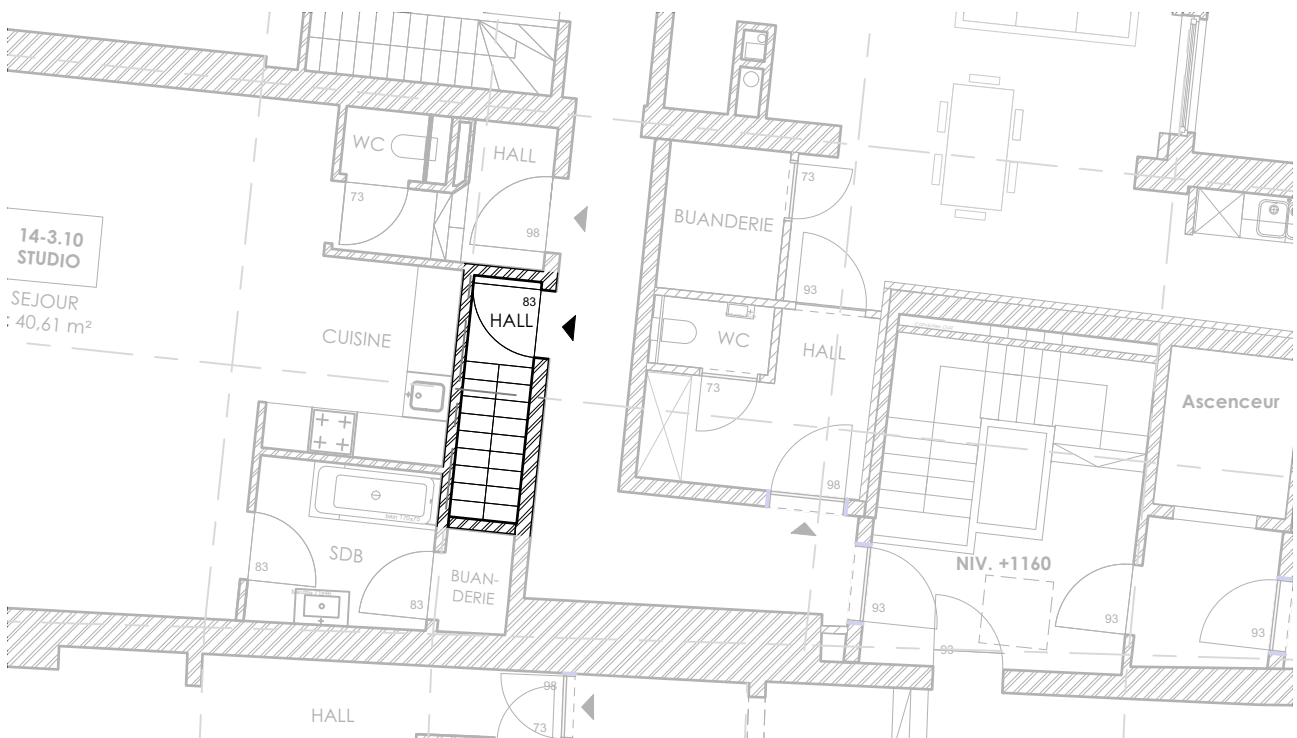
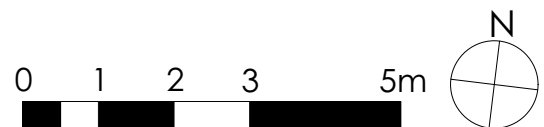


Plan du 4ème étage



Plan du 3ème étage



PROJECT : GDLA 2
Commercial Plan

 **HOMES INVEST**
BELGIUM

Date : 10/03/2022

Location :

Rue de la Monnaie, 14
5000 Namur

+4

Furniture is fictional and for illustrative purposes only.
The dimensions and configurations of the apartments are given for information only.

BOULEVARD DE LA WOLUWE/WOLUWELAAN, 46/11
1200 BRUXELLES / BRUSSEL
Tel : +32 740 14 50